

131 LOWER SANDFORD STREET, LICHFIELD, WS13 6RB

£1,200 PCM

3 1 1 C



gatewayresidential.co.uk

01702 443 546



Gateway

PROPERTY DESCRIPTION

Nestled in the charming area of Lower Sandford Street, Lichfield, this delightful detached house presents an excellent opportunity for families and individuals alike. Boasting three generously sized bedrooms, this property offers ample space for relaxation and personalisation. The well-proportioned reception room serves as a welcoming hub for entertaining guests or enjoying quiet evenings at home.

The house features a low-maintenance garden, perfect for those who appreciate outdoor space without the burden of extensive upkeep. This garden provides a lovely setting for al fresco dining or simply unwinding in the fresh air.

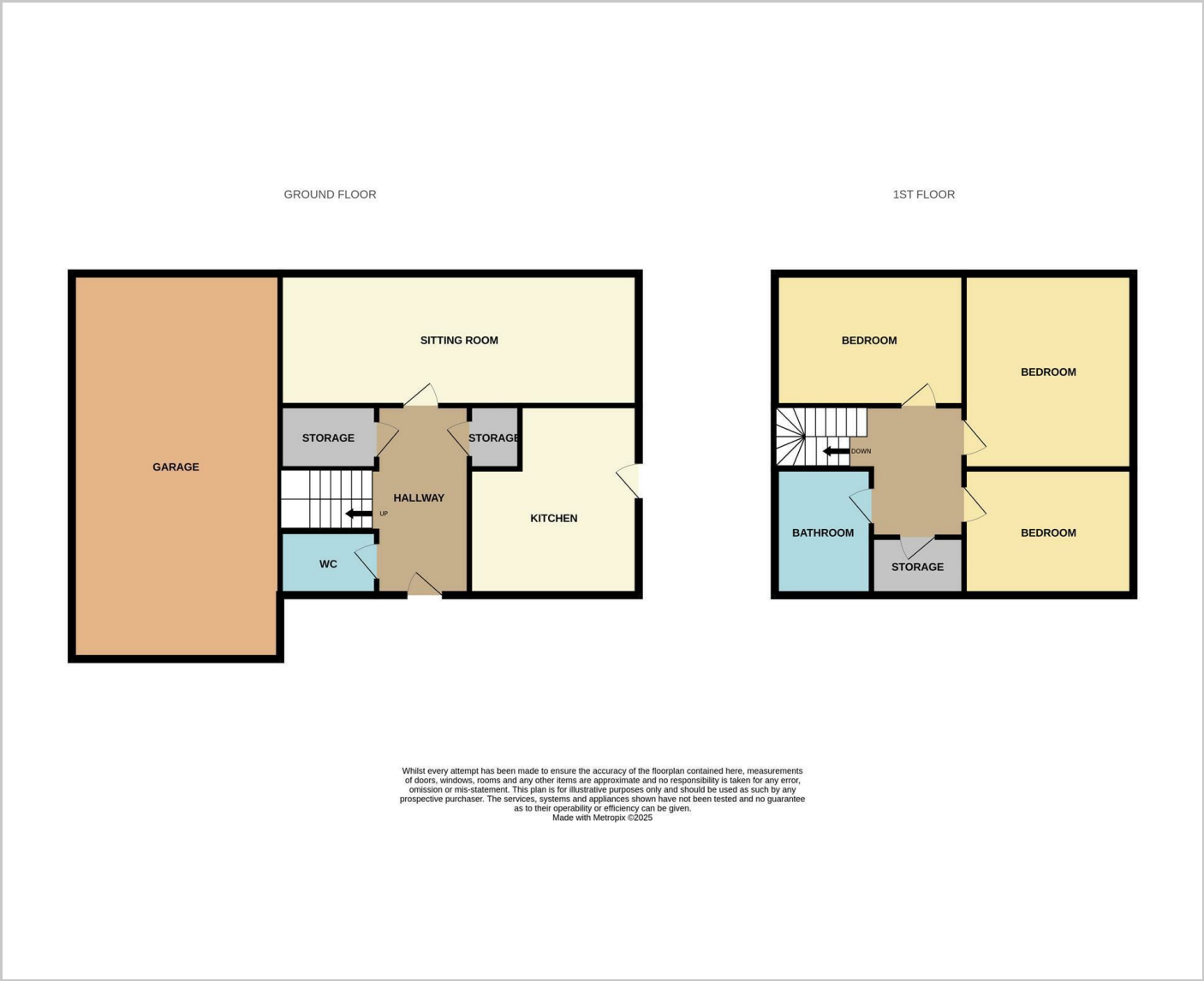
Lichfield is renowned for its rich history and vibrant community, making it an ideal location for those seeking a blend of urban convenience and suburban tranquillity. With local amenities, schools, and parks within easy reach, this property is perfectly positioned to cater to the needs of modern living.

In summary, this detached house on Lower Sandford Street is a wonderful opportunity to secure a comfortable and practical home in a sought-after area. Whether you are looking to settle down or invest, this property is sure to impress.

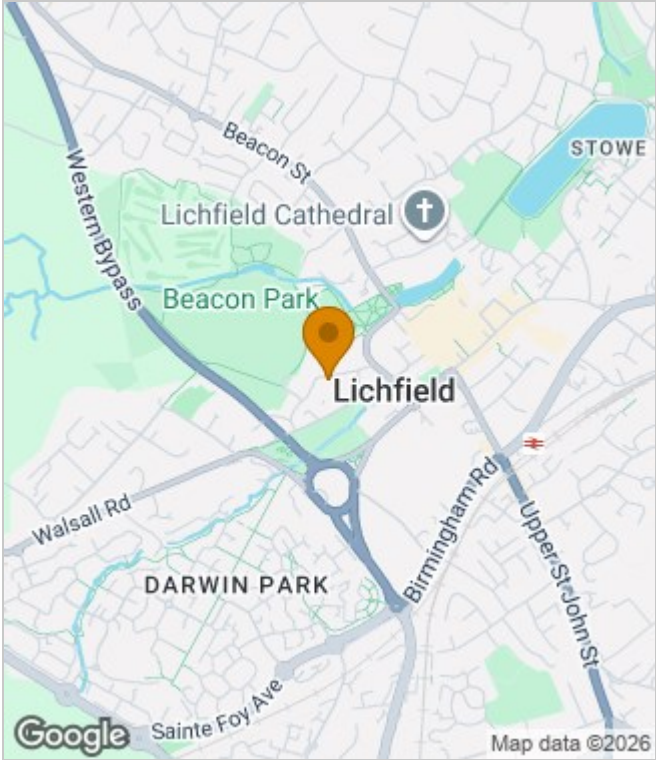




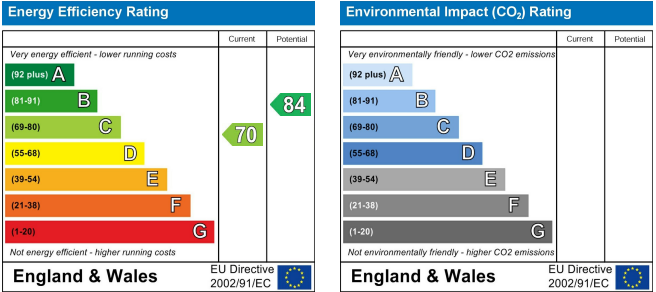
FLOOR PLANS



AREA MAP



ENERGY PERFORMANCE GRAPH



These particulars, whilst believed to be accurate are set out as a general outline only for guidance and do not constitute any part of an offer or contract. Intending purchasers should not rely on them as statements of representation of fact, but must satisfy themselves by inspection or otherwise as to their accuracy. No person in this firms employment has the authority to make or give any representation or warranty in respect of the property.