

TO LET

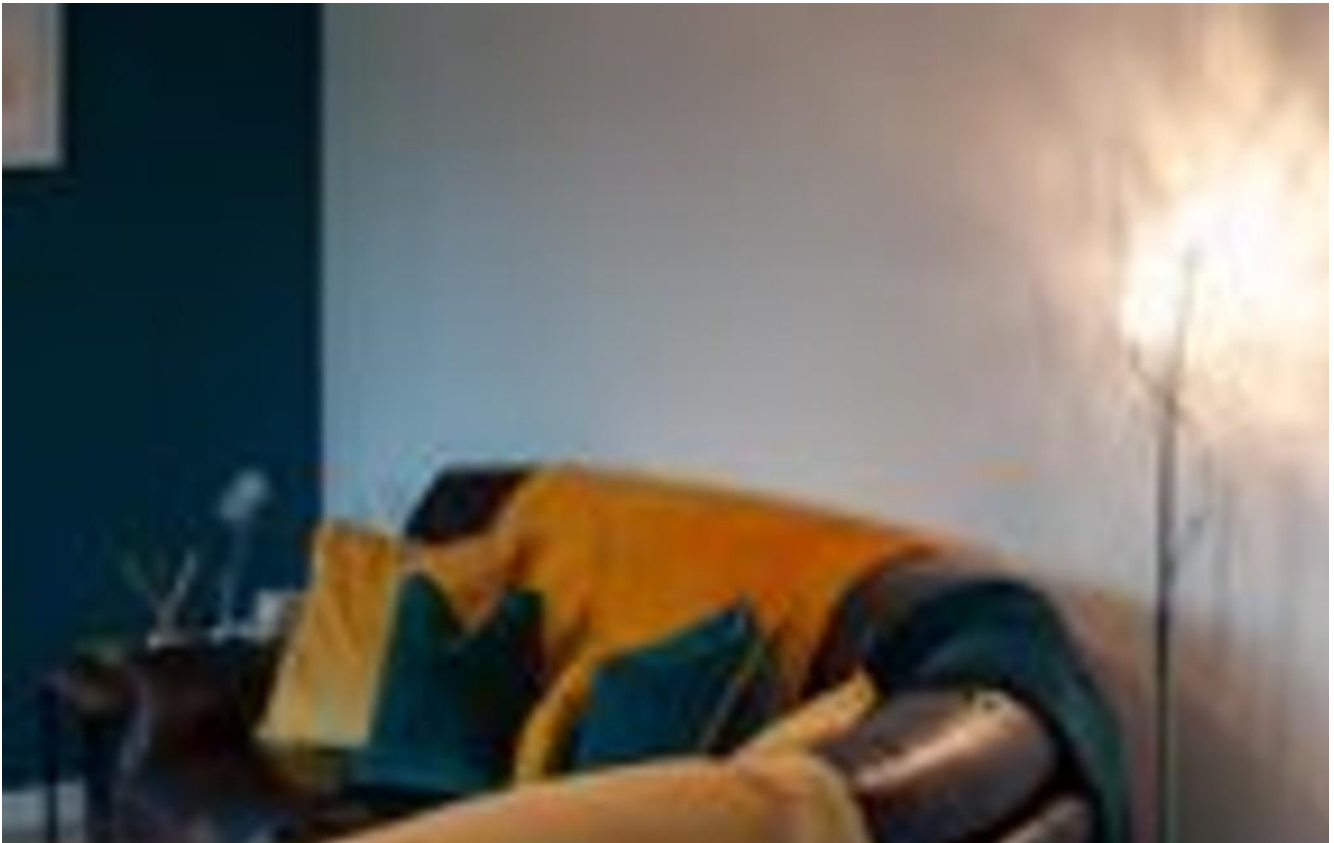


St Michaels Vale, South Tyneside

2 Bedrooms, 2 Bathroom, Flat

£550 pcm


MARTIN&CO



St Michaels Vale, South

Tyneside

2 Bedrooms, 2 Bathroom

£550 pcm

Date available: 26th November 2021

Deposit: £550

Furnished


Council Tax band: A


- MODERN APARTMENT
- TWO BEDROOM
- BEAUTIFULLY PRESENTED
- ALLOCATED PARKING BAY
- TOWN CENTRE LOCATION
- EPC RATING D
-







Energy Efficiency Rating		Current	Potential
Very energy efficient - lower running costs			
(92-100) A			
(81-91) B			
(69-80) C			
(55-68) D			
(39-54) E			
(21-38) F			
(1-20) G			
Not energy efficient - higher running costs			
		81	82
England, Scotland & Wales		EU Directive 2002/91/EC 	

Environmental Impact (CO ₂) Rating		Current	Potential
Very environmentally friendly - lower CO ₂ emissions			
(92-100) A			
(81-91) B			
(69-80) C			
(55-68) D			
(39-54) E			
(21-38) F			
(1-20) G			
Not environmentally friendly - higher CO ₂ emissions			
		86	87
England, Scotland & Wales		EU Directive 2002/91/EC 	



Martin & Co South Tyneside

22 Athenaeum Street • Sunnyside • Sunderland • SR1
1DH

T: 0191 546 1973 • E: sunderland@martinco.com

0191 546 1973

<http://www.martinco.com>



Accuracy: References to the Tenure of a Property are based on information supplied by the Seller. The Agent has not had sight of the title documents. A Buyer is advised to obtain verification from their Solicitor. Items shown in photographs including but not limited to carpets, fixtures and fittings are not included unless specifically mentioned within the sales particulars. They may however be available by separate negotiation. Buyers must check the availability of any property and make an appointment to view before embarking on any journey to see a property. No person in the employment of the agent has any authority to make any representation about the property, and accordingly any information given is entirely without responsibility on the part of the agents, sellers(s) or lessors(s). Any property particulars are not an offer or contract, nor for part of one. **Sonic / laser Tape:** Measurements taken using a sonic / laser tape measure may be subject to a small margin of error. **All Measurements:** All Measurements are Approximate. **Services Not tested:** The Agent has not tested any apparatus, equipment, fixtures and fittings or services and so cannot verify that they are in working order or fit for the purpose. A Buyer is advised to obtain verification from their Solicitor or Surveyor.