



LAWS HOUSE
Turvey, Bedfordshire

Welcome to...

LAWS HOUSE

Laws House is a luxury development of 12 properties converted from the historic Laws Hotel in the heart of Turvey, Bedfordshire.

The development offers a number of exciting property types ranging from one bedroom apartments to a two bedroom detached bungalow, with each benefitting from allocated parking and an exclusive residents garden



Location & Amenities

Famous for its stone built cottages and picturesque surroundings, Turvey boasts an array of local amenities including independent shops, two highly rated public houses serving quality food and a primary school. There are also plenty of opportunities for sports enthusiasts with cricket, football and tennis facilities located in the village.

Conveniently, Turvey is also located just 7 miles west of Bedford and 13 miles north of Milton Keynes. This means residents can live a quintessential village life and easily take advantage of nearby amenities and transport facilities.



The Three Cranes
0.1 Miles



Turvey Primary
0.2 Miles



A6
5 Miles



Bedford Station
7 Miles



Milton Keynes
13 Miles



Luton Airport
28 Miles





Specification

Kitchens

Traditional shaker-style kitchens
Breakfast island to selected plots
4 or 5 burner gas hob
3 in 1 filtered boiling hot tap
LED plinth lighting
Integrated gas fan oven & fridge-freezer
Integrated washer-dryer & dishwasher to selected plots
1.5 bowl stainless steel sinks with drainers
Glass splashbacks to hob areas

Bathroom & Ensuites

Contemporary vanity basin units
Soft closing gloss mirror cabinets
Shaver & toothbrush charging points
Thermostatic shower with overhead drencher
Quality baths with glass shower screens to selected plots
Chrome heated towel rail
Full porcelain tiling

Heating & Electrical

Gas-fired combination boiler
Wireless thermostats and radiators
LED downlighters & pendants where specified
Brushed chrome sockets and switches
USB charging sockets to bedrooms
TV points to kitchens, lounges and bedrooms

Flooring

Luxury vinyl flooring to kitchens
Quality 'Made for Britain' carpets where specified

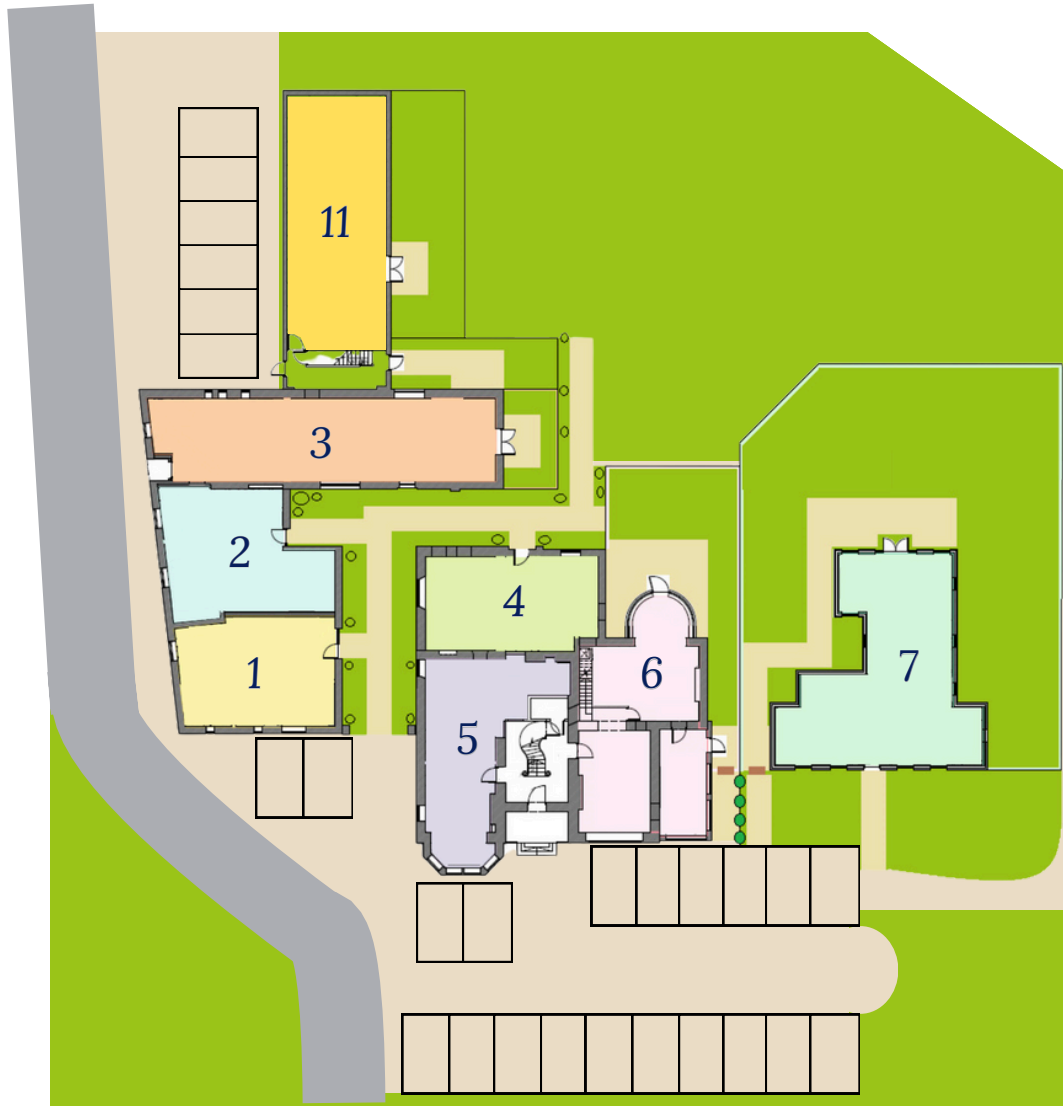
Internals

Solid timber fire-rated internal front doors
4 panel solid internal fire doors
Brushed chrome door handles
White UPVC windows with chrome lockable handles

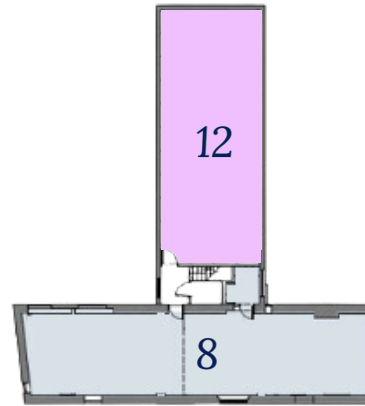
Warranty

Advantage structural defects and insurance warranty

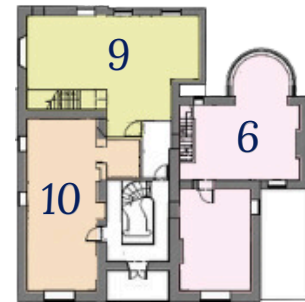
Site Plan



Ground Floor









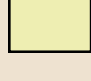





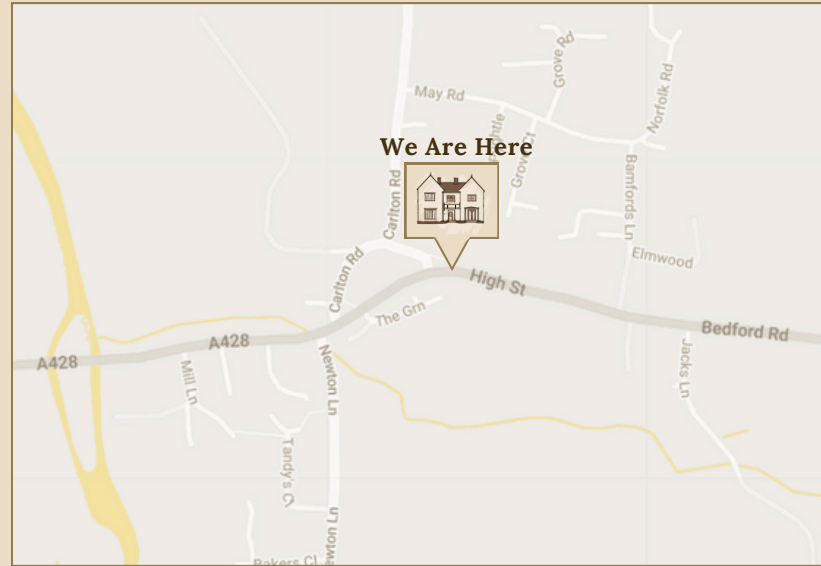
First Floor



Second Floor



-  Plot 1
1 Bedroom Apartment
-  Plot 2
2 Bedroom Apartment
-  Plot 3
2 Bedroom Apartment
-  Plot 4
1 Bedroom Apartment
-  Plot 5
1 Bedroom Apartment
-  Plot 6
2 Bedroom Duplex
-  Plot 7
2 Bedroom Bungalow
-  Plot 8
2 Bedroom Apartment
-  Plot 9
2 Bedroom Duplex
-  Plot 10
1 Bedroom Apartment
-  Plot 11
2 Bedroom Apartment
-  Plot 12
2 Bedroom Apartment



Laws House, High Street, Turvey, Bedfordshire, MK43 8DB



Contact Selling Agent:

T: 01234 302043

E: bedford@taylormadeproperties.co.uk

W: www.taylorlandandpropertygroup.co.uk

