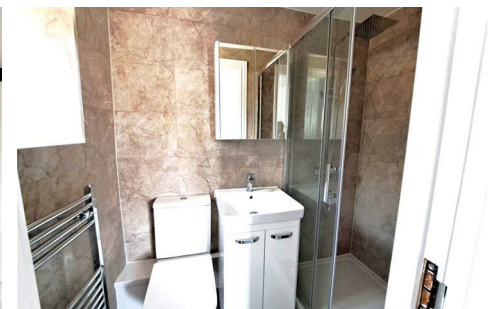




Laws Mansion, High Street, Turvey, MK43 8DB
£315,000 Leasehold



AVAILABLE NOW!

A unique opportunity to acquire this newly converted two bedroom duplex apartment forming part of the original historic Laws Hotel building in the heart of the village of Turvey. The property is accessed through the spectacular communal entrance of the main building via the sweeping staircase that takes you to the first floor at the rear of the building. The accommodation comprises of a L shaped split level entrance hall with useful recessed utility area, a feature open plan lounge/kitchen area overlooking the communal gardens and a master bedroom with ensuite shower, The second floor is accessed via a further internal staircase that leads to a double bedroom situated in the eaves of the building, leading to restricted headroom and with its own ensuite shower room. The luxury specification includes a high quality fitted kitchen with built in appliances, luxury bathroom suite and flooring included throughout. The property also benefits from two allocated parking space.

Laws Court, Turvey

Laws Court, Turvey is a luxury development of 12 properties converted for the historic Laws Hotel in the heart of Turvey. The development provides a range of property types ranging from one bedroom apartments to a two bedroom detached bungalow. All properties at Laws Court come with a minimum of one allocated parking space with provision for further visitor parking as well as access to conveniently situated communal bin and cycle stores. Many properties have private entrances and there are a number with private outside space. The remaining properties are served by a large tastefully landscaped communal garden area exclusive to the residents of Laws Court.

Entrance Hall

Open Plan Kitchen/Lounge

17'7 x 12'2 (5.36m x 3.71m)

Utility Room

()

Master Bedroom

14'1 x 9'10 (4.29m x 3.00m)

Ensuite

()

Stairs to 2nd Floor

Bedroom Two

13'8 x 15'1 (4.17m x 4.60m)

Ensuite

Communal Gardens

Allocated Parking For 2 Vehicles

Turvey

The village of Turvey is situated on the River Great Ouse in Bedfordshire on the A428 road between Bedford and Northampton, close to the Buckinghamshire border and is a mere 8 miles from the Bedford town centre and mainline train station. The village boasts two stores, one with a post office, a butcher, a village hall, a pre-school, a primary school, a Grade I listed church and two public houses; The Three Fyshes and The Three Cranes. There is a large recreation ground with a playground, sports pavilion and tennis courts. The church is a focus of the community, hosting concerts and arts events throughout the year as well as weekly services. Turvey Abbey is home to a community of Benedictine nuns. Just over 3 miles away is the Harrold Odell Country Park offering 144 acres of beauty with two picturesque lakes, river meadows and a visitors centre/cafe.

Service charge

Annual service is estimated to be no greater than £750 pa



These particulars of sale are a general outline, acting as guidance only. All descriptions, dimensions and references to condition are given without responsibility falling upon the vendors or their agents. Taylor Made New Homes Ltd has not tested any apparatus, equipment, fixtures or services. We have not sought to verify the legal title of the property, purchasers must obtain verification from their solicitor. This is offered for sale on a Subject to Contract and Without Prejudice basis 2024.



Taylor Made New Homes Limited
Taylor House, Roman Gate, Saxon Way, Great
Denham, Bedford, MK40 4FU



01234 302043



bedford@taylormadeproperties.co.uk
www.taylorlandandpropertygroup.co.uk

Company Registration: 7122033 VAT No: 158 9989 22

