



BIDWELL MEWS

HOUGHTON REGIS



The Mountford

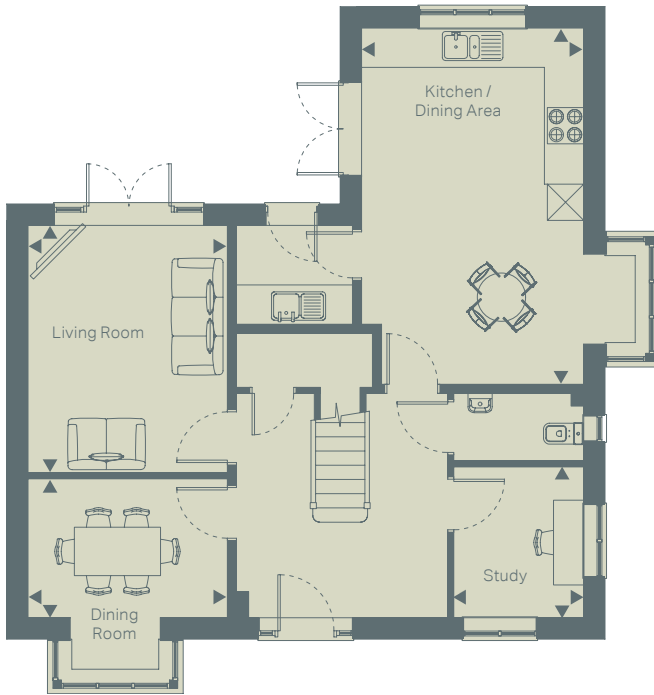
4 bedroom

Plots as drawn: 5, 32, 44 & 70
Plots handed: 13, 37, 38, 49, 72 & 80

The Mountford

4 bedroom

Plots as drawn: 5, 32, 44 & 70
Plots handed: 13, 37, 38, 49, 72 & 80



Ground Floor

Living Room
4.08m x 3.29m
13' 4" x 10' 9"

Kitchen / Dining Area
5.88m x 3.67m
19' 3" x 12' 0"

Dining Room
3.29m x 2.29m
10' 9" x 7' 6"

Study
2.49m x 2.14m
8' 2" x 7' 0"



First Floor

Bedroom 1
4.52m x 3.58m
14' 9" x 11' 8"

Bedroom 2
4.06m x 3.67m
13' 3" x 12' 0"

Bedroom 3
3.37m x 3.21m
11' 0" x 10' 6"

Bedroom 4
3.40m x 2.79m
11' 1" x 9' 1"