



**High Street, Souldrop, Bedford, MK44 1EY**  
**Guide price £425,000 Freehold**



A beautifully presented and modern 4 bedroom detached bungalow located in the sought after village of Souldrop. This stunning property offers a beautifully fitted kitchen, spacious lounge/diner with log burner, family bathroom, 4 bedrooms with an Ensuite to master, a generous enclosed rear garden and ample parking. The property is situated moments from the A6 with links to Bedford and Rushden and is within the sought after Sharnbrook school catchment.

### Lounge/Diner

20'8 x 16'6 (6.30m x 5.03m)

### Kitchen

12'10 x 6'7 (3.91m x 2.01m)

### Hallway

### Bedroom 1

16'2 x 10'3 (4.93m x 3.12m)

### Ensuite

### Bedroom 2

39'4"36'1" x 19'8"29'6" (12'11 x 6'9)

### Bedroom 3

13'3 x 8'5 (4.04m x 2.57m)

### Bedroom 4

10'2 x 6'4 (3.10m x 1.93m)

### Bathroom

### Garden

### Driveway

### Souldrop

Souldrop is a village and former civil parish, now in the parish of Knotting and Souldrop, in the Bedford district, in the ceremonial county of Bedfordshire, England, located near the border with Northamptonshire.

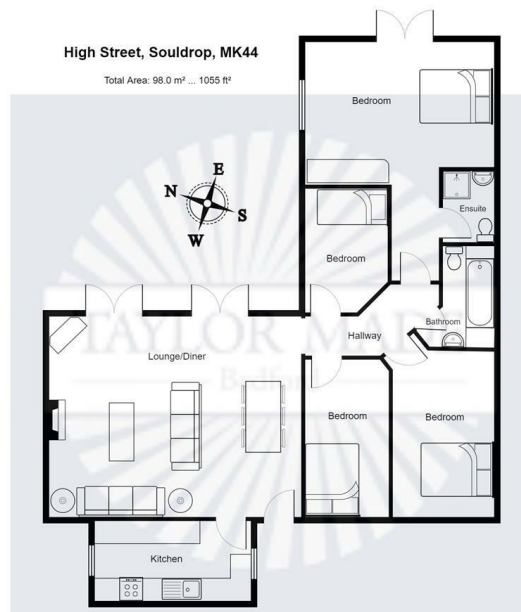
Nearby places are, Sharnbrook, Podington, Odell, Melchbourne, Yelden, Knotting, and Newton Bromswold and Rushden over the border in Northamptonshire.

The schools within the Souldrop catchment are Sharnbrook Primary and Sharnbrook Academy in Sharnbrook.

Council Tax: Bedford E



| Energy Efficiency Rating |           | Environmental Impact (CO <sub>2</sub> ) Rating |           |
|--------------------------|-----------|--|-----------|
| Current                  | Potential | Current  | Potential |
| 76                       | 64        |  |           |



Please note this floorplan is for illustrative purposes only. It is not drawn to scale and any measurements, floor areas, openings and orientations are approximate. No liability is taken for any error, omission or misstatements. A party must rely on their own inspection(s). Plan produced by Taylor Made Bedford. Powered by ZPlan.

These particulars of sale are a general outline, acting as guidance only. All descriptions, dimensions and references to condition are given without responsibility falling upon the vendors or their agents. Taylor Made Residential has not tested any apparatus, equipment, fixtures or services. We have not sought to verify the legal title of the property, purchasers must obtain verification from their solicitor. This is offered for sale on a Subject to Contract and Without Prejudice basis 2024.



Taylor Made Residential Limited  
Taylor House, Roman Gate, Saxon Way, Great Denham, Bedford, MK40 4FU



01234 302043



bedford@taylormadepropertyes.co.uk  
www.taylorlandandpropertygroup.co.uk

Company Registration: 10726223 VAT Number: 268 8165 58

