



Rhosneigr Property



Rhosneigr Property

A white semi-detached house with a dark roof and a small dormer window. The house has white walls and dark window frames. It is situated on a green lawn with a paved driveway and a blue sky in the background.

Rhosneigr Property

12 Tai Newydd, Llanfaelog, LL63 5TW

Key features

- **Exceptional detached house**
- **4 double bedrooms**
- **Extensively renovated**
- **Distant sea views**
- **2 ground floor beds & shower**
- **Spacious lounge**
- **Fabulous family dining-kitchen**
- **Utility; Large store/study**
- **2 first floor beds**
- **Bathroom + en suite**

A truly exceptional detached house offering spacious accommodation with 4 double bedrooms. With the benefit of ground floor living, sleeping and shower room facilities in addition to first floor bedrooms and bathrooms, this is a perfect residence for anyone. Located on a small development within a short walk of the local convenience store and with fabulous walks to Rhosneigr and Lake Maelog. A viewing of this beautiful property is essential to fully appreciate the extensive renovation and high quality finish that has been undertaken.

As can be seen on the floor plan, the property comprises, on the GROUND FLOOR: a spacious L-shaped hall with engineered wood flooring, cloaks area,spindled staircase and ample space for furniture; good sized lounge with log burning stove and tri-fold doors opening to the fabulous courtyard; dining-kitchen with modern two-tone finish, integral electric double oven, induction hob and dishwasher; open plan sitting area to kitchen with roof light providing ample daylight and with door to the store/study which has direct access to outside; utility room with space for a number of appliances, boiler and cupboards; 2 ground floor double bedroom and a modern shower room. On the FIRST FLOOR: 1 double bedroom with dual aspect at front and built-in wardrobe; a further double bedroom at the rear with built-in wardrobe, superb distant views to the sea and a modern en suite shower room. The delightful main bathroom includes an L-shaped bath with shower above and glass screen. There is a good sized storage cupboard off the landing.

Tai Newydd is located off Station Road which in turn is off the A4080 giving easy access to the A55 just over 3 miles away. Rhosneigr train station and the renowned beaches are only 1 mile away.

Rhosneigr Property



Rhosneigr Property

Rhosneigr Property



Rhosneigr Property

Rhosneigr Property



Rhosneigr Property

Rhosneigr Property



Rhosneigr Property

Rhosneigr Property



Rhosneigr Property

Rhosneigr Property



Rhosneigr Property

Rhosneigr Property

A bright, modern living room with white walls and a light-colored wooden floor. On the left, a grey sectional sofa is adorned with several beige and cream-colored textured cushions. Above the sofa, three small white shelves are mounted on the wall, holding decorative items like small wooden blocks and a hanging plant. A large window with black frames and white curtains dominates the center of the room, offering a view of a garden and a blue building. A large, patterned rug in shades of blue and green covers the floor. To the right, a white TV stand holds a large television, with a dark wood side table and various decorative items like vases and plants nearby. The text 'Rhosneigr Property' is overlaid in a large, blue, sans-serif font at the top and bottom of the image.

Rhosneigr Property

Rhosneigr Property

A modern living room with a grey sofa and a light blue armchair. A wooden bookshelf is filled with plants and books. A white TV stand holds a large television. A wood-burning stove is visible in the background. The room is decorated with various plants, candles, and a large rug. The text "Rhosneigr Property" is overlaid on the image.

Rhosneigr Property



Rhosneigr Property

Rhosneigr Property

Rhosneigr Property



Rhosneigr Property



Rhosneigr Property

Rhosneigr Property



Rhosneigr Property

Rhosneigr Property



Rhosneigr Property

A photograph of a bedroom. A double bed is positioned against the right wall, covered with a blue duvet featuring a large white floral pattern. The bed has a light-colored, tufted headboard. To the left of the bed, a window with white horizontal blinds is set into the wall. On the windowsill, there are several small decorative items, including a small figurine and some containers. Below the window, a white radiator is mounted on the wall. A large, white, spherical paper lantern hangs from the ceiling. The walls are a neutral, light color, and the floor is covered with a light brown carpet. The text "Rhosneigr Property" is overlaid in a large, blue, sans-serif font at the top left and bottom center of the image.

Rhosneigr Property

Rhosneigr Property



Rhosneigr Property

Rhosneigr Property

A bright, modern bedroom with a white bed, a large window with patterned curtains, a skylight, and a tall mirror. The room is well-lit and features a clean, minimalist aesthetic. The bed is covered with a white duvet and a green knitted blanket. A large window with white blinds and patterned curtains allows natural light to enter. A potted plant sits on the windowsill. A tall, narrow mirror stands against the wall, reflecting the room. A white dresser and a small table are also visible.

Rhosneigr Property

Rhosneigr Property



Rhosneigr Property

Rhosneigr Property





Rhosneigr Property

Rhosneigr Property

Rhosneigr Property

A bright, modern bedroom with a large window on the left side, offering a view of trees and a red roof. A potted plant sits on the windowsill. Below the window is a white radiator. A dark blue blanket is draped over the bottom left corner. In the center, a white desk with a white office chair is positioned against a wall. A white cabinet is built into the wall below the desk. A skylight is set into the sloped ceiling. The room has light-colored walls and carpet. The text "Rhosneigr Property" is overlaid in a large, blue, sans-serif font at the top and bottom of the image.

Rhosneigr Property

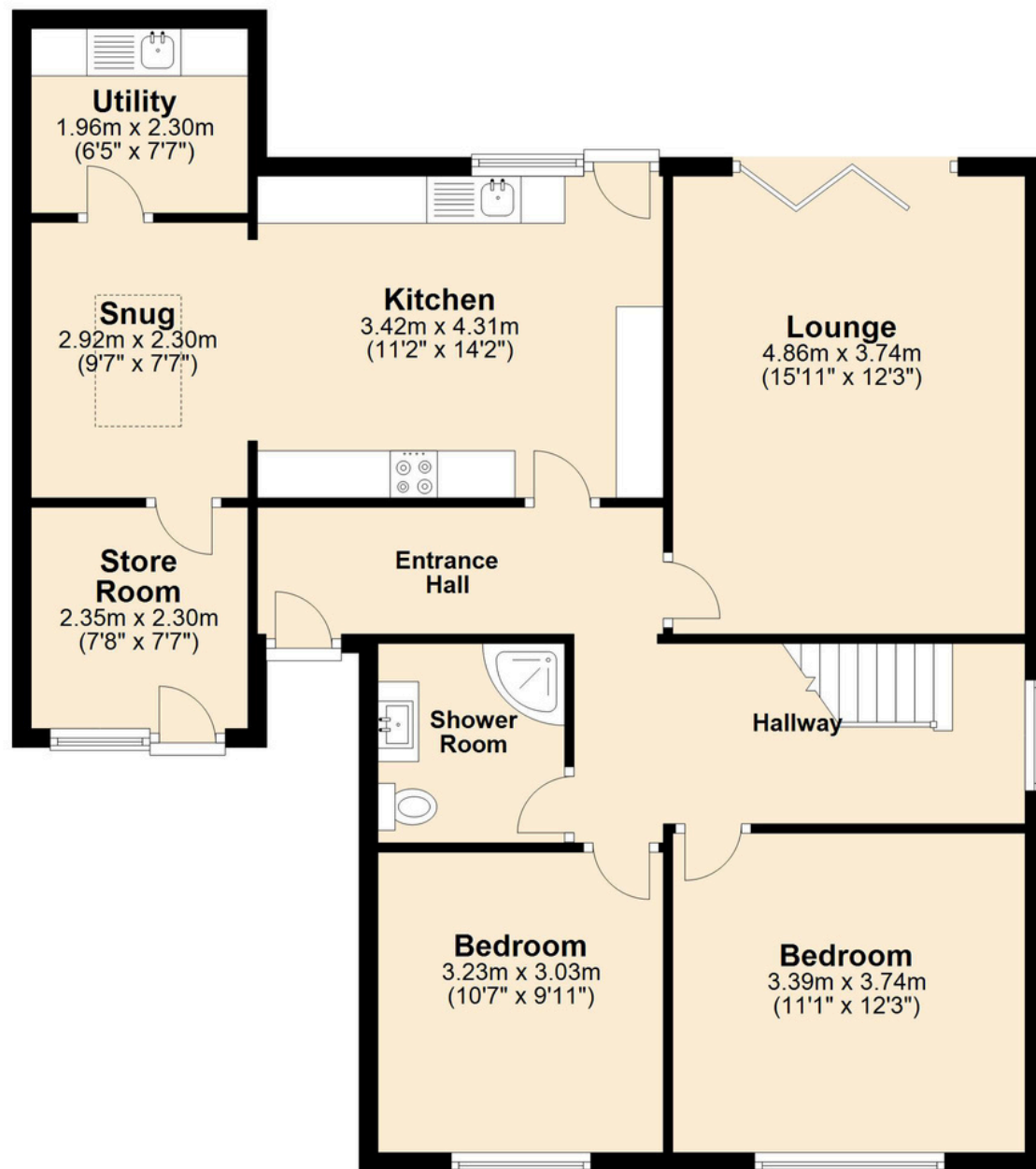
Rhosneigr Property



Rhosneigr Property

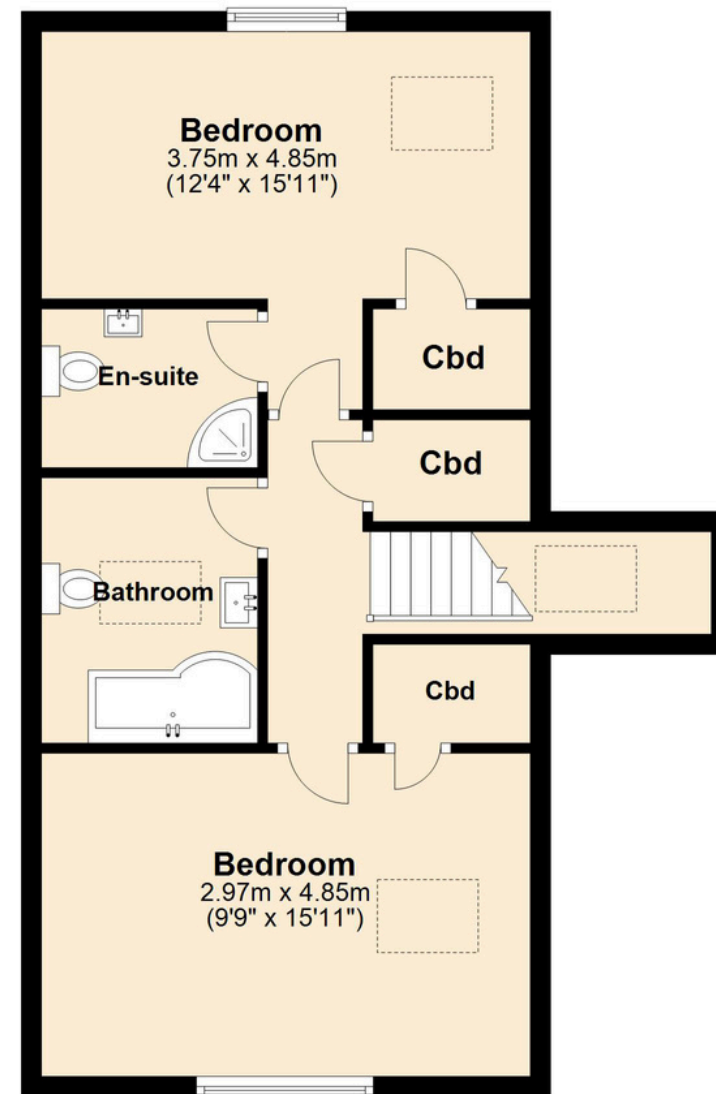
Ground Floor

Approx. 95.1 sq. metres (1024.1 sq. feet)



First Floor

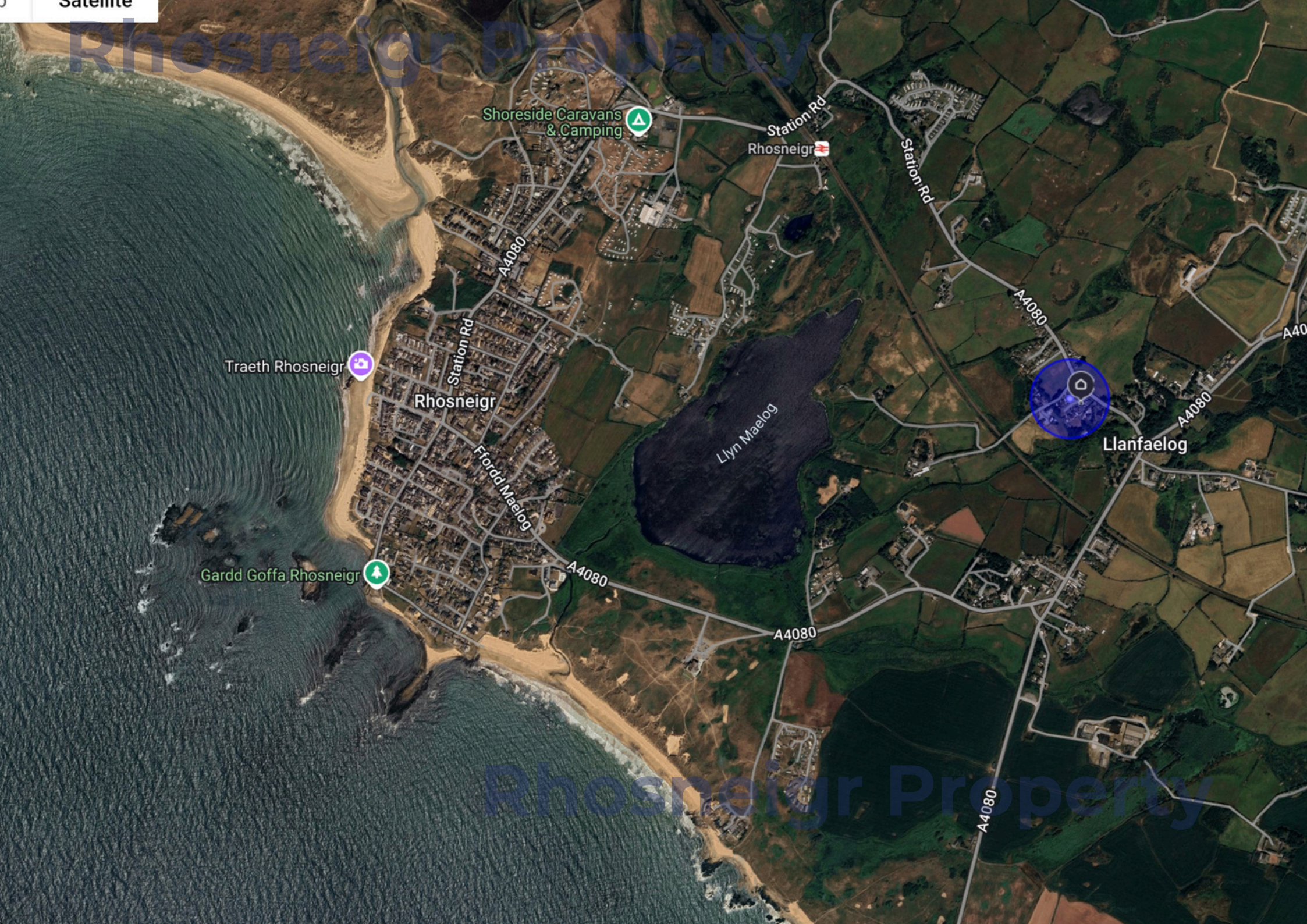
Approx. 51.1 sq. metres (550.2 sq. feet)



Total area: approx. 146.3 sq. metres (1574.4 sq. feet)

This floor plan is for illustrative purposes only and may not be representative of the property. The measurements are approximate and are for illustrative purposes only.

Plan produced using PlanUp.



Shoreside Caravans & Camping

Station Rd
Rhosneigr

Traeth Rhosneigr

Rhosneigr

Ffordd Maelog

Gardd Goffa Rhosneigr

Llyn Maelog

Llanfaelog