





The Waterfront, Rhosneigr, Anglesey - £650,000

 **Rhosneigr Property**
RHOSNEIGR'S LOCAL ESTATE AGENT

Key Features

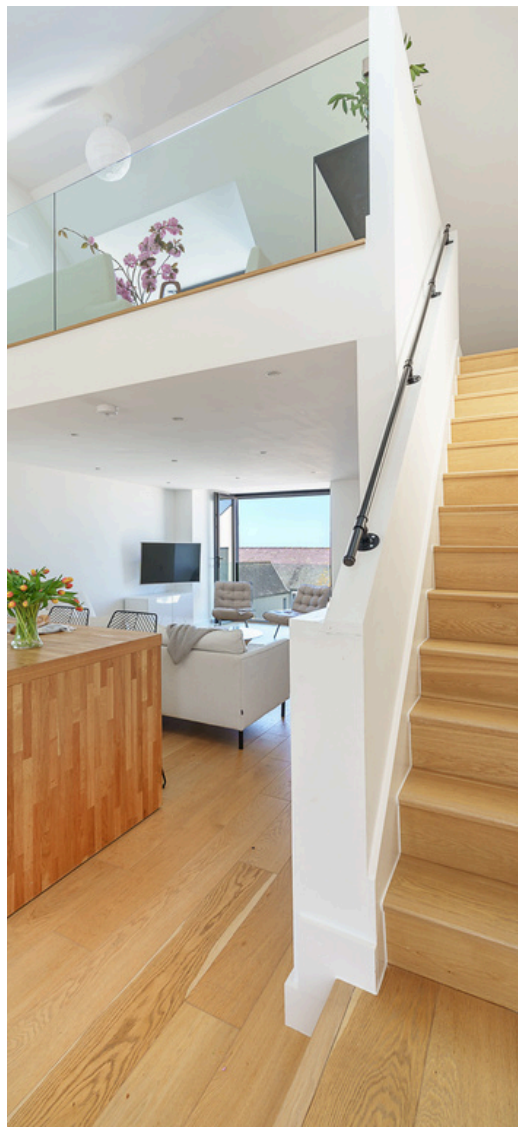
- Stunning Sea views
- Open plan Living 4 bedrooms
- Superior Finish
- State of the art technology
- Exclusive development
- Integral Garage and 1 secured parking space
- EPC: C

This is a rare opportunity to acquire the largest property on an exclusive development in the ever popular village of Rhosneigr situated on the South West coast of the stunning Isle of Anglesey. Located within a stone's throw of the beach and with one of the best sea views in the village together with a huge shared garden area rolling down to the beach. Boasting open plan living space making the most of the outlook and evening sun, it is finished to exacting standards throughout, together with state of the art heating, ventilation and entertainment systems.

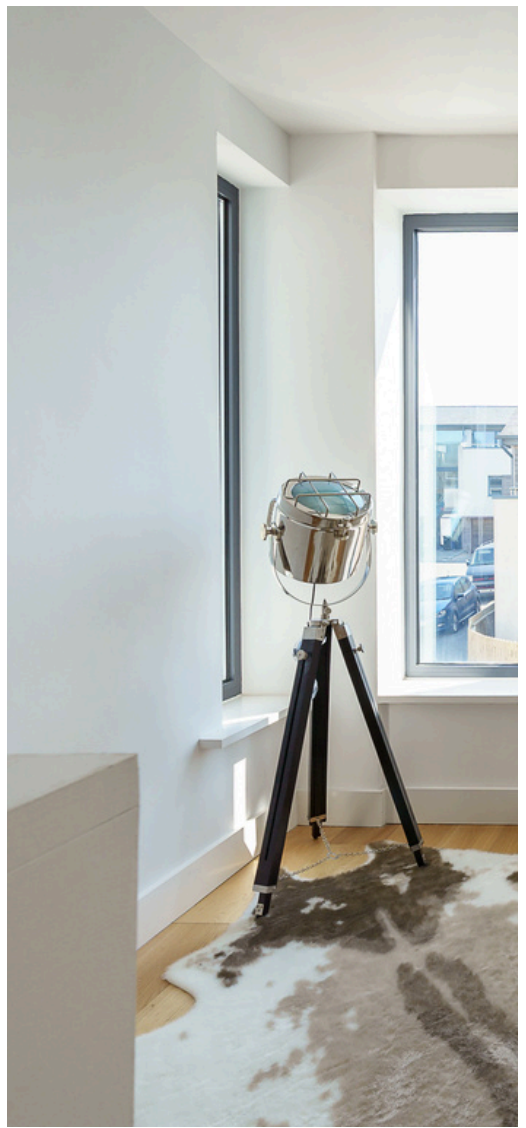








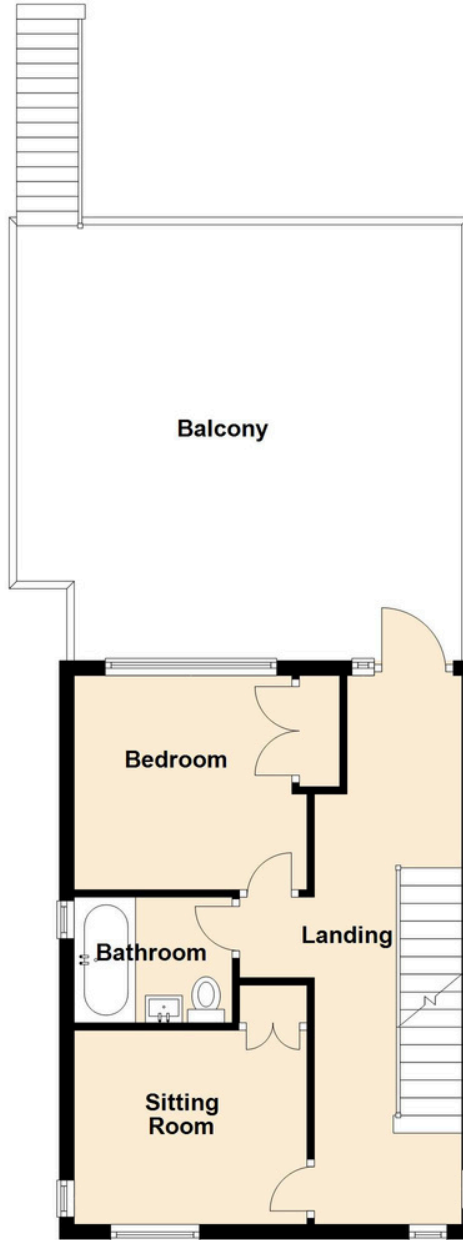






First Floor

Approx. 39.0 sq. metres (419.5 sq. feet)



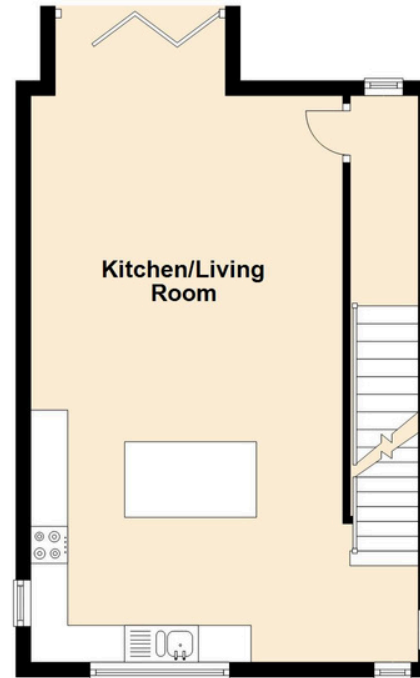
Ground Floor

Approx. 56.4 sq. metres (606.8 sq. feet)



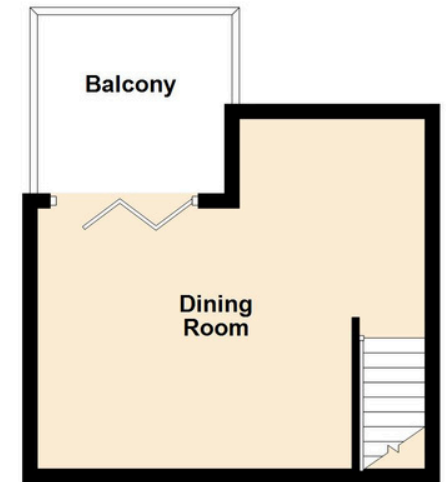
Second Floor

Approx. 42.6 sq. metres (458.2 sq. feet)



Third Floor

Approx. 21.5 sq. metres (231.9 sq. feet)



Total area: approx. 159.5 sq. metres (1716.4 sq. feet)

This floor plan is for illustrative purposes only and may not be representative of the property. The measurements are approximate and are for illustrative purposes only. Plan produced using PlanUp.

