
**BE PART OF ONE
OF LONDON'S
MOST VIBRANT
NEW COMMUNITIES**

PHASE 4 DEVELOPMENT LAYOUT



CONTENTS

CRITERIUM HOUSE 1, 2 & 3 BEDROOM APARTMENTS	P 6
TRIATHLON POINT 1, 2 & 3 BEDROOM APARTMENTS	P 20
AUDAX HEIGHTS 1, 2 & 3 BEDROOM APARTMENTS	P 38

- CRITERIUM HOUSE**
PLOTS 720-774
- TRIATHLON POINT**
PLOTS 775-837
- AUDAX HEIGHTS**
PLOTS 838-880
- COMMERCIAL SPACE**

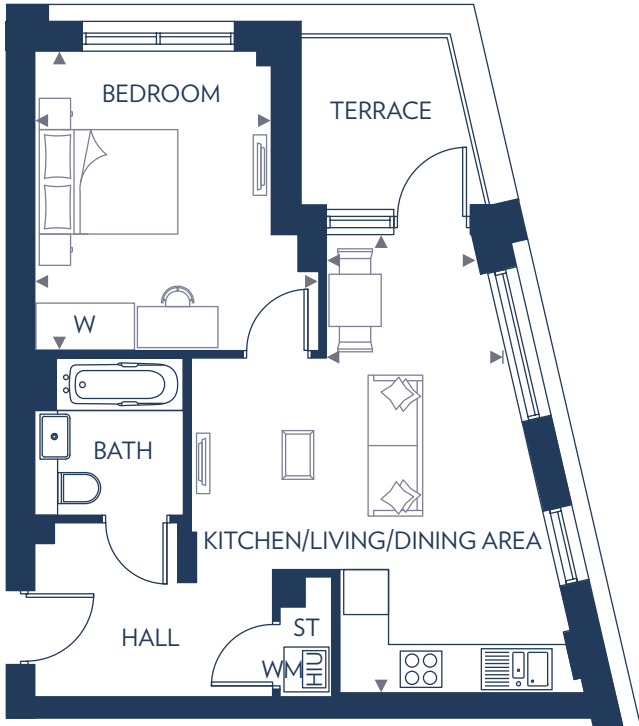
Development layout is indicative only and is subject to change. It is provided for general guidance only, it does not form the whole or any part of an offer or contract.



CRITERIUM HOUSE



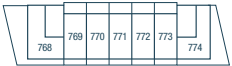
1 BEDROOM APARTMENT
PLOTS 737, 747, 757 & 767



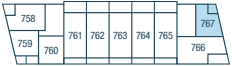
Kitchen/Living/Dining Area
6.10m x 2.41m (max) 1.93m (min) 20'0" x 7'11" (max) 6'4" (min)

Bedroom
4.00m x 3.81m (max) 3.17m (min) 13'1" x 12'6" (max) 10'5" (min)

HIU – Heat Interface Unit
ST – Store
W – Wardrobe
WM – Washing Machine



Fifth Floor



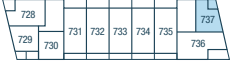
Fourth Floor



Third Floor



Second Floor



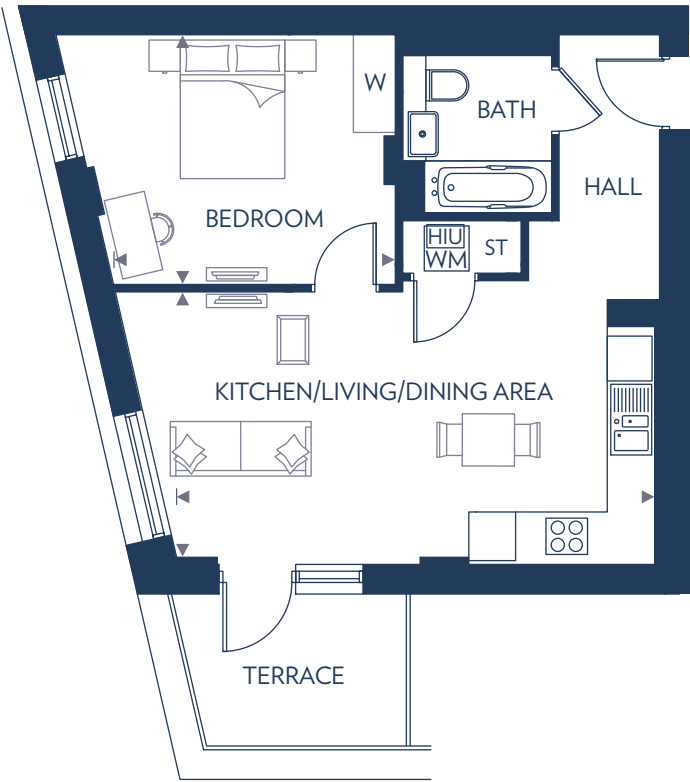
First Floor



Ground Floor

These floor plans are indicative only and depict a typical layout. The dimensions and layouts have been taken from the planning drawings issued, however the dimensions are subject to change following the issue of working drawings. Furniture is used to indicate positioning only. For exact plot specification, details of external and internal finishes, dimensions and floor plan differences consult your sales executive. All dimensions are + or – 100mm and floor plans are not shown to scale.

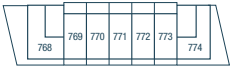
1 BEDROOM APARTMENT
PLOTS 729, 739, 749 & 759



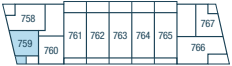
Kitchen/Living/Dining Area
6.37m x 3.64m 20'11" x 11'11"

Bedroom
3.76m x 3.33m 12'4" x 10'11"

HIU – Heat Interface Unit
ST – Store
W – Wardrobe
WM – Washing Machine



Fifth Floor



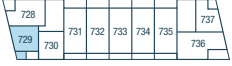
Fourth Floor



Third Floor



Second Floor



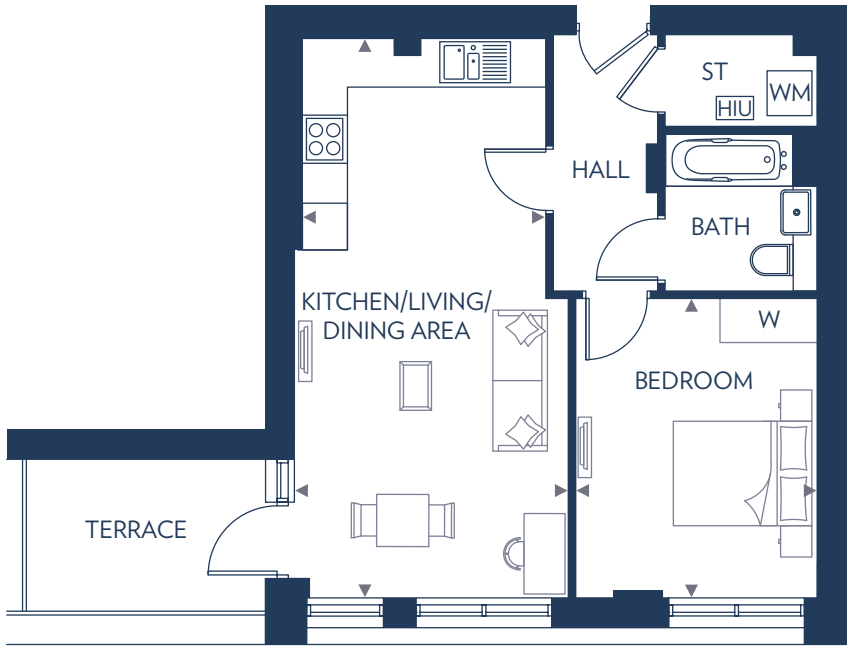
First Floor



Ground Floor

These floor plans are indicative only and depict a typical layout. The dimensions and layouts have been taken from the planning drawings issued, however the dimensions are subject to change following the issue of working drawings. Furniture is used to indicate positioning only. For exact plot specification, details of external and internal finishes, dimensions and floor plan differences consult your sales executive. All dimensions are + or – 100mm and floor plans are not shown to scale.

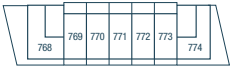
1 BEDROOM APARTMENT
PLOTS 730, 740, 750 & 760



Kitchen/Living/Dining Area
7.45m x 3.65m (max) 3.28m (min) 24'5" x 11'11" (max) 10'9" (min)

Bedroom
4.00m x 3.20m 13'1" x 10'6"

HIU – Heat Interface Unit
ST – Store
W – Wardrobe
WM – Washing Machine



Fifth Floor



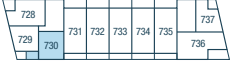
Fourth Floor



Third Floor



Second Floor



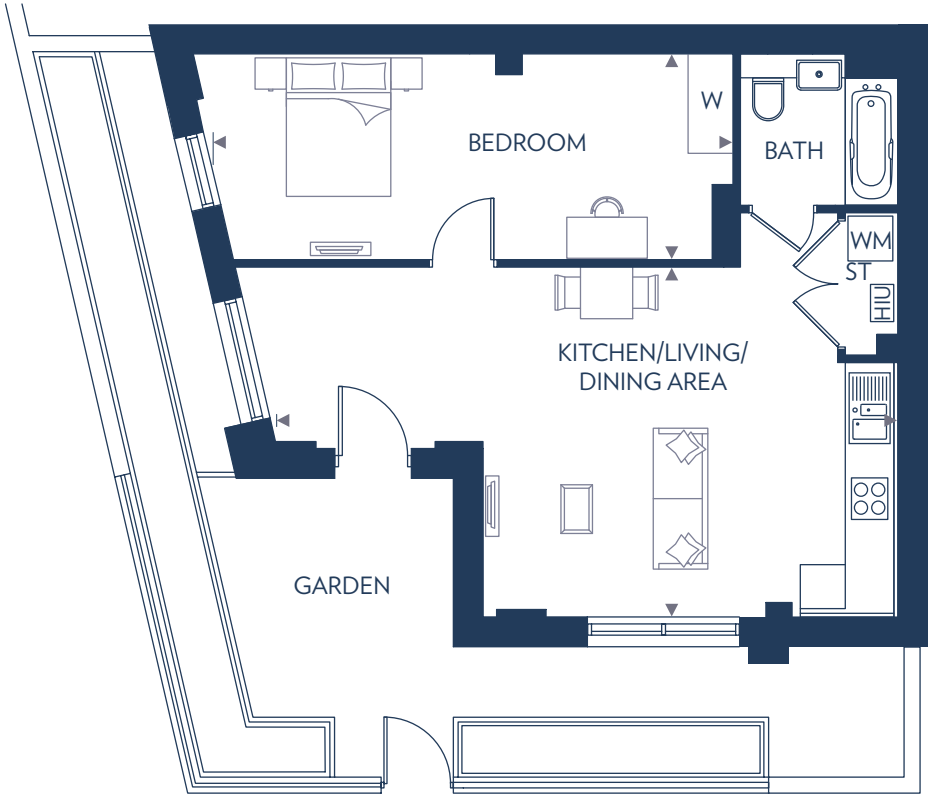
First Floor



Ground Floor

These floor plans are indicative only and depict a typical layout. The dimensions and layouts have been taken from the planning drawings issued, however the dimensions are subject to change following the issue of working drawings. Furniture is used to indicate positioning only. For exact plot specification, details of external and internal finishes, dimensions and floor plan differences consult your sales executive. All dimensions are + or – 100mm and floor plans are not shown to scale.

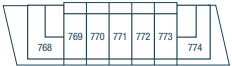
1 BEDROOM APARTMENT
PLOT 721



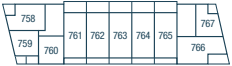
Kitchen/Living/Dining Area
5.46m x 4.67m 17'11" x 15'4"

Bedroom
6.99m x 2.75m 22'11" x 9'0"

HIU – Heat Interface Unit
ST – Store
W – Wardrobe
WM – Washing Machine



Fifth Floor



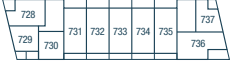
Fourth Floor



Third Floor



Second Floor



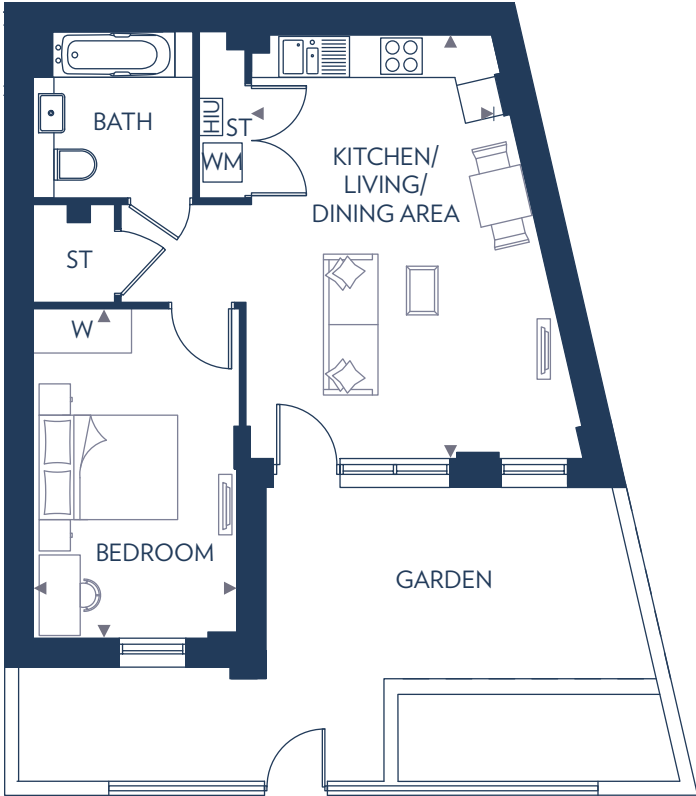
First Floor



Ground Floor

These floor plans are indicative only and depict a typical layout. The dimensions and layouts have been taken from the planning drawings issued, however the dimensions are subject to change following the issue of working drawings. Furniture is used to indicate positioning only. For exact plot specification, details of external and internal finishes, dimensions and floor plan differences consult your sales executive. All dimensions are + or – 100mm and floor plans are not shown to scale.

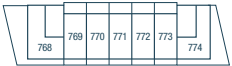
1 BEDROOM APARTMENT
PLOT 727



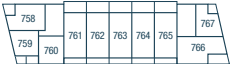
Kitchen/Living/Dining Area
6.47m x 3.67m 21'2" x 12'0"

Bedroom
5.05m x 3.17m 16'6" x 10'5"

HIU – Heat Interface Unit
ST – Store
W – Wardrobe
WM – Washing Machine



Fifth Floor



Fourth Floor



Third Floor



Second Floor

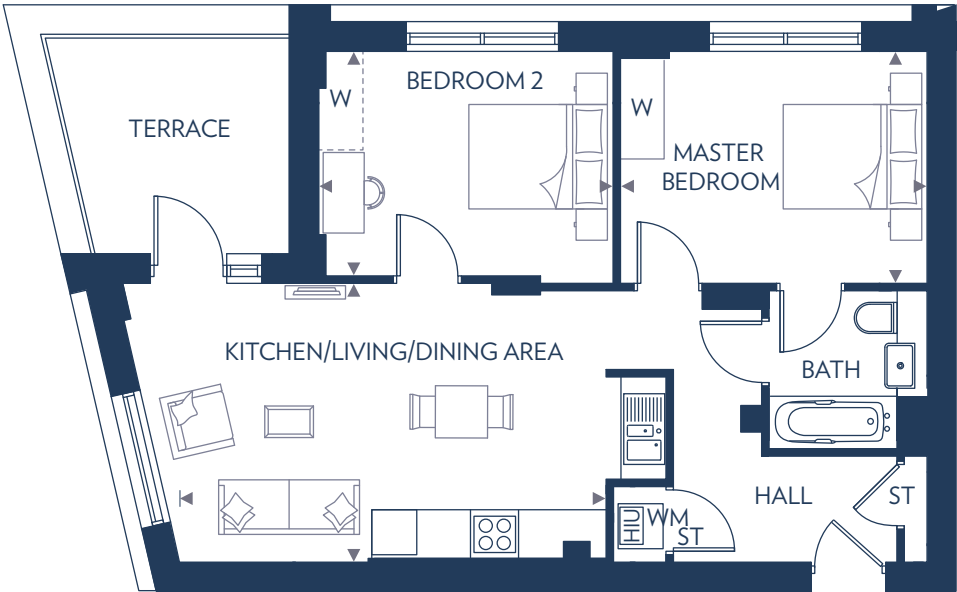


First Floor



Ground Floor

2 BEDROOM APARTMENT
PLOTS 728, 738, 748 & 758

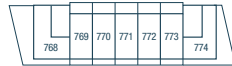


Kitchen/Living/Dining Area
5.70m x 3.72m 18'8" x 12'2"

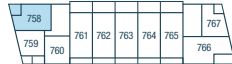
Master Bedroom
4.09m x 3.10m 13'5" x 10'2"

Bedroom 2
3.93m x 3.10m 12'10" x 10'2"

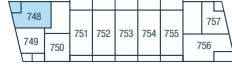
HIU – Heat Interface Unit
ST – Store
W – Wardrobe
WM – Washing Machine



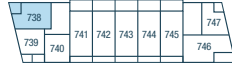
Fifth Floor



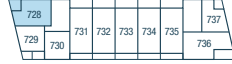
Fourth Floor



Third Floor



Second Floor



First Floor

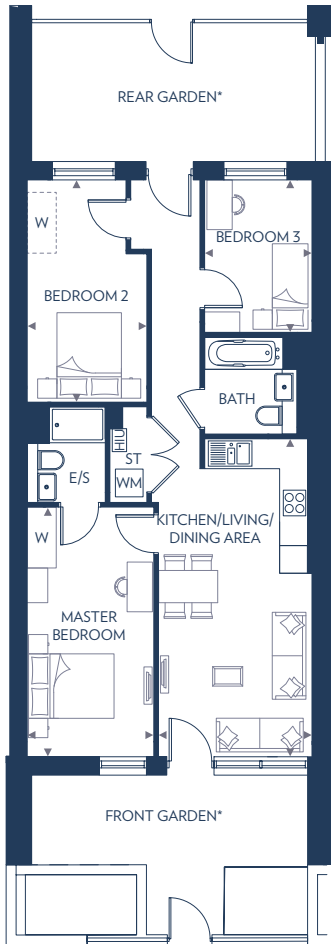


Ground Floor

These floor plans are indicative only and depict a typical layout. The dimensions and layouts have been taken from the planning drawings issued, however the dimensions are subject to change following the issue of working drawings. Furniture is used to indicate positioning only. For exact plot specification, details of external and internal finishes, dimensions and floor plan differences consult your sales executive. All dimensions are + or – 100mm and floor plans are not shown to scale.

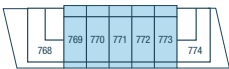
These floor plans are indicative only and depict a typical layout. The dimensions and layouts have been taken from the planning drawings issued, however the dimensions are subject to change following the issue of working drawings. Furniture is used to indicate positioning only. For exact plot specification, details of external and internal finishes, dimensions and floor plan differences consult your sales executive. All dimensions are + or – 100mm and floor plans are not shown to scale.

3 BEDROOM APARTMENT
PLOTS 722-726, 731-735, 741-745,
751-755, 761-765 & 769-773

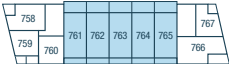


Kitchen/Living/Dining Area	6.88m x 3.32m	22'7" x 10'10"
Master Bedroom	5.37m x 2.75m	17'7" x 9'0"
Bedroom 2	4.81m (max) x 2.60m (max)	15'9" (max) x 8'6" (max)
Bedroom 3	3.30m x 2.32m	10'9" x 7'7"

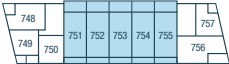
E/S – En Suite
HIU – Heat Interface Unit
ST – Store
W – Wardrobe
WM – Washing Machine



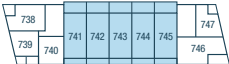
Fifth Floor



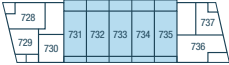
Fourth Floor



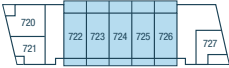
Third Floor



Second Floor



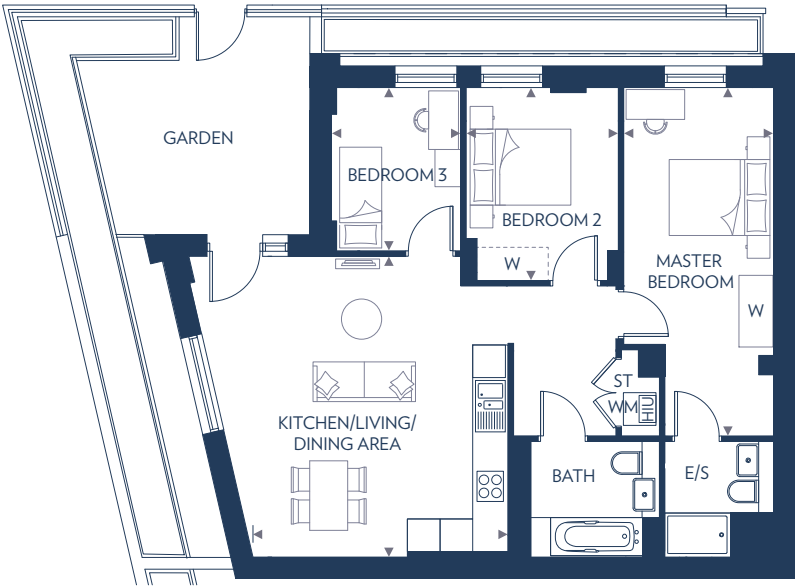
First Floor



Ground Floor

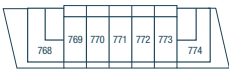
These floor plans are indicative only and depict a typical layout. The dimensions and layouts have been taken from the planning drawings issued, however the dimensions are subject to change following the issue of working drawings. Furniture is used to indicate positioning only. For exact plot specification, details of external and internal finishes, dimensions and floor plan differences consult your sales executive. All dimensions are + or – 100mm and floor plans are not shown to scale. *Balcony to plots on first, second, third, fourth and fifth floor.

3 BEDROOM APARTMENT
PLOT 720

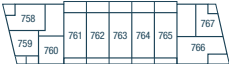


Kitchen/Living/Dining Area	5.52m x 4.68m	18'1" x 15'4"
Master Bedroom	6.42m x 2.75m (max)	21'1" x 9'0"
Bedroom 2	3.54m x 2.79m	11'7" x 9'2"
Bedroom 3	3.00m x 2.37m	9'10" x 7'9"

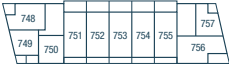
E/S – En Suite
HIU – Heat Interface Unit
ST – Store
W – Wardrobe
WM – Washing Machine



Fifth Floor



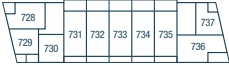
Fourth Floor



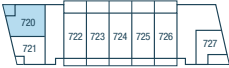
Third Floor



Second Floor



First Floor



Ground Floor

These floor plans are indicative only and depict a typical layout. The dimensions and layouts have been taken from the planning drawings issued, however the dimensions are subject to change following the issue of working drawings. Furniture is used to indicate positioning only. For exact plot specification, details of external and internal finishes, dimensions and floor plan differences consult your sales executive. All dimensions are + or – 100mm and floor plans are not shown to scale.

2 BEDROOM APARTMENT
PLOT 774



Kitchen/Living/Dining Area
6.17m x 5.96m (max) 20'3" x 19'6" (max)

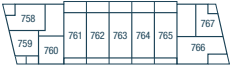
Master Bedroom
4.00m x 3.62m (max) 13'1" x 11'10" (max)

Bedroom 2
3.64m x 2.72m 11'11" x 8'11"

E/S – En Suite
HIU – Heat Interface Unit
ST – Store
W – Wardrobe
WM – Washing Machine



Fifth Floor



Fourth Floor



Third Floor



Second Floor



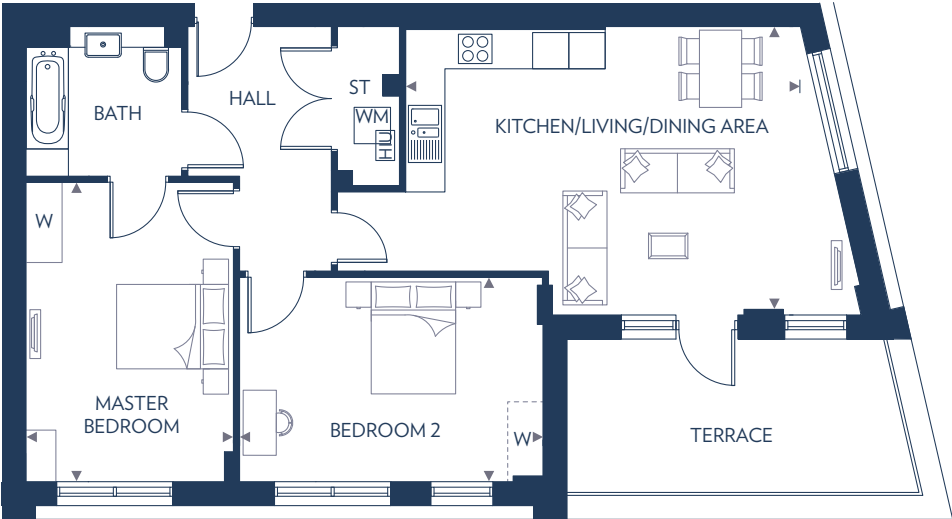
First Floor



Ground Floor

These floor plans are indicative only and depict a typical layout. The dimensions and layouts have been taken from the planning drawings issued, however the dimensions are subject to change following the issue of working drawings. Furniture is used to indicate positioning only. For exact plot specification, details of external and internal finishes, dimensions and floor plan differences consult your sales executive. All dimensions are + or – 100mm and floor plans are not shown to scale.

2 BEDROOM APARTMENT
PLOTS 736, 746, 756 & 766



Kitchen/Living/Dining Area
6.52m x 4.77m 21'4" x 15'7"

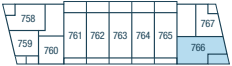
Master Bedroom
4.95m x 3.40m 16'2" x 11'2"

Bedroom 2
5.01m x 3.38m 16'5" x 11'1"

E/S – En Suite
HIU – Heat Interface Unit
ST – Store
W – Wardrobe
WM – Washing Machine



Fifth Floor



Fourth Floor



Third Floor



Second Floor



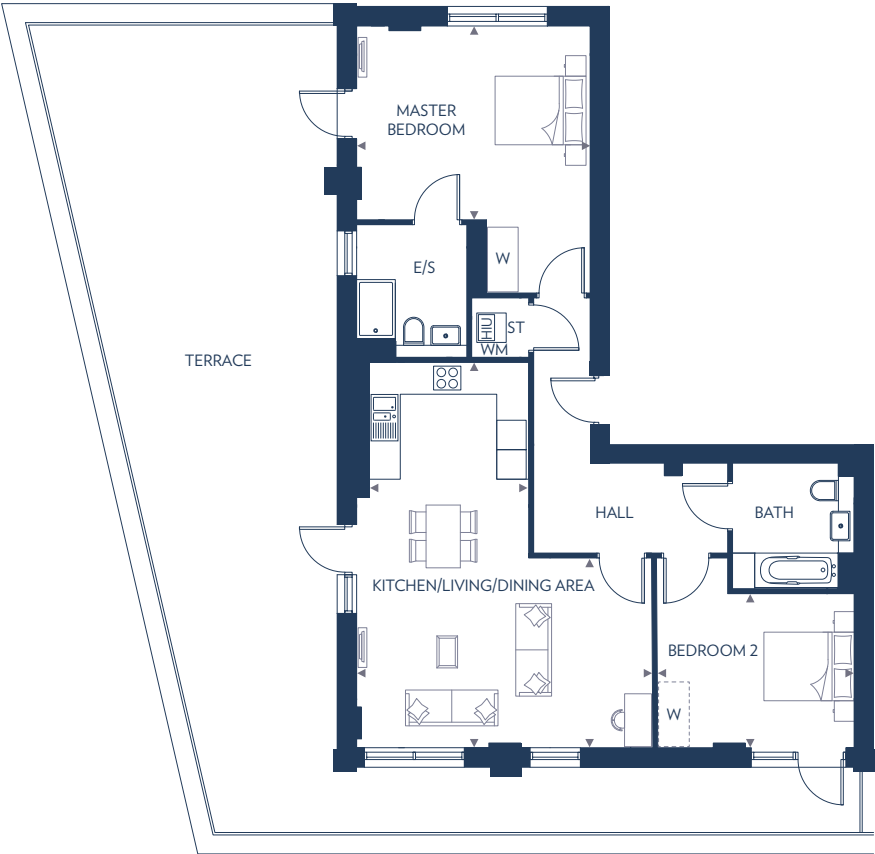
First Floor



Ground Floor

These floor plans are indicative only and depict a typical layout. The dimensions and layouts have been taken from the planning drawings issued, however the dimensions are subject to change following the issue of working drawings. Furniture is used to indicate positioning only. For exact plot specification, details of external and internal finishes, dimensions and floor plan differences consult your sales executive. All dimensions are + or – 100mm and floor plans are not shown to scale.

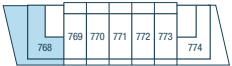
2 BEDROOM APARTMENT
PLOT 768



Kitchen/Living/Dining Area	
7.84m (max) 3.86m (min) x 6.05m (max) 3.50m (min)	25'8" (max) 12'8" (min) x 19'10" (max) 11'5" (min)
Master Bedroom	
4.75m x 3.94m	15'7" x 12'11"
Bedroom 2	
3.97m x 3.13m	13'0" x 10'3"

E/S – En Suite
HIU – Heat Interface Unit
ST – Store
W – Wardrobe
WM – Washing Machine

These floor plans are indicative only and depict a typical layout. The dimensions and layouts have been taken from the planning drawings issued, however the dimensions are subject to change following the issue of working drawings. Furniture is used to indicate positioning only. For exact plot specification, details of external and internal finishes, dimensions and floor plan differences consult your sales executive. All dimensions are + or – 100mm and floor plans are not shown to scale.



Fifth Floor



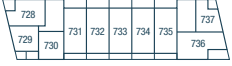
Fourth Floor



Third Floor



Second Floor



First Floor



Ground Floor



TRIATHLON POINT



1 BEDROOM APARTMENT
PLOTS 779, 790 & 805



Fifth Floor



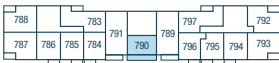
Fourth Floor



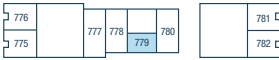
Third Floor



Second Floor



First Floor



Ground Floor

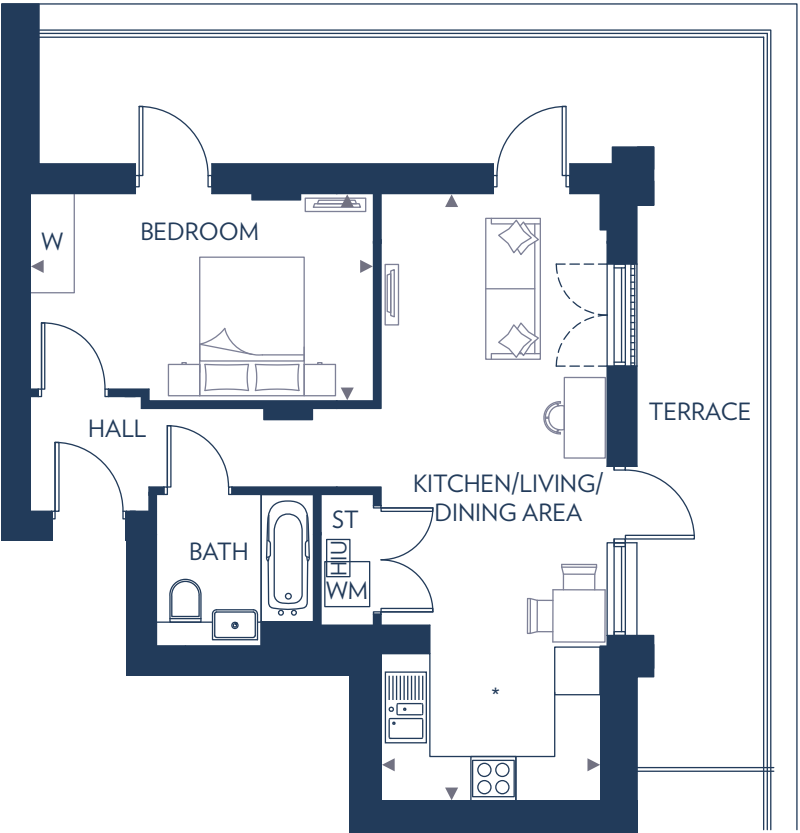
Kitchen/Living/Dining Area
5.60m x 4.79m 18'4" x 15'8"

Bedroom
3.90m x 3.47m 12'9" x 11'4"

HIU – Heat Interface Unit
ST – Store
W – Wardrobe
WM – Washing Machine

These floor plans are indicative only and depict a typical layout. The dimensions and layouts have been taken from the planning drawings issued, however the dimensions are subject to change following the issue of working drawings. Furniture is used to indicate positioning only. For exact plot specification, details of external and internal finishes, dimensions and floor plan differences consult your sales executive. All dimensions are + or – 100mm and floor plans are not shown to scale. *Terrace to plots on first and second floor.

1 BEDROOM APARTMENT
PLOTS 828 & 837



Fifth Floor



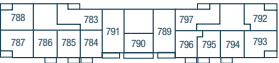
Fourth Floor



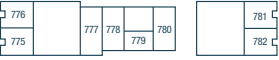
Third Floor



Second Floor



First Floor



Ground Floor

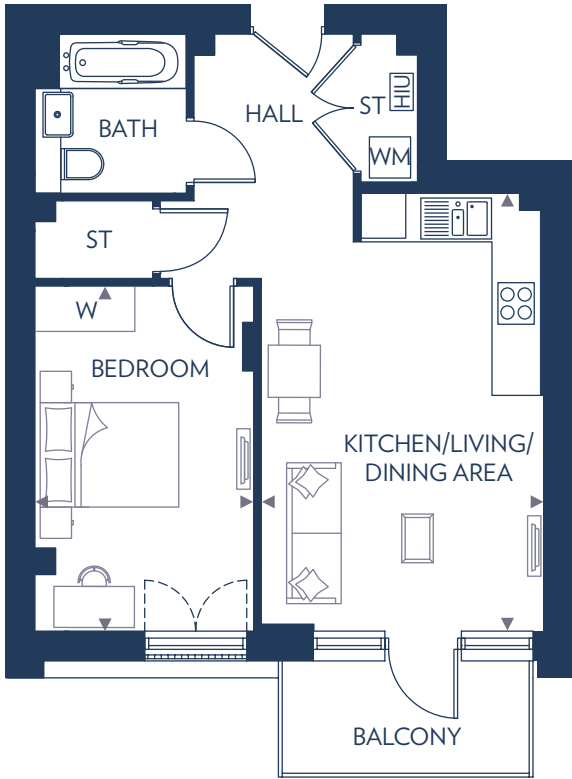
Kitchen/Living/Dining Area
8.08m x 3.02m (max) 2.90m (min) 26'6" x 9'11" (max) 9'6" (min)

Bedroom
4.59m x 2.76m 15'1" x 9'1"

HIU – Heat Interface Unit
ST – Store
W – Wardrobe
WM – Washing Machine

These floor plans are indicative only and depict a typical layout. The dimensions and layouts have been taken from the planning drawings issued, however the dimensions are subject to change following the issue of working drawings. Furniture is used to indicate positioning only. For exact plot specification, details of external and internal finishes, dimensions and floor plan differences consult your sales executive. All dimensions are + or – 100mm and floor plans are not shown to scale. Plot 837 is handed. *Kitchen layouts vary, please speak to a sales executive for details.

1 BEDROOM APARTMENT
PLOTS 785, 795, 800 & 810



Fifth Floor



Fourth Floor



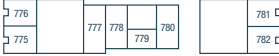
Third Floor



Second Floor



First Floor



Ground Floor

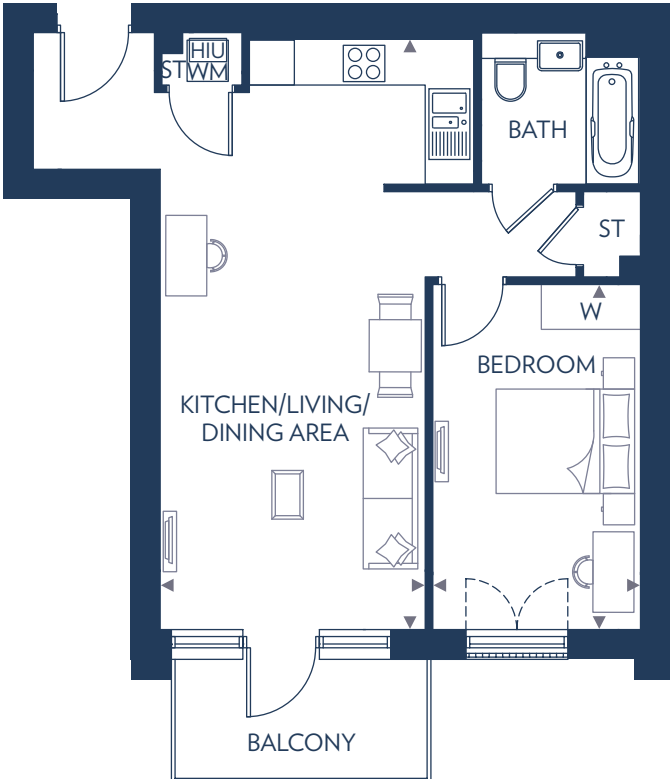
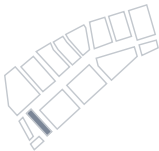
Kitchen/Living/Dining Area
5.82m x 3.78m 19'1" x 12'4"

Bedroom
4.61m x 2.92m 15'1" x 9'7"

HIU – Heat Interface Unit
ST – Store
W – Wardrobe
WM – Washing Machine

These floor plans are indicative only and depict a typical layout. The dimensions and layouts have been taken from the planning drawings issued, however the dimensions are subject to change following the issue of working drawings. Furniture is used to indicate positioning only. For exact plot specification, details of external and internal finishes, dimensions and floor plan differences consult your sales executive. All dimensions are + or – 100mm and floor plans are not shown to scale. Plots 795 & 810 are handed.

1 BEDROOM APARTMENT
PLOTS 784, 796, 799 & 811



Fifth Floor



Fourth Floor



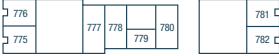
Third Floor



Second Floor



First Floor



Ground Floor

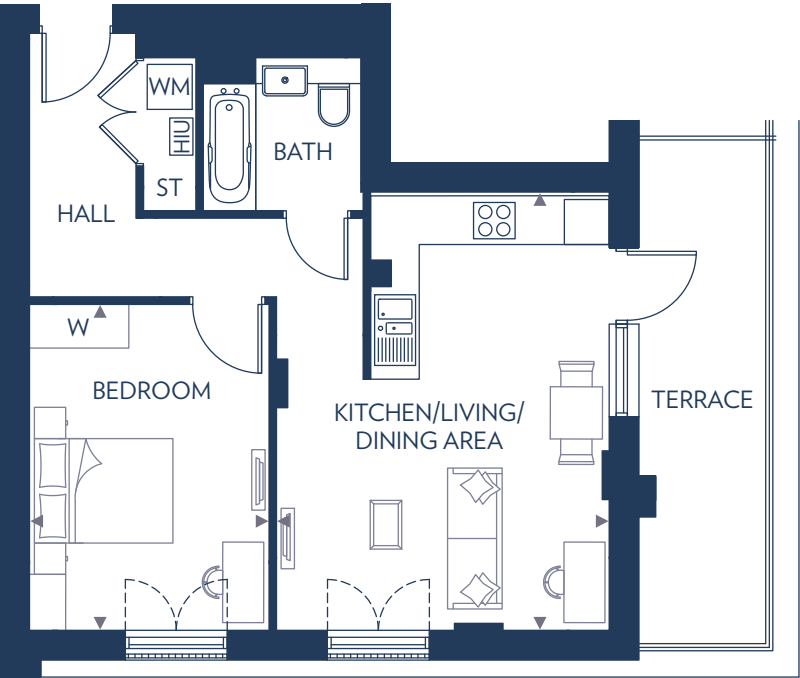
Kitchen/Living/Dining Area
7.90m x 3.54m 25'11" x 11'7"

Bedroom
4.61m x 2.77m 15'1" x 9'1"

HIU – Heat Interface Unit
ST – Store
W – Wardrobe
WM – Washing Machine

These floor plans are indicative only and depict a typical layout. The dimensions and layouts have been taken from the planning drawings issued, however the dimensions are subject to change following the issue of working drawings. Furniture is used to indicate positioning only. For exact plot specification, details of external and internal finishes, dimensions and floor plan differences consult your sales executive. All dimensions are + or – 100mm and floor plans are not shown to scale. Plots 796 & 811 are handed.

1 BEDROOM APARTMENT
PLOTS 829 & 836



Fifth Floor



Fourth Floor



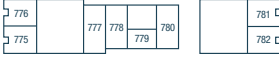
Third Floor



Second Floor



First Floor



Ground Floor

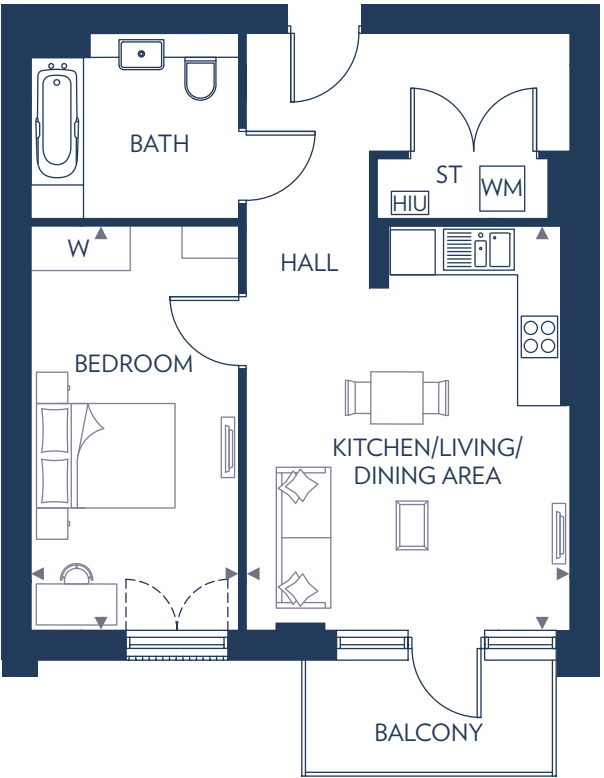
Kitchen/Living/Dining Area
5.78m x 4.44m (max) 18'11" x 14'7" (max)

Bedroom
4.35m x 3.20m 14'3" x 10'6"

HIU – Heat Interface Unit
ST – Store
W – Wardrobe
WM – Washing Machine

These floor plans are indicative only and depict a typical layout. The dimensions and layouts have been taken from the planning drawings issued, however the dimensions are subject to change following the issue of working drawings. Furniture is used to indicate positioning only. For exact plot specification, details of external and internal finishes, dimensions and floor plan differences consult your sales executive. All dimensions are + or – 100mm and floor plans are not shown to scale. Plot 836 is handed.

1 BEDROOM APARTMENT
PLOTS 786, 794, 801, 809,
815, 820, 825, 830 & 835



Fifth Floor



Fourth Floor



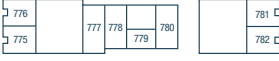
Third Floor



Second Floor



First Floor



Ground Floor

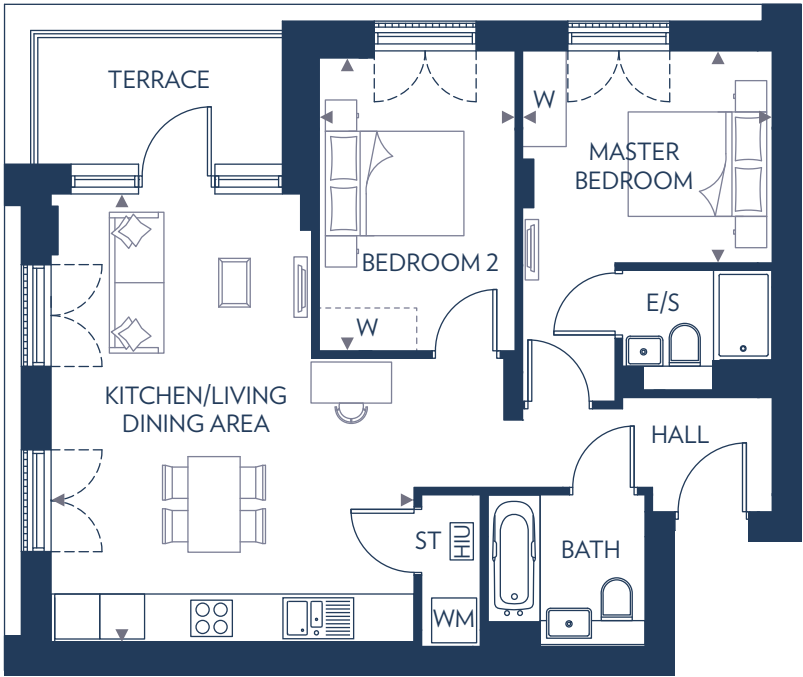
Kitchen/Living/Dining Area
5.40m x 4.32m 17'8" x 14'2"

Bedroom
5.40m x 2.77m 17'8" x 9'1"

HIU – Heat Interface Unit
ST – Store
W – Wardrobe
WM – Washing Machine

These floor plans are indicative only and depict a typical layout. The dimensions and layouts have been taken from the planning drawings issued, however the dimensions are subject to change following the issue of working drawings. Furniture is used to indicate positioning only. For exact plot specification, details of external and internal finishes, dimensions and floor plan differences consult your sales executive. All dimensions are + or – 100mm and floor plans are not shown to scale. Plots 794, 809, 820 & 830 are handed.

2 BEDROOM APARTMENT
PLOTS 788, 792, 803, 807, 817, 818 & 827



Fifth Floor



Fourth Floor



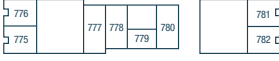
Third Floor



Second Floor



First Floor



Ground Floor

Kitchen/Living/Dining Area
5.96m x 4.85m (max) 19'7" x 15'10" (max)

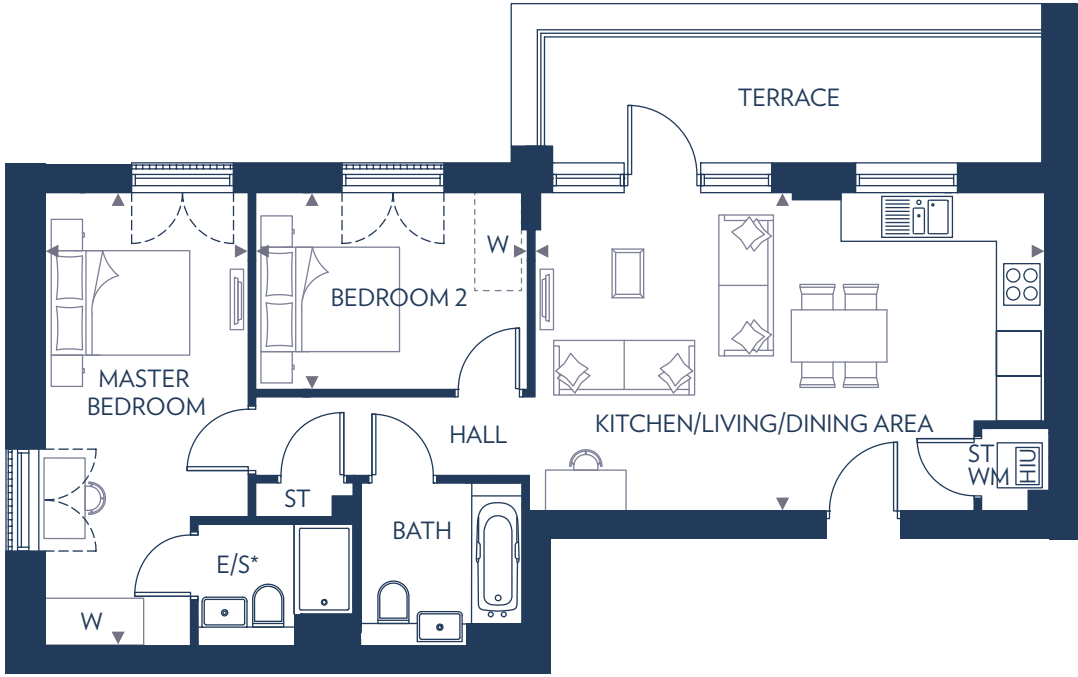
Master Bedroom
3.33m x 2.83m 10'11" x 9'3"

Bedroom 2
3.91m x 2.61m 12'10" x 8'7"

E/S – En Suite
HIU – Heat Interface Unit
ST – Store
W – Wardrobe
WM – Washing Machine

These floor plans are indicative only and depict a typical layout. The dimensions and layouts have been taken from the planning drawings issued, however the dimensions are subject to change following the issue of working drawings. Furniture is used to indicate positioning only. For exact plot specification, details of external and internal finishes, dimensions and floor plan differences consult your sales executive. All dimensions are + or – 100mm and floor plans are not shown to scale. Plots 792, 807 & 818 are handed.

2 BEDROOM APARTMENT
PLOTS 832 & 833



Fifth Floor



Fourth Floor



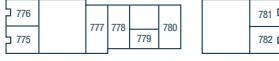
Third Floor



Second Floor



First Floor



Ground Floor

Kitchen/Living/Dining Area
6.79m x 4.25m 22'3" x 13'11"

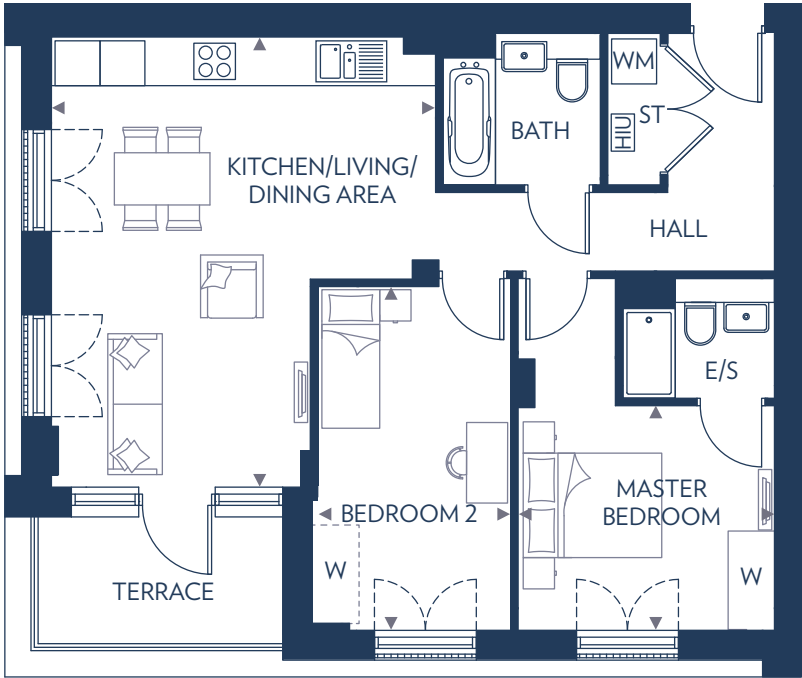
Master Bedroom
6.05m x 2.71m (max) 19'10" x 8'10" (max)

Bedroom 2
3.63m x 2.62m 11'10" x 8'7"

E/S – En Suite
HIU – Heat Interface Unit
ST – Store
W – Wardrobe
WM – Washing Machine

These floor plans are indicative only and depict a typical layout. The dimensions and layouts have been taken from the planning drawings issued, however the dimensions are subject to change following the issue of working drawings. Furniture is used to indicate positioning only. For exact plot specification, details of external and internal finishes, dimensions and floor plan differences consult your sales executive. All dimensions are + or – 100mm and floor plans are not shown to scale. Plot 833 is handed. *Layout of en suite varies. Please speak to a sales executive for details.

2 BEDROOM APARTMENT
PLOTS 787, 793, 802, 808, 816, 819 & 826



Kitchen/Living/Dining Area
5.98m x 5.13m (max) 19'7" x 16'10" (max)

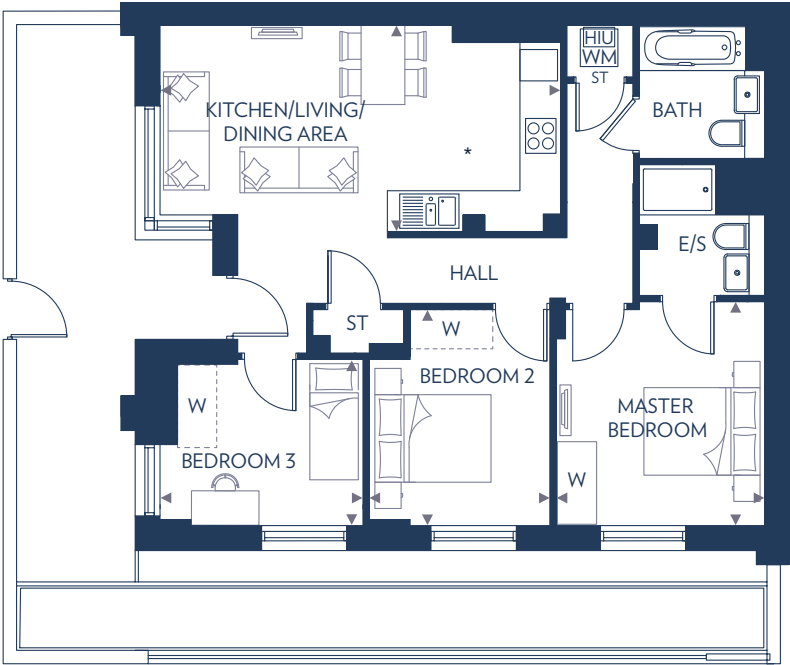
Master Bedroom
3.42m (max) x 3.00m 11'2" (max) x 9'10"

Bedroom 2
4.59m x 2.64m 15'0" x 8'8"

E/S – En Suite
HIU – Heat Interface Unit
ST – Store
W – Wardrobe
WM – Washing Machine

These floor plans are indicative only and depict a typical layout. The dimensions and layouts have been taken from the planning drawings issued, however the dimensions are subject to change following the issue of working drawings. Furniture is used to indicate positioning only. For exact plot specification, details of external and internal finishes, dimensions and floor plan differences consult your sales executive. All dimensions are + or – 100mm and floor plans are not shown to scale. Plots 793, 808 & 819 are handed. Dimensions to plots vary, please refer to customer plans.

3 BEDROOM APARTMENT
PLOTS 775, 776, 781 & 782



Kitchen/Living/Dining Area
6.38m x 3.28m 20'11" x 10'9"

Master Bedroom
3.55m x 3.32m 11'7" x 10'10"

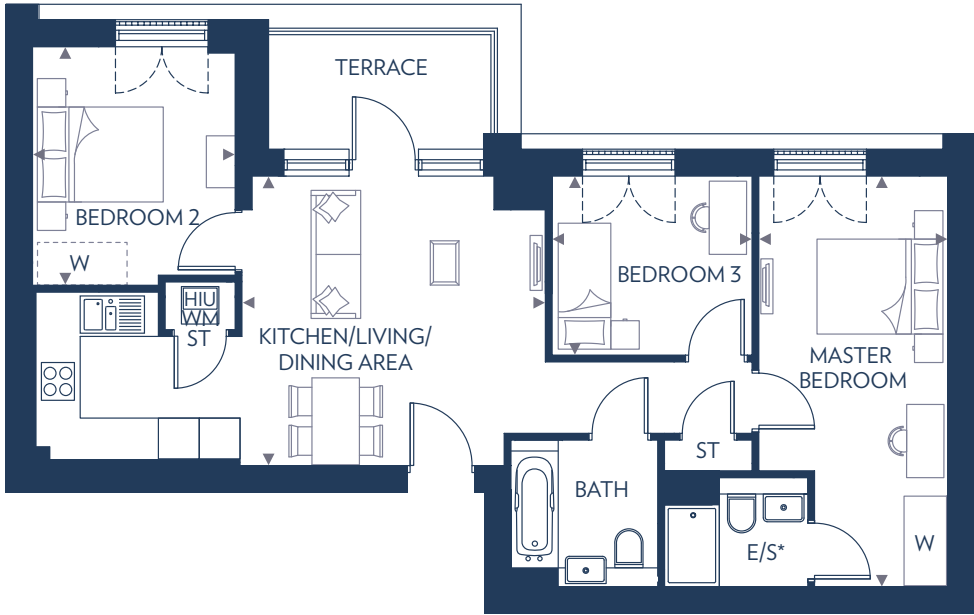
Bedroom 2
3.44m x 2.87m 11'3" x 9'5"

Bedroom 3
3.23m x 2.65m (max) 10'7" x 8'8" (max)

E/S – En Suite
HIU – Heat Interface Unit
ST – Store
W – Wardrobe
WM – Washing Machine

These floor plans are indicative only and depict a typical layout. The dimensions and layouts have been taken from the planning drawings issued, however the dimensions are subject to change following the issue of working drawings. Furniture is used to indicate positioning only. For exact plot specification, details of external and internal finishes, dimensions and floor plan differences consult your sales executive. All dimensions are + or – 100mm and floor plans are not shown to scale. Plots 781 & 782 are handed. *Kitchen sizes vary per plot. Please refer to customer plans.

3 BEDROOM APARTMENT
PLOTS 783, 797, 798, 812, 813, 822 & 823



Kitchen/Living/Dining Area
4.45m x 4.25m 14'7" x 13'11"

Master Bedroom
6.05m x 2.77m (max) 19'10" x 9'1" (max)

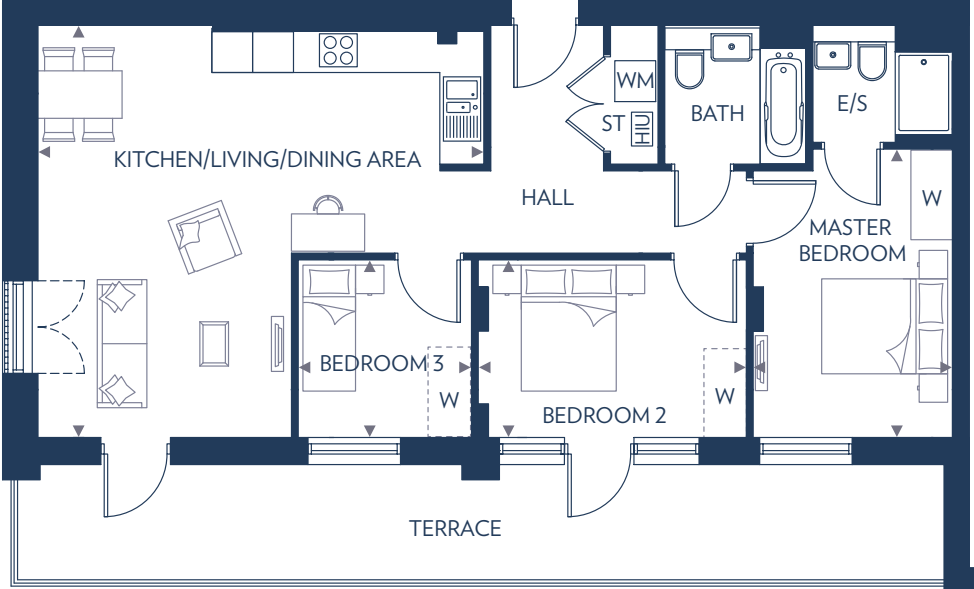
Bedroom 2
3.50m x 2.97m 11'6" x 9'9"

Bedroom 3
2.93m x 2.62m 9'7" x 8'7"

E/S – En Suite
HIU – Heat Interface Unit
ST – Store
W – Wardrobe
WM – Washing Machine

These floor plans are indicative only and depict a typical layout. The dimensions and layouts have been taken from the planning drawings issued, however the dimensions are subject to change following the issue of working drawings. Furniture is used to indicate positioning only. For exact plot specification, details of external and internal finishes, dimensions and floor plan differences consult your sales executive. All dimensions are + or – 100mm and floor plans are not shown to scale. Plots 797, 812 & 822 are handed.

3 BEDROOM APARTMENT
PLOTS 831 & 834



Kitchen/Living/Dining Area
6.55m (max) x 6.06m (max) 21'6" (max) x 19'10" (max)

Master Bedroom
4.23m x 2.92m 13'10" x 9'7"

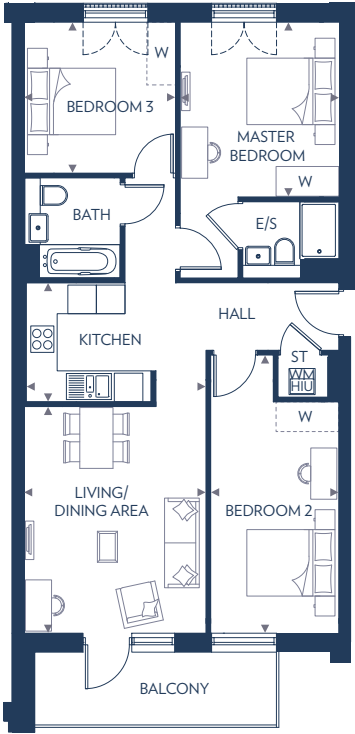
Bedroom 2
3.94m x 2.60m 12'11" x 8'6"

Bedroom 3
2.60m x 2.54m 8'6" x 8'4"

E/S – En Suite
HIU – Heat Interface Unit
ST – Store
W – Wardrobe
WM – Washing Machine

These floor plans are indicative only and depict a typical layout. The dimensions and layouts have been taken from the planning drawings issued, however the dimensions are subject to change following the issue of working drawings. Furniture is used to indicate positioning only. For exact plot specification, details of external and internal finishes, dimensions and floor plan differences consult your sales executive. All dimensions are + or – 100mm and floor plans are not shown to scale.

3 BEDROOM APARTMENT
PLOTS 789, 791, 804 & 806



Kitchen	12'6" x 8'2"
3.82m x 2.50m	
Living/Dining Area	15'7" x 12'6"
4.75m x 3.82m	
Master Bedroom	12'0" x 10'10"
3.66m x 3.30m	
Bedroom 2	19'2" (max) x 8'9" (max)
5.84m (max) x 2.68m (max)	
Bedroom 3	10'5" x 10'4"
3.18m x 3.16m	

E/S – En Suite
HIU – Heat Interface Unit
ST – Store
W – Wardrobe
WM – Washing Machine



Fifth Floor



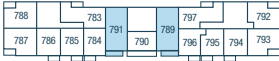
Fourth Floor



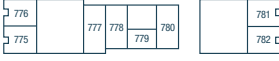
Third Floor



Second Floor



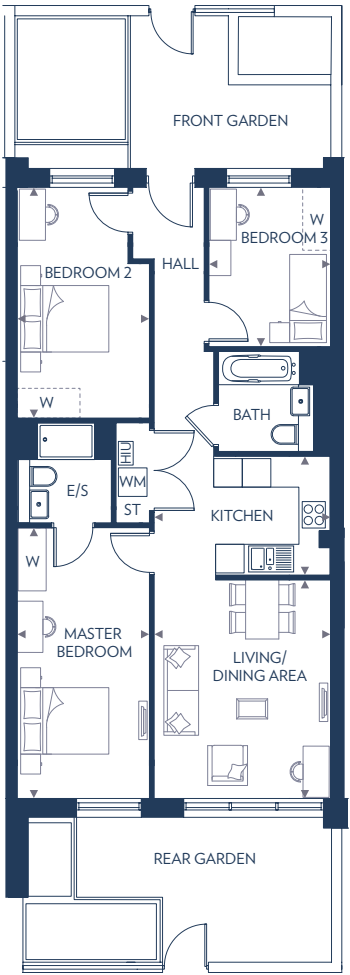
First Floor



Ground Floor

These floor plans are indicative only and depict a typical layout. The dimensions and layouts have been taken from the planning drawings issued, however the dimensions are subject to change following the issue of working drawings. Furniture is used to indicate positioning only. For exact plot specification, details of external and internal finishes, dimensions and floor plan differences consult your sales executive. All dimensions are + or – 100mm and floor plans are not shown to scale. Plots 789 & 804 are handed.

3 BEDROOM APARTMENT
PLOTS 778 & 780



Kitchen	12'3" x 8'2"
3.73m x 2.50m	
Living/Dining Area	15'0" x 12'3"
4.58m x 3.73m	
Master Bedroom	18'7" x 9'1"
5.68m x 2.77m	
Bedroom 2	15'10" (max) x 9'1" (max)
4.84m (max) x 2.77m (max)	
Bedroom 3	10'11" x 8'4"
3.34m x 2.56m	

E/S – En Suite
HIU – Heat Interface Unit
ST – Store
W – Wardrobe
WM – Washing Machine



Fifth Floor



Fourth Floor



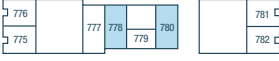
Third Floor



Second Floor



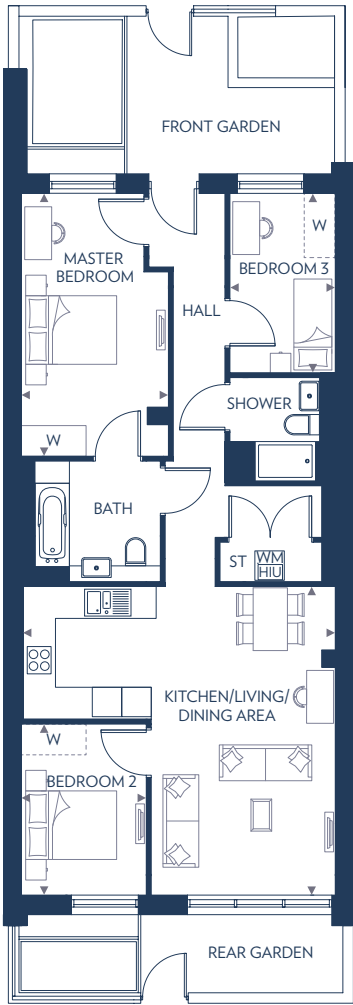
First Floor



Ground Floor

These floor plans are indicative only and depict a typical layout. The dimensions and layouts have been taken from the planning drawings issued, however the dimensions are subject to change following the issue of working drawings. Furniture is used to indicate positioning only. For exact plot specification, details of external and internal finishes, dimensions and floor plan differences consult your sales executive. All dimensions are + or – 100mm and floor plans are not shown to scale. Plot 780 is handed.

3 BEDROOM APARTMENT
PLOT 777

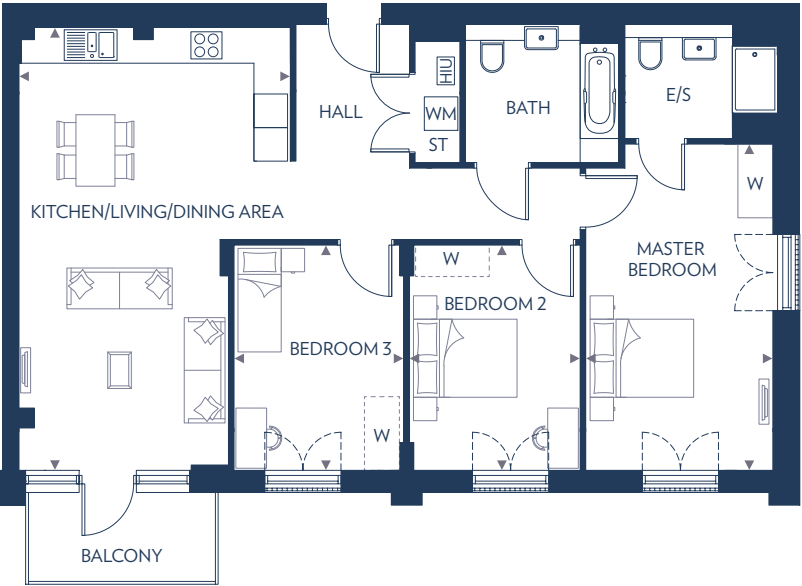


Kitchen/Living/Dining Area	
6.29m (max) x 6.28m (max)	20'7" (max) x 20'7" (max)
Master Bedroom	
5.35m x 3.00m (max)	17'6" x 9'10" (max)
Bedroom 2	
3.48m x 2.55m	11'5" x 8'4"
Bedroom 3	
3.65m x 2.14m	11'11" x 7'0"

HIU – Heat Interface Unit
ST – Store
W – Wardrobe
WM – Washing Machine

These floor plans are indicative only and depict a typical layout. The dimensions and layouts have been taken from the planning drawings issued, however the dimensions are subject to change following the issue of working drawings. Furniture is used to indicate positioning only. For exact plot specification, details of external and internal finishes, dimensions and floor plan differences consult your sales executive. All dimensions are + or – 100mm and floor plans are not shown to scale.

3 BEDROOM APARTMENT
PLOTS 814, 821 & 824



Kitchen/Living/Dining Area	
7.90m (max) x 4.85m (max)	25'11" (max) x 15'11" (max)
Master Bedroom	
5.83m x 3.34m	19'1" x 10'11"
Bedroom 2	
4.02m x 3.04m	13'2" x 10'0"
Bedroom 3	
4.02m x 3.03m	13'2" x 9'11"

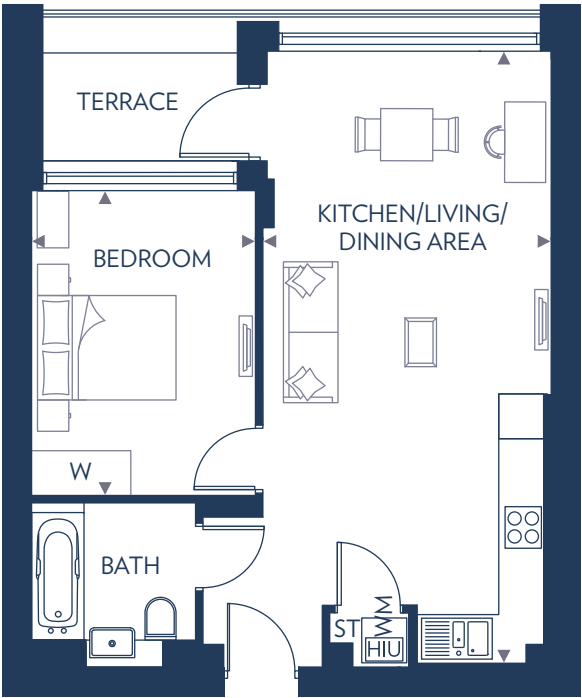
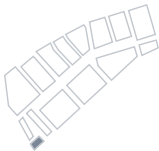
E/S – En Suite
HIU – Heat Interface Unit
ST – Store
W – Wardrobe
WM – Washing Machine

These floor plans are indicative only and depict a typical layout. The dimensions and layouts have been taken from the planning drawings issued, however the dimensions are subject to change following the issue of working drawings. Furniture is used to indicate positioning only. For exact plot specification, details of external and internal finishes, dimensions and floor plan differences consult your sales executive. All dimensions are + or – 100mm and floor plans are not shown to scale. Plot 821 is handed.

AUDAX HEIGHTS



1 BEDROOM APARTMENT
PLOTS 843, 844, 849, 850,
855, 856, 861, 862, 867 & 868



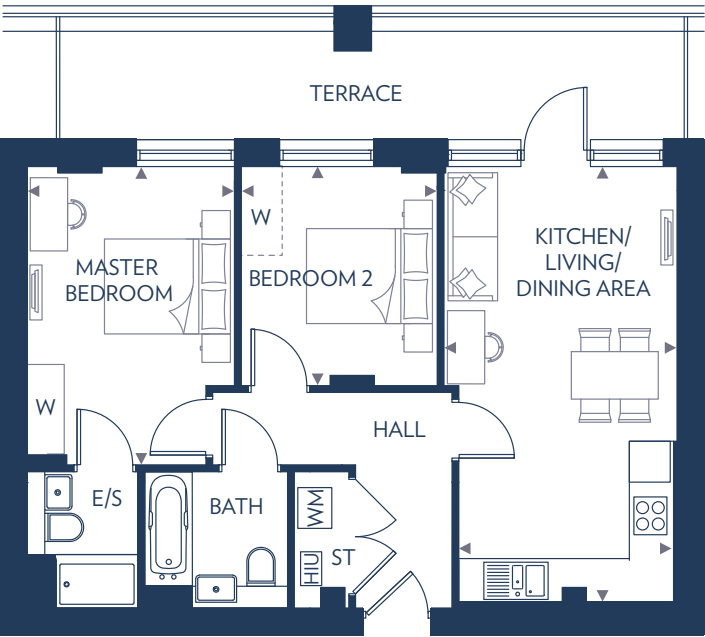
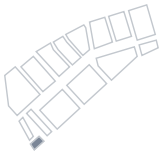
Kitchen/Living/Dining Area
8.15m x 3.85m 26'8" x 12'7"

Bedroom
4.07m x 2.99m 13'4" x 9'9"

HIU – Heat Interface Unit
ST – Store
W – Wardrobe
WM – Washing Machine

These floor plans are indicative only and depict a typical layout. The dimensions and layouts have been taken from the planning drawings issued, however the dimensions are subject to change following the issue of working drawings. Furniture is used to indicate positioning only. For exact plot specification, details of external and internal finishes, dimensions and floor plan differences consult your sales executive. All dimensions are + or – 100mm and floor plans are not shown to scale. Plots 844, 850, 856, 862 & 868 are handed.

2 BEDROOM APARTMENT
PLOTS 873 & 878



Kitchen/Living/Dining Area
6.39m x 3.42m (max) 3.13m (min) 20'11" x 11'2" (max) 10'3" (min)

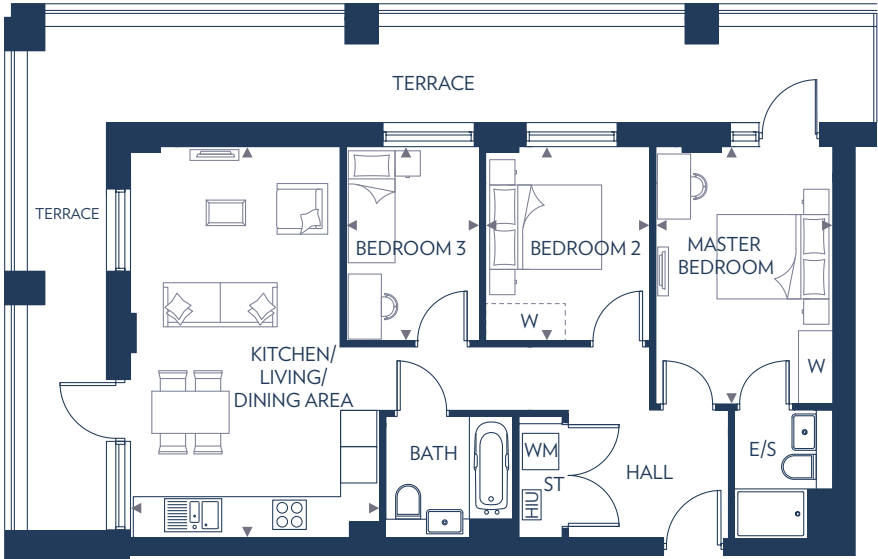
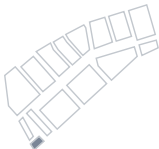
Master Bedroom
4.38m x 3.04m 14'4" x 9'11"

Bedroom 2
3.21m x 2.87m 10'6" x 9'5"

E/S – En Suite
HIU – Heat Interface Unit
ST – Store
W – Wardrobe
WM – Washing Machine

These floor plans are indicative only and depict a typical layout. The dimensions and layouts have been taken from the planning drawings issued, however the dimensions are subject to change following the issue of working drawings. Furniture is used to indicate positioning only. For exact plot specification, details of external and internal finishes, dimensions and floor plan differences consult your sales executive. All dimensions are + or – 100mm and floor plans are not shown to scale.

3 BEDROOM APARTMENT
PLOTS 872 & 877

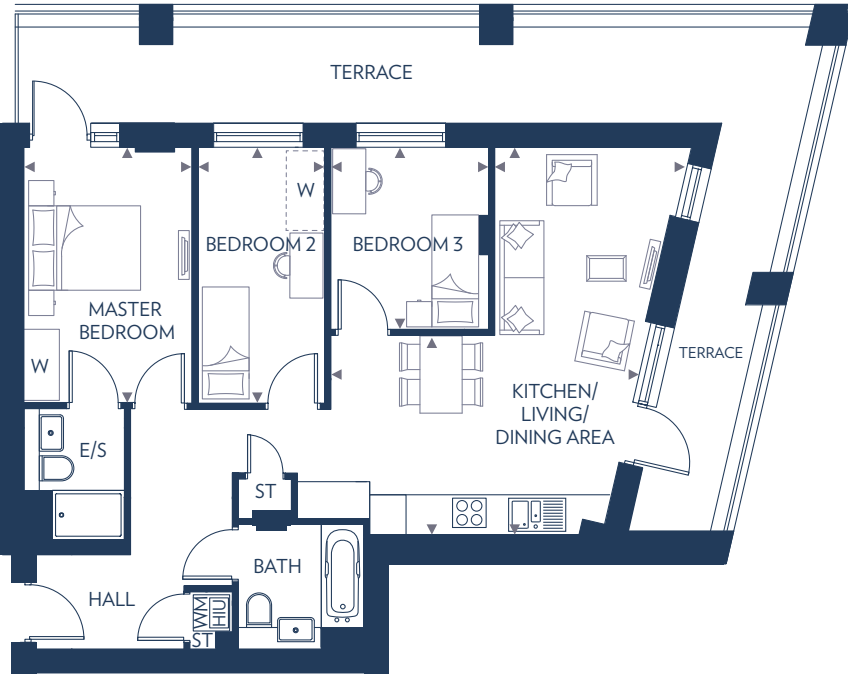
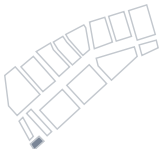


Kitchen/Living/Dining Area	
6.41m x 4.12m (max)	21'0" x 13'6" (max)
Master Bedroom	
4.28m x 2.92m	14'0" x 9'7"
Bedroom 2	
3.21m x 2.71m	10'6" x 8'10"
Bedroom 3	
3.21m x 2.19m	10'6" x 7'2"

E/S – En Suite
HIU – Heat Interface Unit
ST – Store
W – Wardrobe
WM – Washing Machine

These floor plans are indicative only and depict a typical layout. The dimensions and layouts have been taken from the planning drawings issued, however the dimensions are subject to change following the issue of working drawings. Furniture is used to indicate positioning only. For exact plot specification, details of external and internal finishes, dimensions and floor plan differences consult your sales executive. All dimensions are + or – 100mm and floor plans are not shown to scale.

3 BEDROOM APARTMENT
PLOTS 874 & 879

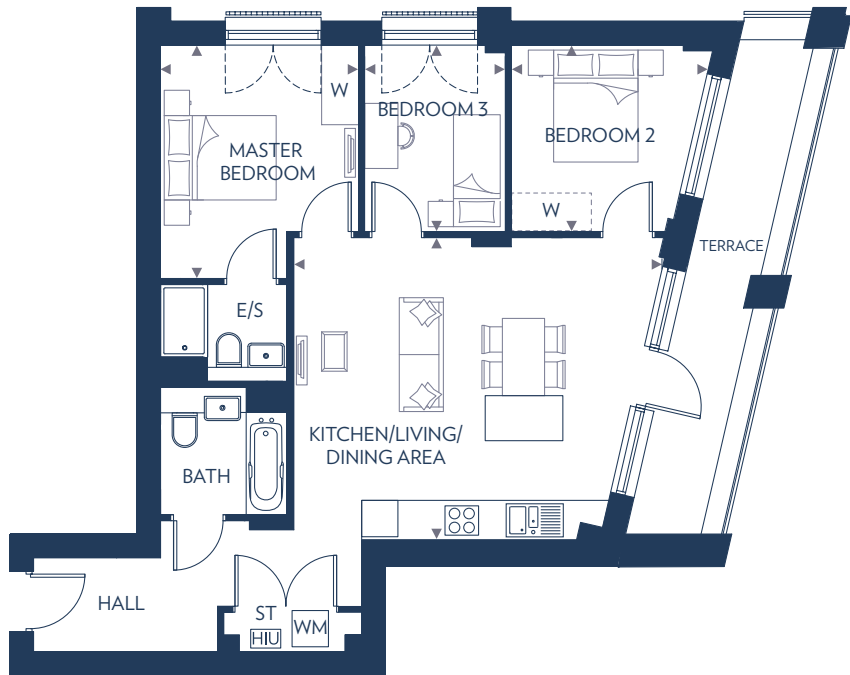
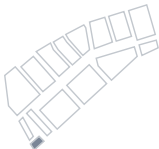


Kitchen/Living/Dining Area	
6.41m (max) 3.30m (min) x 5.12m (max) 3.19m (min)	21'0" (max) 10'10" (min) x 16'9" (max) 10'5" (min)
Master Bedroom	
4.23m x 2.77m	13'10" x 9'1"
Bedroom 2	
4.23m x 2.10m	13'10" x 6'10"
Bedroom 3	
3.01m x 2.61m	9'10" x 8'6"

E/S – En Suite
HIU – Heat Interface Unit
ST – Store
W – Wardrobe
WM – Washing Machine

These floor plans are indicative only and depict a typical layout. The dimensions and layouts have been taken from the planning drawings issued, however the dimensions are subject to change following the issue of working drawings. Furniture is used to indicate positioning only. For exact plot specification, details of external and internal finishes, dimensions and floor plan differences consult your sales executive. All dimensions are + or – 100mm and floor plans are not shown to scale.

3 BEDROOM APARTMENT
PLOTS 845, 851, 857, 863 & 869

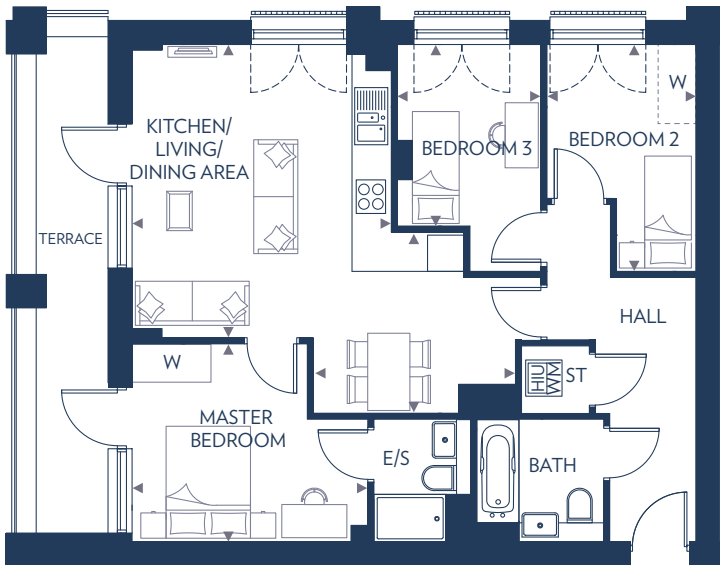
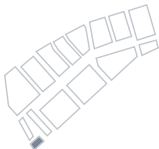


Kitchen/Living/Dining Area	
6.07m x 4.96m	19'11" x 16'3"
Master Bedroom	
3.85m x 3.26m	12'7" x 10'8"
Bedroom 2	
3.32m x 3.08m	10'11" x 10'1"
Bedroom 3	
3.08m x 2.32m	10'1" x 7'7"

E/S – En Suite
HIU – Heat Interface Unit
ST – Store
W – Wardrobe
WM – Washing Machine

These floor plans are indicative only and depict a typical layout. The dimensions and layouts have been taken from the planning drawings issued, however the dimensions are subject to change following the issue of working drawings. Furniture is used to indicate positioning only. For exact plot specification, details of external and internal finishes, dimensions and floor plan differences consult your sales executive. All dimensions are + or – 100mm and floor plans are not shown to scale.

3 BEDROOM APARTMENT
PLOTS 842, 848, 854, 860 & 866

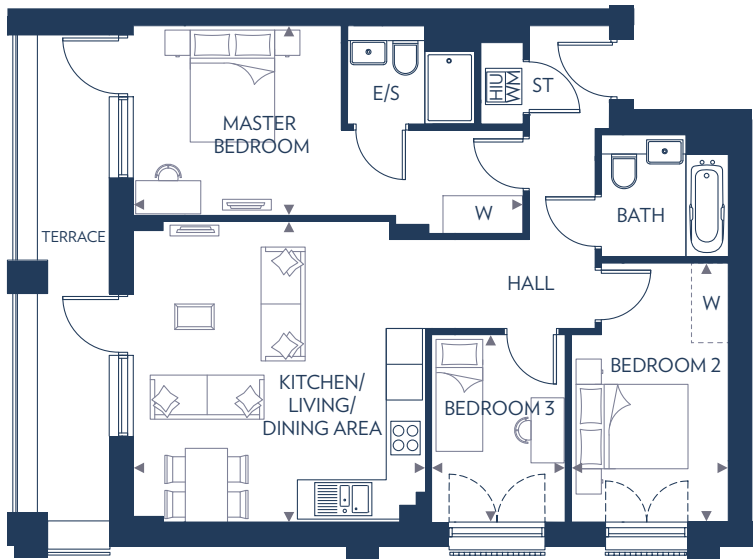
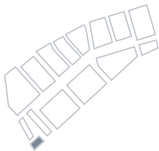


Kitchen/Living/Dining Area	
4.84m (max) 2.99m (min) x 4.28m (max) 3.33m (min)	15'10" (max) 9'9" (min) x 14'0" (max) 10'11" (min)
Master Bedroom	
3.89m x 3.27m	12'9" x 10'9"
Bedroom 2	
3.75m x 2.46m (max)	12'3" x 8'0" (max)
Bedroom 3	
3.00m x 2.37m	9'10" x 7'9"

E/S – En Suite
HIU – Heat Interface Unit
ST – Store
W – Wardrobe
WM – Washing Machine

These floor plans are indicative only and depict a typical layout. The dimensions and layouts have been taken from the planning drawings issued, however the dimensions are subject to change following the issue of working drawings. Furniture is used to indicate positioning only. For exact plot specification, details of external and internal finishes, dimensions and floor plan differences consult your sales executive. All dimensions are + or – 100mm and floor plans are not shown to scale.

3 BEDROOM APARTMENT
PLOTS 841, 847, 853, 859, 865, 871 & 876

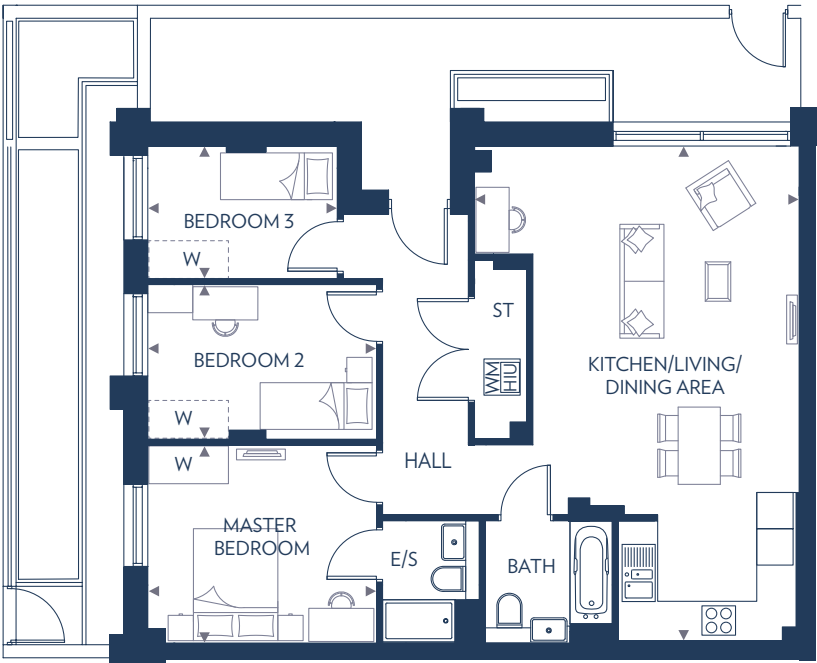
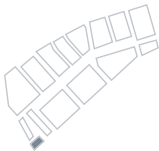


Kitchen/Living/Dining Area	16'3" x 15'10"
Master Bedroom	21'1" (max) x 10'3" (max)
Bedroom 2	14'0" x 8'6"
Bedroom 3	10'2" x 7'3"

E/S – En Suite
HIU – Heat Interface Unit
ST – Store
W – Wardrobe
WM – Washing Machine

These floor plans are indicative only and depict a typical layout. The dimensions and layouts have been taken from the planning drawings issued, however the dimensions are subject to change following the issue of working drawings. Furniture is used to indicate positioning only. For exact plot specification, details of external and internal finishes, dimensions and floor plan differences consult your sales executive. All dimensions are + or – 100mm and floor plans are not shown to scale.

3 BEDROOM APARTMENT
PLOT 839

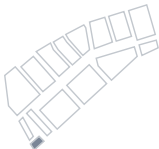


Kitchen/Living/Dining Area	26'8" x 17'7" (max)
Master Bedroom	12'4" x 10'8"
Bedroom 2	12'4" x 8'4"
Bedroom 3	10'3" x 7'2"

E/S – En Suite
HIU – Heat Interface Unit
ST – Store
W – Wardrobe
WM – Washing Machine

These floor plans are indicative only and depict a typical layout. The dimensions and layouts have been taken from the planning drawings issued, however the dimensions are subject to change following the issue of working drawings. Furniture is used to indicate positioning only. For exact plot specification, details of external and internal finishes, dimensions and floor plan differences consult your sales executive. All dimensions are + or – 100mm and floor plans are not shown to scale.

3 BEDROOM APARTMENT
PLOT 838

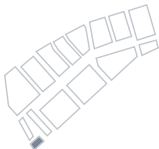


Kitchen/Living/Dining Area	8.11m (max) 4.82m (min) x 5.89m (max) 3.31m (min)	26'7" (max) 15'9" (min) x 19'4" (max) 10'10" (min)
Master Bedroom	3.96m x 3.27m	13'0" x 10'9"
Bedroom 2	3.78m x 2.55m	12'4" x 8'4"
Bedroom 3	3.13m x 2.17m	10'3" x 7'1"

E/S – En Suite
HIU – Heat Interface Unit
ST – Store
W – Wardrobe
WM – Washing Machine

These floor plans are indicative only and depict a typical layout. The dimensions and layouts have been taken from the planning drawings issued, however the dimensions are subject to change following the issue of working drawings. Furniture is used to indicate positioning only. For exact plot specification, details of external and internal finishes, dimensions and floor plan differences consult your sales executive. All dimensions are + or – 100mm and floor plans are not shown to scale.

3 BEDROOM APARTMENT
PLOTS 846, 852, 858, 864, 870, 875 & 880

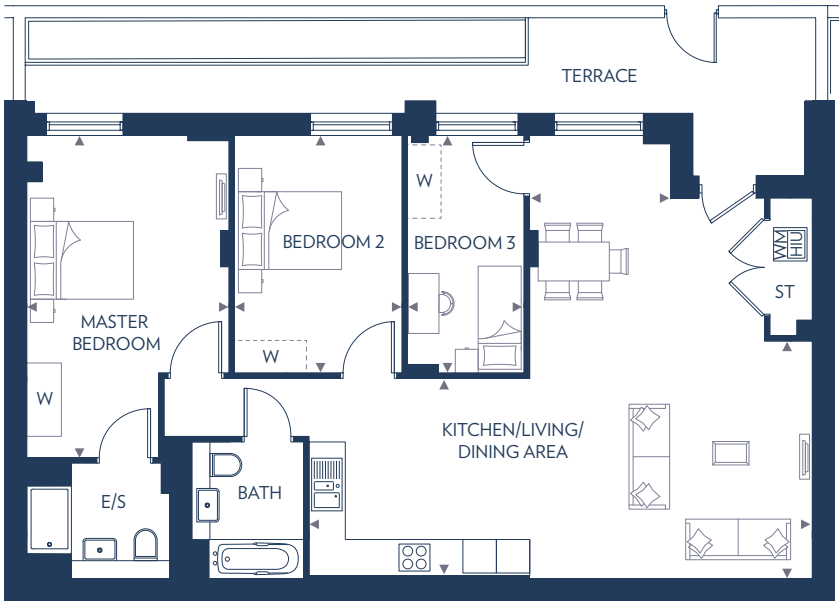
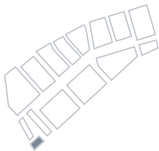


Kitchen/Living/Dining Area	8.13m (max) x 3.51m	26'8" (max) x 11'6"
Master Bedroom	3.83m x 3.80m	12'6" x 12'5"
Bedroom 2	3.83m x 2.45m	12'6" x 8'0"
Bedroom 3	3.83m x 2.29m	12'6" x 7'6"

E/S – En Suite
HIU – Heat Interface Unit
ST – Store
W – Wardrobe
WM – Washing Machine

These floor plans are indicative only and depict a typical layout. The dimensions and layouts have been taken from the planning drawings issued, however the dimensions are subject to change following the issue of working drawings. Furniture is used to indicate positioning only. For exact plot specification, details of external and internal finishes, dimensions and floor plan differences consult your sales executive. All dimensions are + or – 100mm and floor plans are not shown to scale.

3 BEDROOM APARTMENT
PLOT 840



Kitchen/Living/Dining Area	
9.02m (max) 2.54m (min) x 4.20m (max) 3.54m (min)	29'7" (max) 8'4" (min) x 13'9" (max) 11'7" (min)
Master Bedroom	
5.77m x 3.62m (max)	18'11" x 11'10" (max)
Bedroom 2	
4.25m x 3.00m	13'11" x 9'10"
Bedroom 3	
4.25m x 2.09m	13'11" x 6'10"

E/S – En Suite
HIU – Heat Interface Unit
ST – Store
W – Wardrobe
WM – Washing Machine

These floor plans are indicative only and depict a typical layout. The dimensions and layouts have been taken from the planning drawings issued, however the dimensions are subject to change following the issue of working drawings. Furniture is used to indicate positioning only. For exact plot specification, details of external and internal finishes, dimensions and floor plan differences consult your sales executive. All dimensions are + or – 100mm and floor plans are not shown to scale.



Seventh Floor



Sixth Floor



Fifth Floor



Fourth Floor



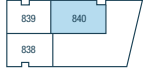
Third Floor



Second Floor



First Floor



Ground Floor



BUILT ON THE OLYMPIC LEGACY AND DESIGNED TO REVOLUTIONISE CITY LIVING



In accordance with the Consumer Protection from Unfair Trading Practices Regulations 2008, the information contained in this document is provided for general guidance only, and does not form the whole or any part of any offer or contract. These floor plans are indicative only and depict typical layouts. The dimensions and layouts have been taken from the planning drawings issued, however the dimensions are subject to change following the issue of working drawings. Furniture is used to indicate positioning only. For exact plot specification, details of external and internal finishes, dimensions and floor plan differences consult your sales executive. All dimensions are + or - 50mm and floor plans are not shown to scale. Customers are strongly advised to contact a Taylor Wimpey representative for further details and to satisfy themselves as to their accuracy. All information and computer representations contained in this document are taken from design intent material and may be subject to further design development. September 2020. Designed by Focus IMC.