



**CHOBHAM
MANOR**
E20

P H A S E 4

PRELIMINARY

**BE PART OF ONE
OF LONDON'S
MOST VIBRANT
NEW COMMUNITIES**

PHASE 4 DEVELOPMENT LAYOUT



CONTENTS

CRITERIUM HOUSE 1, 2 & 3 BEDROOM APARTMENTS	P 6
TRIATHLON POINT 1, 2 & 3 BEDROOM APARTMENTS	P 20
AUDAX HEIGHTS 1, 2 & 3 BEDROOM APARTMENTS	P 38

- CRITERIUM HOUSE**
PLOTS 720-774
- TRIATHLON POINT**
PLOTS 775-837
- AUDAX HEIGHTS**
PLOTS 838-880
- COMMERCIAL SPACE
ON GROUND FLOOR**

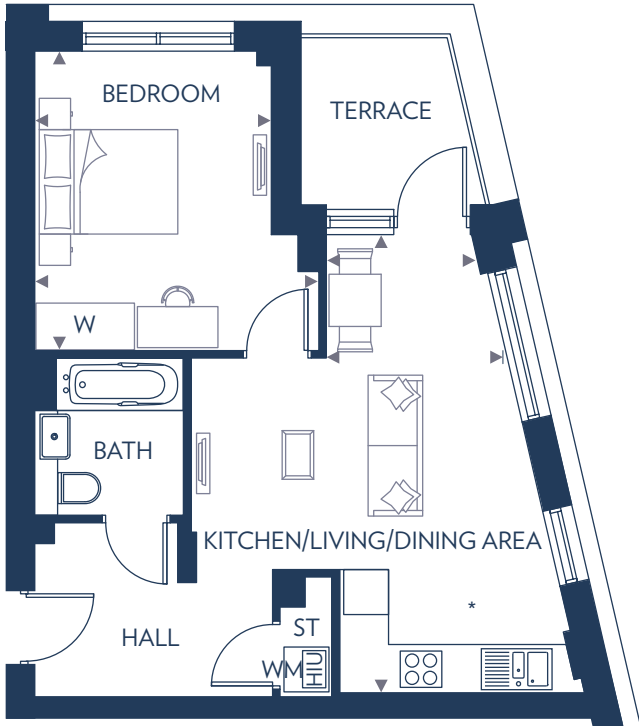
Development layout is indicative only and is subject to change. It is provided for general guidance only, it does not form the whole or any part of an offer or contract.



CRITERIUM HOUSE



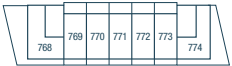
1 BEDROOM APARTMENT
PLOTS 737, 747, 757 & 767



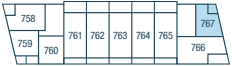
Kitchen/Living/Dining Area
6.10m x 2.41m (max) 1.93m (min) 20'0" x 7'11" (max) 6'4" (min)

Bedroom
4.00m x 3.81m (max) 3.17m (min) 13'1" x 12'6" (max) 10'5" (min)

HIU – Heat Interface Unit
ST – Store
W – Wardrobe
WM – Washing Machine



Fifth Floor



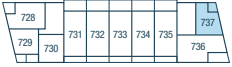
Fourth Floor



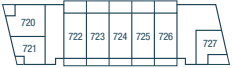
Third Floor



Second Floor



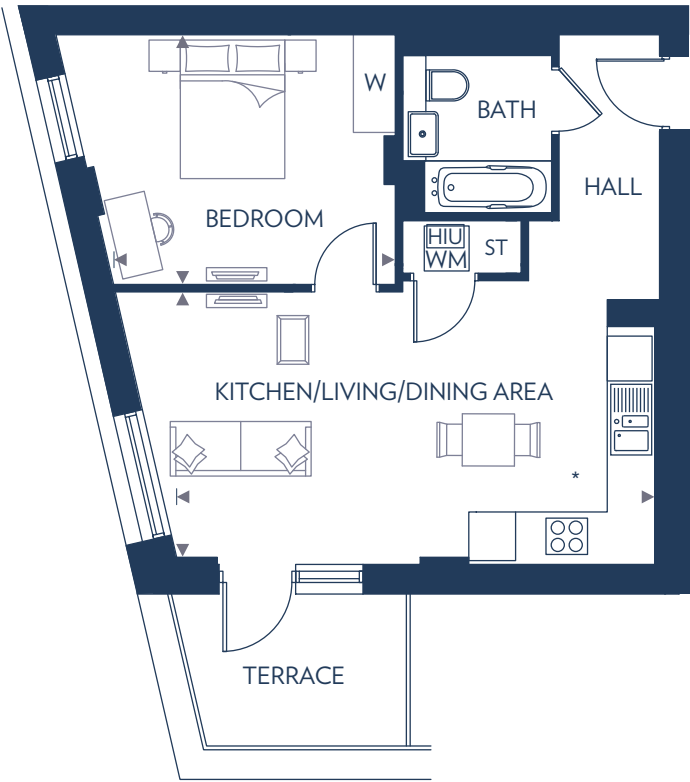
First Floor



Ground Floor

These floor plans are indicative only and depict a typical layout. The dimensions and layouts have been taken from the planning drawings issued, however the dimensions are subject to change following the issue of working drawings. Furniture is used to indicate positioning only. For exact plot specification, details of external and internal finishes, dimensions and floor plan differences consult your sales executive. All dimensions are + or – 100mm and floor plans are not shown to scale. *Kitchen layouts vary, please speak to a sales executive for details.

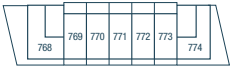
1 BEDROOM APARTMENT
PLOTS 729, 739, 749 & 759



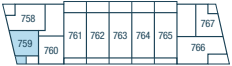
Kitchen/Living/Dining Area
6.37m x 3.64m 20'11" x 11'11"

Bedroom
3.76m x 3.33m 12'4" x 10'11"

HIU – Heat Interface Unit
ST – Store
W – Wardrobe
WM – Washing Machine



Fifth Floor



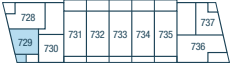
Fourth Floor



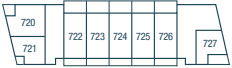
Third Floor



Second Floor



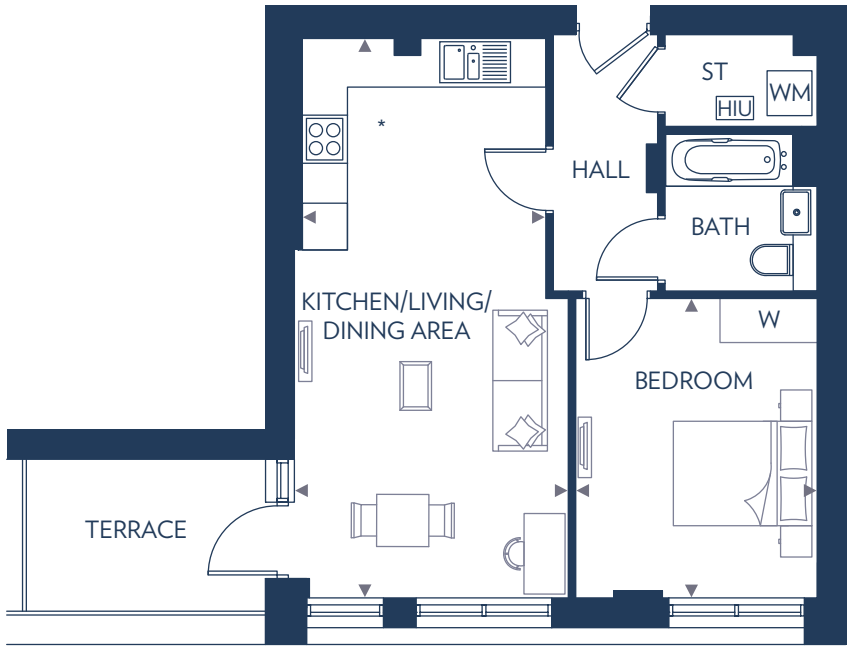
First Floor



Ground Floor

These floor plans are indicative only and depict a typical layout. The dimensions and layouts have been taken from the planning drawings issued, however the dimensions are subject to change following the issue of working drawings. Furniture is used to indicate positioning only. For exact plot specification, details of external and internal finishes, dimensions and floor plan differences consult your sales executive. All dimensions are + or – 100mm and floor plans are not shown to scale. *Kitchen layouts vary, please speak to a sales executive for details.

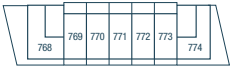
1 BEDROOM APARTMENT
PLOTS 730, 740, 750 & 760



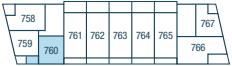
Kitchen/Living/Dining Area
7.45m x 3.65m (max) 3.28m (min) 24'5" x 11'11" (max) 10'9" (min)

Bedroom
4.00m x 3.20m 13'1" x 10'6"

HIU – Heat Interface Unit
ST – Store
W – Wardrobe
WM – Washing Machine



Fifth Floor



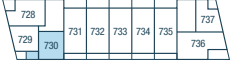
Fourth Floor



Third Floor



Second Floor



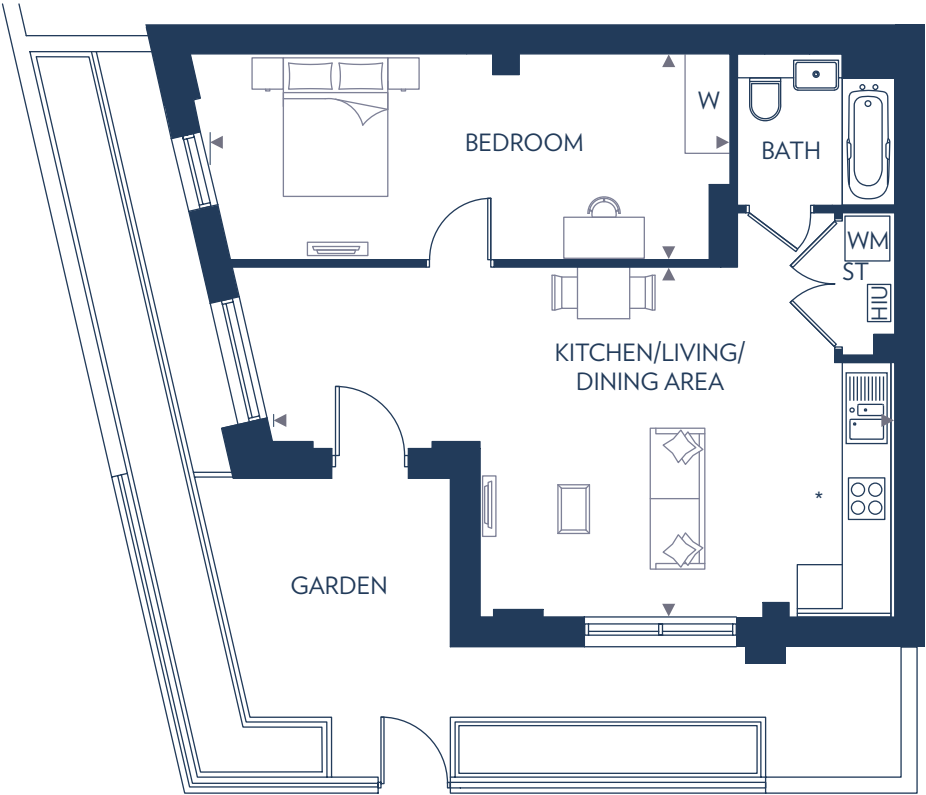
First Floor



Ground Floor

These floor plans are indicative only and depict a typical layout. The dimensions and layouts have been taken from the planning drawings issued, however the dimensions are subject to change following the issue of working drawings. Furniture is used to indicate positioning only. For exact plot specification, details of external and internal finishes, dimensions and floor plan differences consult your sales executive. All dimensions are + or – 100mm and floor plans are not shown to scale. *Kitchen layouts vary, please speak to a sales executive for details.

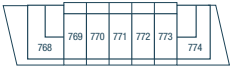
1 BEDROOM APARTMENT
PLOT 721



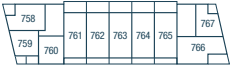
Kitchen/Living/Dining Area
5.46m x 4.67m 17'11" x 15'4"

Bedroom
6.99m x 2.75m 22'11" x 9'0"

HIU – Heat Interface Unit
ST – Store
W – Wardrobe
WM – Washing Machine



Fifth Floor



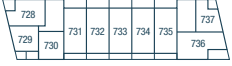
Fourth Floor



Third Floor



Second Floor



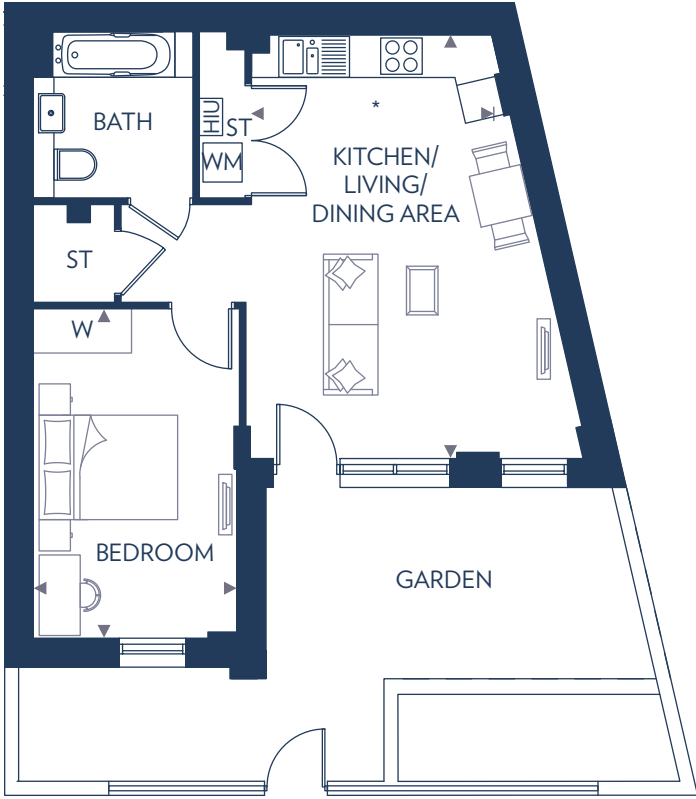
First Floor



Ground Floor

These floor plans are indicative only and depict a typical layout. The dimensions and layouts have been taken from the planning drawings issued, however the dimensions are subject to change following the issue of working drawings. Furniture is used to indicate positioning only. For exact plot specification, details of external and internal finishes, dimensions and floor plan differences consult your sales executive. All dimensions are + or – 100mm and floor plans are not shown to scale. *Kitchen layout may vary, please speak to a sales executive for details.

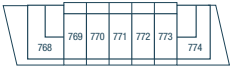
1 BEDROOM APARTMENT
PLOT 727



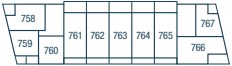
Kitchen/Living/Dining Area
6.47m x 3.67m 21'2" x 12'0"

Bedroom
5.05m x 3.17m 16'6" x 10'5"

HIU – Heat Interface Unit
ST – Store
W – Wardrobe
WM – Washing Machine



Fifth Floor



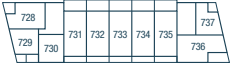
Fourth Floor



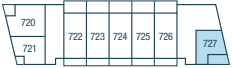
Third Floor



Second Floor

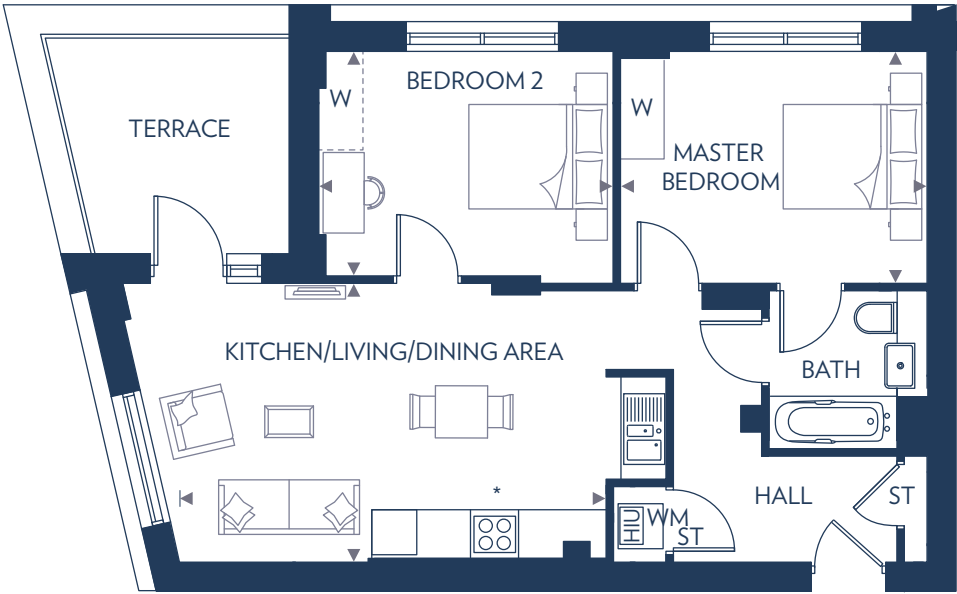


First Floor



Ground Floor

2 BEDROOM APARTMENT
PLOTS 728, 738, 748 & 758

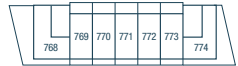


Kitchen/Living/Dining Area
5.70m x 3.72m 18'8" x 12'2"

Master Bedroom
4.09m x 3.10m 13'5" x 10'2"

Bedroom 2
3.93m x 3.10m 12'10" x 10'2"

HIU – Heat Interface Unit
ST – Store
W – Wardrobe
WM – Washing Machine



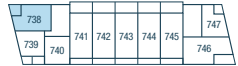
Fifth Floor



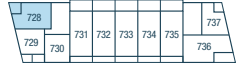
Fourth Floor



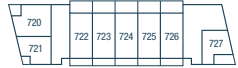
Third Floor



Second Floor



First Floor

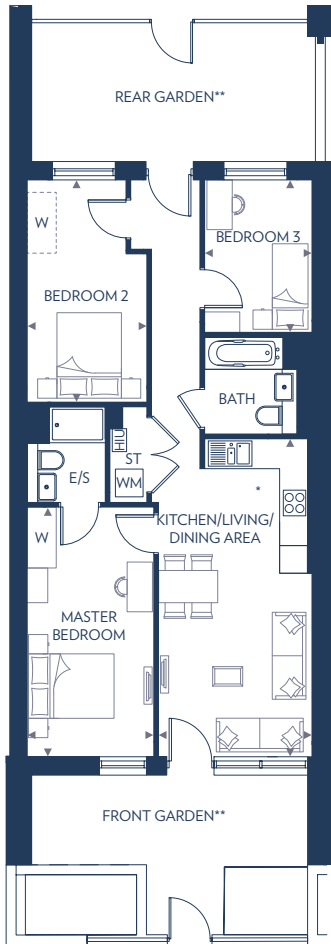


Ground Floor

These floor plans are indicative only and depict a typical layout. The dimensions and layouts have been taken from the planning drawings issued, however the dimensions are subject to change following the issue of working drawings. Furniture is used to indicate positioning only. For exact plot specification, details of external and internal finishes, dimensions and floor plan differences consult your sales executive. All dimensions are + or – 100mm and floor plans are not shown to scale. *Kitchen layout may vary, please speak to a sales executive for details.

These floor plans are indicative only and depict a typical layout. The dimensions and layouts have been taken from the planning drawings issued, however the dimensions are subject to change following the issue of working drawings. Furniture is used to indicate positioning only. For exact plot specification, details of external and internal finishes, dimensions and floor plan differences consult your sales executive. All dimensions are + or – 100mm and floor plans are not shown to scale. *Kitchen layouts vary, please speak to a sales executive for details.

3 BEDROOM APARTMENT
PLOTS 722-726, 731-735, 741-745,
751-755, 761-765 & 769-773



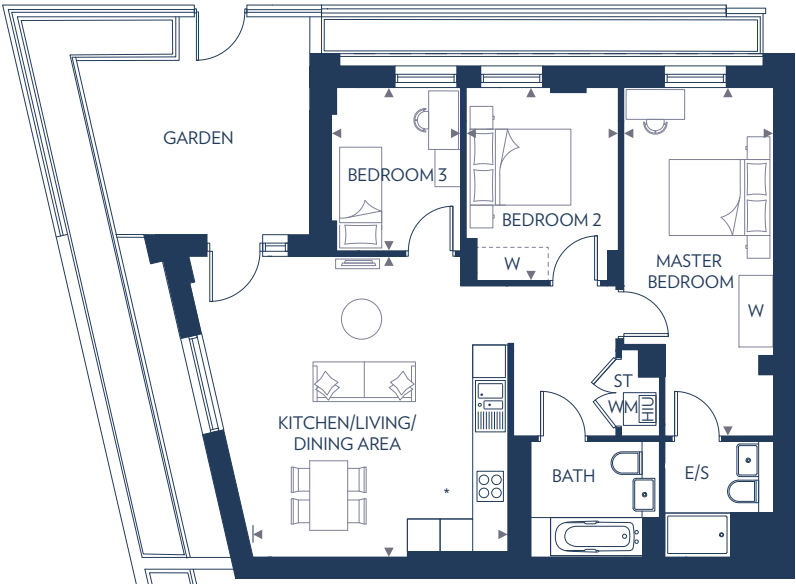
Kitchen/Living/Dining Area	
6.88m x 3.32m	22'7" x 10'10"
Master Bedroom	
5.37m x 2.75m	17'7" x 9'0"
Bedroom 2	
4.81m (max) x 2.60m (max)	15'9" (max) x 8'6" (max)
Bedroom 3	
3.30m x 2.32m	10'9" x 7'7"

E/S – En Suite
HIU – Heat Interface Unit
ST – Store
W – Wardrobe
WM – Washing Machine



These floor plans are indicative only and depict a typical layout. The dimensions and layouts have been taken from the planning drawings issued, however the dimensions are subject to change following the issue of working drawings. Furniture is used to indicate positioning only. For exact plot specification, details of external and internal finishes, dimensions and floor plan differences consult your sales executive. All dimensions are + or – 100mm and floor plans are not shown to scale. *Kitchen layouts vary, please speak to a sales executive for details. **Balcony to plots on first, second, third, fourth and fifth floor.

3 BEDROOM APARTMENT
PLOT 720



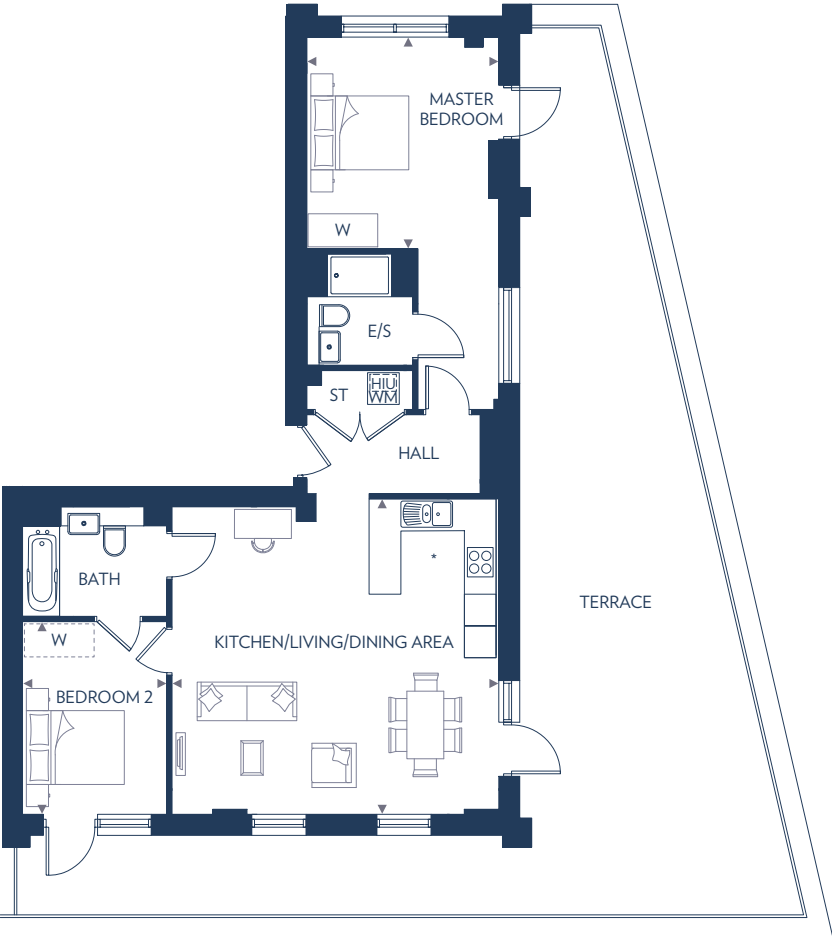
Kitchen/Living/Dining Area	
5.52m x 4.68m	18'1" x 15'4"
Master Bedroom	
6.42m x 2.75m (max)	21'1" x 9'0"
Bedroom 2	
3.54m x 2.79m	11'7" x 9'2"
Bedroom 3	
3.00m x 2.37m	9'10" x 7'9"

E/S – En Suite
HIU – Heat Interface Unit
ST – Store
W – Wardrobe
WM – Washing Machine



These floor plans are indicative only and depict a typical layout. The dimensions and layouts have been taken from the planning drawings issued, however the dimensions are subject to change following the issue of working drawings. Furniture is used to indicate positioning only. For exact plot specification, details of external and internal finishes, dimensions and floor plan differences consult your sales executive. All dimensions are + or – 100mm and floor plans are not shown to scale. *Kitchen layout may vary, please speak to a sales executive for details.

2 BEDROOM APARTMENT
PLOT 774

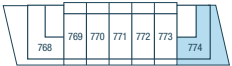


Kitchen/Living/Dining Area
6.17m x 5.96m (max) 20'3" x 19'6" (max)

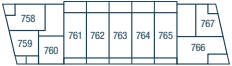
Master Bedroom
4.00m x 3.62m (max) 13'1" x 11'10" (max)

Bedroom 2
3.64m x 2.72m 11'11" x 8'11"

E/S – En Suite
HIU – Heat Interface Unit
ST – Store
W – Wardrobe
WM – Washing Machine



Fifth Floor



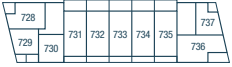
Fourth Floor



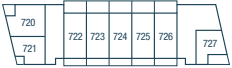
Third Floor



Second Floor



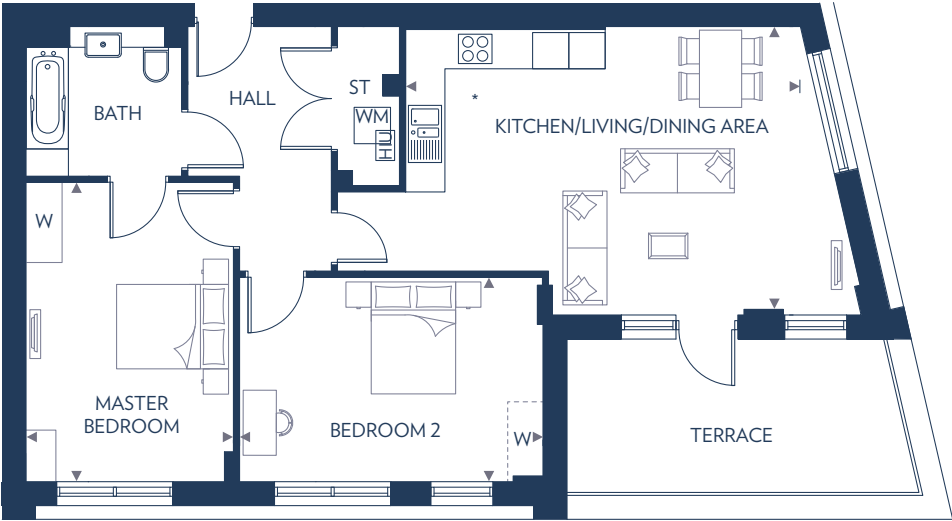
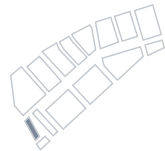
First Floor



Ground Floor

These floor plans are indicative only and depict a typical layout. The dimensions and layouts have been taken from the planning drawings issued, however the dimensions are subject to change following the issue of working drawings. Furniture is used to indicate positioning only. For exact plot specification, details of external and internal finishes, dimensions and floor plan differences consult your sales executive. All dimensions are + or – 100mm and floor plans are not shown to scale. *Kitchen layout may vary, please speak to a sales executive for details.

2 BEDROOM APARTMENT
PLOTS 736, 746, 756 & 766

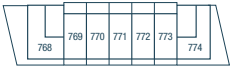


Kitchen/Living/Dining Area
6.52m x 4.77m 21'4" x 15'7"

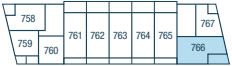
Master Bedroom
4.95m x 3.40m 16'2" x 11'2"

Bedroom 2
5.01m x 3.38m 16'5" x 11'1"

E/S – En Suite
HIU – Heat Interface Unit
ST – Store
W – Wardrobe
WM – Washing Machine



Fifth Floor



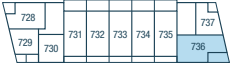
Fourth Floor



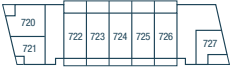
Third Floor



Second Floor



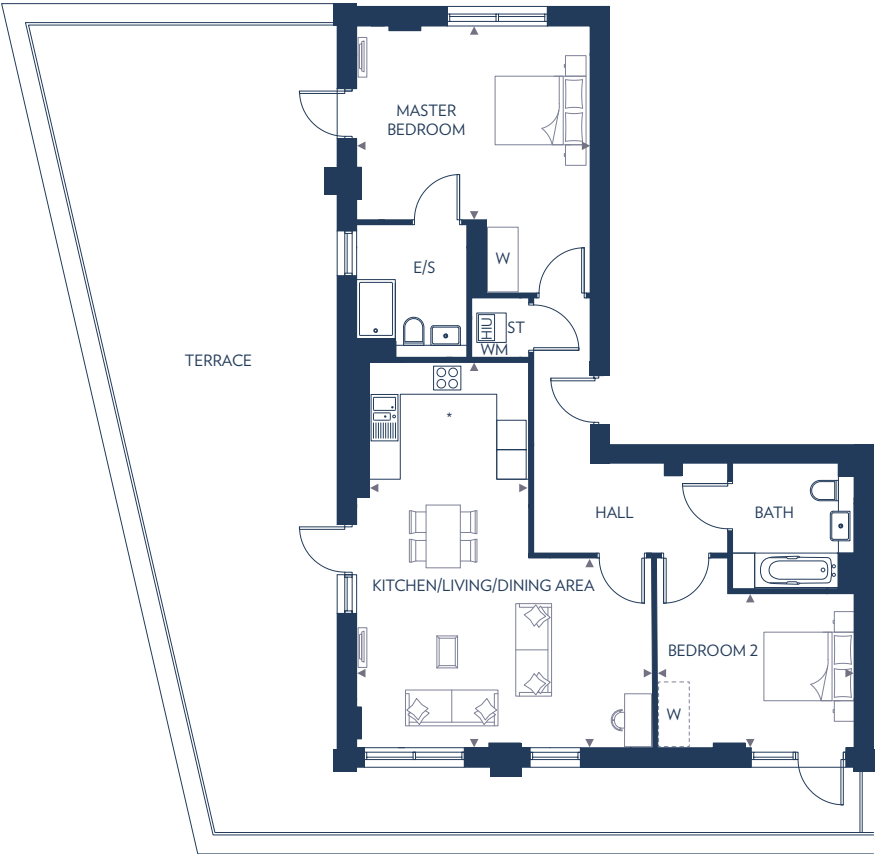
First Floor



Ground Floor

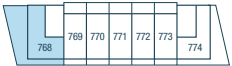
These floor plans are indicative only and depict a typical layout. The dimensions and layouts have been taken from the planning drawings issued, however the dimensions are subject to change following the issue of working drawings. Furniture is used to indicate positioning only. For exact plot specification, details of external and internal finishes, dimensions and floor plan differences consult your sales executive. All dimensions are + or – 100mm and floor plans are not shown to scale. *Kitchen layouts vary, please speak to a sales executive for details.

2 BEDROOM APARTMENT
PLOT 768

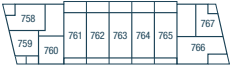


Kitchen/Living/Dining Area	
7.84m (max) 3.86m (min) x 6.05m (max) 3.50m (min)	25'8" (max) 12'8" (min) x 19'10" (max) 11'5" (min)
Master Bedroom	
4.75m x 3.94m	15'7" x 12'11"
Bedroom 2	
3.97m x 3.13m	13'0" x 10'3"

E/S – En Suite
HIU – Heat Interface Unit
ST – Store
W – Wardrobe
WM – Washing Machine



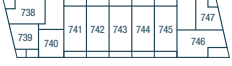
Fifth Floor



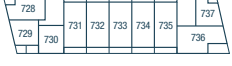
Fourth Floor



Third Floor



Second Floor



First Floor



Ground Floor

These floor plans are indicative only and depict a typical layout. The dimensions and layouts have been taken from the planning drawings issued, however the dimensions are subject to change following the issue of working drawings. Furniture is used to indicate positioning only. For exact plot specification, details of external and internal finishes, dimensions and floor plan differences consult your sales executive. All dimensions are + or - 100mm and floor plans are not shown to scale. *Kitchen layout may vary, please speak to a sales executive for details.



TRIATHLON POINT



1 BEDROOM APARTMENT
PLOTS 779, 790 & 805



Fifth Floor



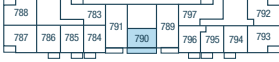
Fourth Floor



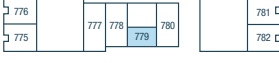
Third Floor



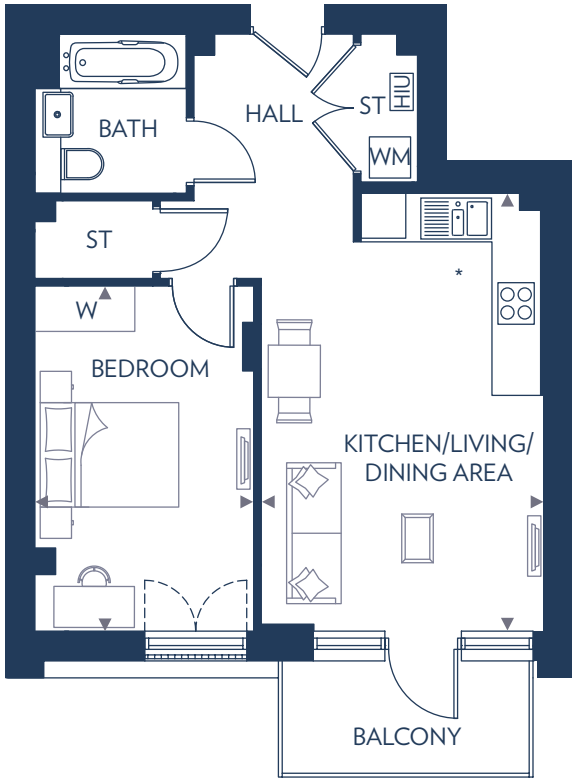
Second Floor



First Floor



1 BEDROOM APARTMENT
PLOTS 785, 795, 800 & 810



Fifth Floor



Fourth Floor



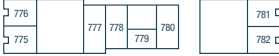
Third Floor



Second Floor



First Floor



Ground Floor

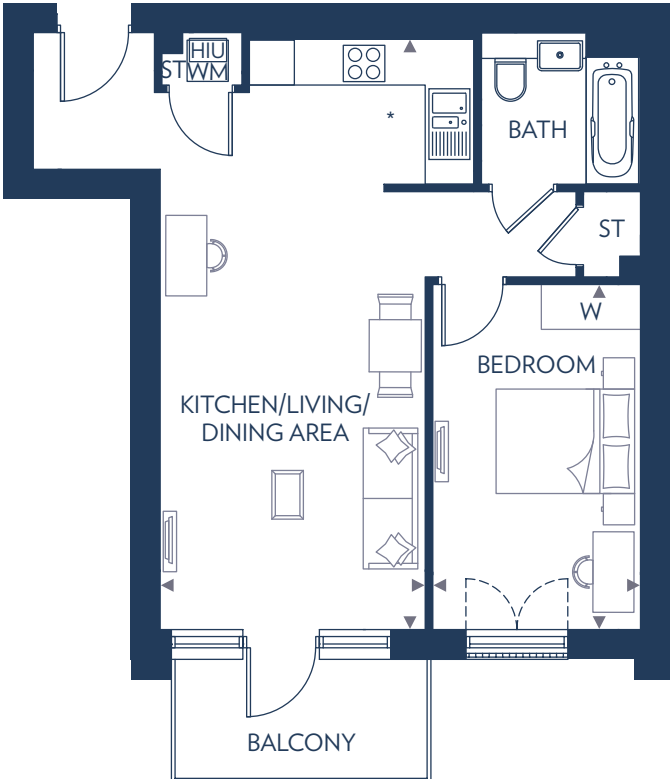
Kitchen/Living/Dining Area
5.82m x 3.78m 19'1" x 12'4"

Bedroom
4.61m x 2.92m 15'1" x 9'7"

HIU – Heat Interface Unit
ST – Store
W – Wardrobe
WM – Washing Machine

These floor plans are indicative only and depict a typical layout. The dimensions and layouts have been taken from the planning drawings issued, however the dimensions are subject to change following the issue of working drawings. Furniture is used to indicate positioning only. For exact plot specification, details of external and internal finishes, dimensions and floor plan differences consult your sales executive. All dimensions are + or – 100mm and floor plans are not shown to scale. Plots 795 & 810 are handed. *Kitchen layouts vary, please speak to a sales executive for details.

1 BEDROOM APARTMENT
PLOTS 784, 796, 799 & 811



Fifth Floor



Fourth Floor



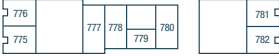
Third Floor



Second Floor



First Floor



Ground Floor

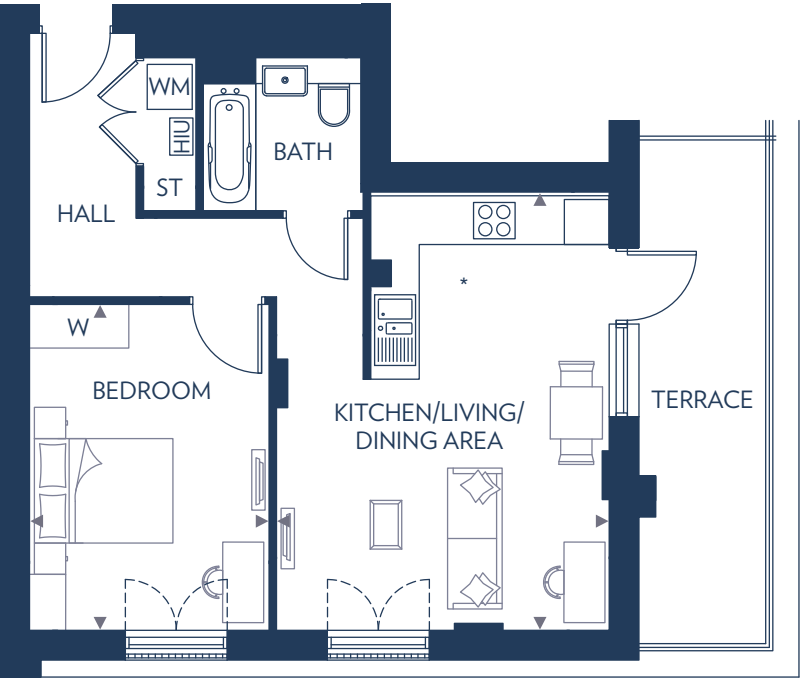
Kitchen/Living/Dining Area
7.90m x 3.54m 25'11" x 11'7"

Bedroom
4.61m x 2.77m 15'1" x 9'1"

HIU – Heat Interface Unit
ST – Store
W – Wardrobe
WM – Washing Machine

These floor plans are indicative only and depict a typical layout. The dimensions and layouts have been taken from the planning drawings issued, however the dimensions are subject to change following the issue of working drawings. Furniture is used to indicate positioning only. For exact plot specification, details of external and internal finishes, dimensions and floor plan differences consult your sales executive. All dimensions are + or – 100mm and floor plans are not shown to scale. Plots 796 & 811 are handed. *Kitchen layouts vary, please speak to a sales executive for details.

1 BEDROOM APARTMENT
PLOTS 829 & 836



Fifth Floor



Fourth Floor



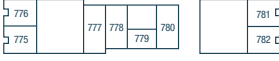
Third Floor



Second Floor



First Floor



Ground Floor

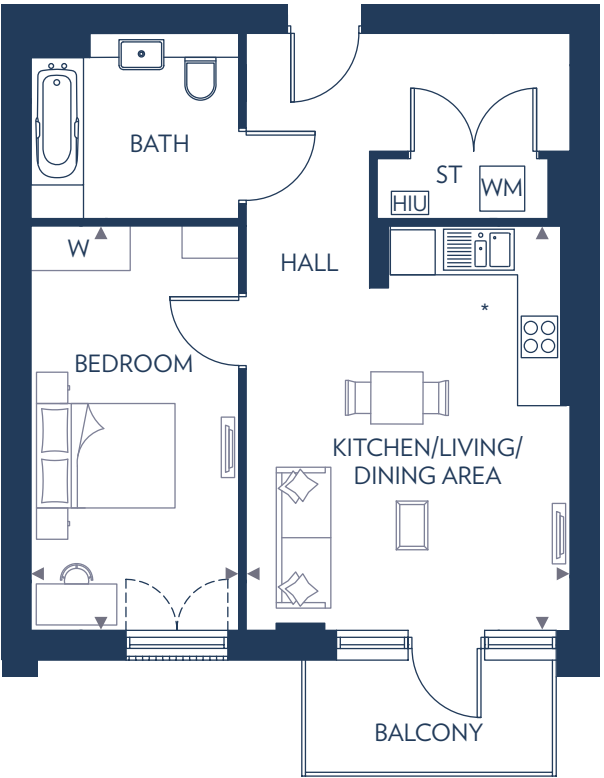
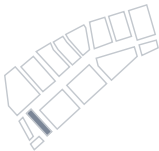
Kitchen/Living/Dining Area
5.78m x 4.44m (max) 18'11" x 14'7" (max)

Bedroom
4.35m x 3.20m 14'3" x 10'6"

HIU – Heat Interface Unit
ST – Store
W – Wardrobe
WM – Washing Machine

These floor plans are indicative only and depict a typical layout. The dimensions and layouts have been taken from the planning drawings issued, however the dimensions are subject to change following the issue of working drawings. Furniture is used to indicate positioning only. For exact plot specification, details of external and internal finishes, dimensions and floor plan differences consult your sales executive. All dimensions are + or – 100mm and floor plans are not shown to scale. Plot 836 is handed. *Kitchen layouts vary, please speak to a sales executive for details.

1 BEDROOM APARTMENT
PLOTS 786, 794, 801, 809,
815, 820, 825, 830 & 835



Fifth Floor



Fourth Floor



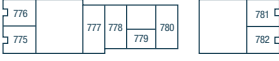
Third Floor



Second Floor



First Floor



Ground Floor

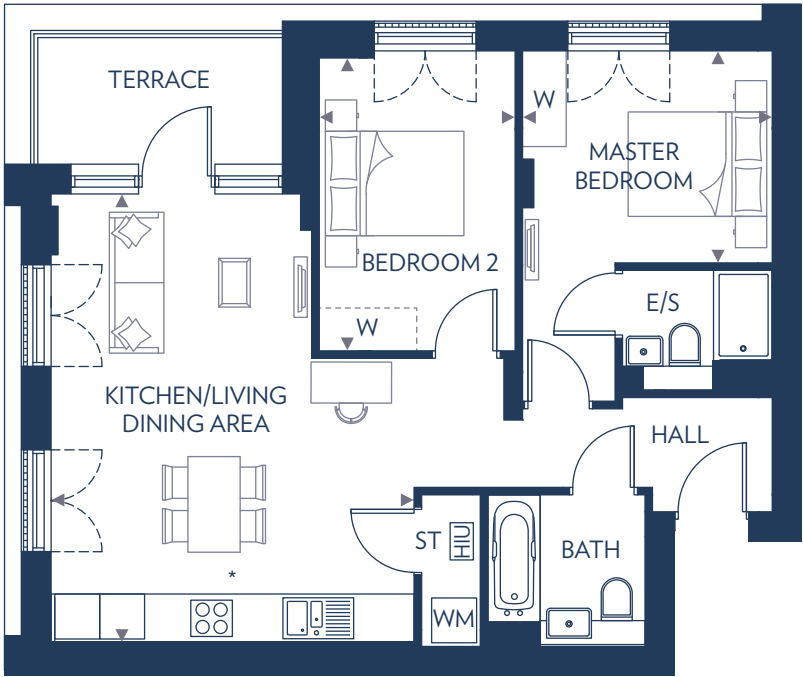
Kitchen/Living/Dining Area
5.40m x 4.32m 17'8" x 14'2"

Bedroom
5.40m x 2.77m 17'8" x 9'1"

HIU – Heat Interface Unit
ST – Store
W – Wardrobe
WM – Washing Machine

These floor plans are indicative only and depict a typical layout. The dimensions and layouts have been taken from the planning drawings issued, however the dimensions are subject to change following the issue of working drawings. Furniture is used to indicate positioning only. For exact plot specification, details of external and internal finishes, dimensions and floor plan differences consult your sales executive. All dimensions are + or – 100mm and floor plans are not shown to scale. Plots 794, 809, 820 & 830 are handed. *Kitchen layouts vary, please speak to a sales executive for details.

2 BEDROOM APARTMENT
PLOTS 788, 792, 803, 807, 817, 818 & 827



Fifth Floor



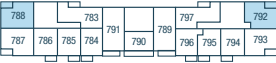
Fourth Floor



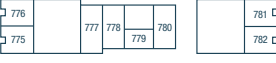
Third Floor



Second Floor



First Floor



Ground Floor

Kitchen/Living/Dining Area
5.96m x 4.85m (max) 19'7" x 15'10" (max)

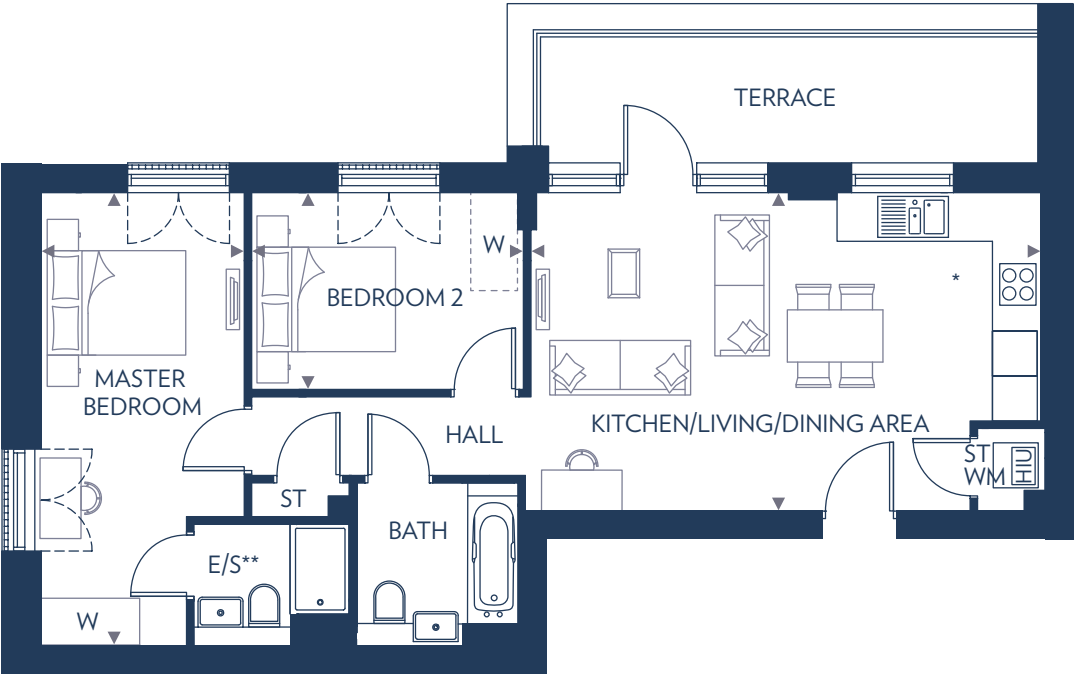
Master Bedroom
3.33m x 2.83m 10'11" x 9'3"

Bedroom 2
3.91m x 2.61m 12'10" x 8'7"

E/S – En Suite
HIU – Heat Interface Unit
ST – Store
W – Wardrobe
WM – Washing Machine

These floor plans are indicative only and depict a typical layout. The dimensions and layouts have been taken from the planning drawings issued, however the dimensions are subject to change following the issue of working drawings. Furniture is used to indicate positioning only. For exact plot specification, details of external and internal finishes, dimensions and floor plan differences consult your sales executive. All dimensions are + or – 100mm and floor plans are not shown to scale. Plots 792, 807 & 818 are handed. *Kitchen layouts vary, please speak to a sales executive for details.

2 BEDROOM APARTMENT
PLOTS 832 & 833



Fifth Floor



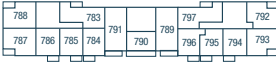
Fourth Floor



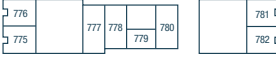
Third Floor



Second Floor



First Floor



Ground Floor

Kitchen/Living/Dining Area
6.79m x 4.25m 22'3" x 13'11"

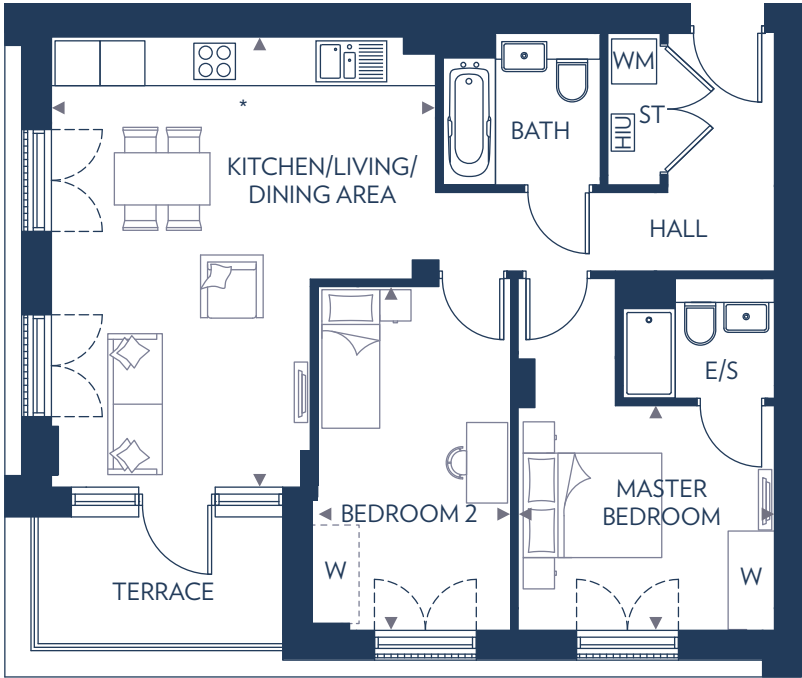
Master Bedroom
6.05m x 2.71m (max) 19'10" x 8'10" (max)

Bedroom 2
3.63m x 2.62m 11'10" x 8'7"

E/S – En Suite
HIU – Heat Interface Unit
ST – Store
W – Wardrobe
WM – Washing Machine

These floor plans are indicative only and depict a typical layout. The dimensions and layouts have been taken from the planning drawings issued, however the dimensions are subject to change following the issue of working drawings. Furniture is used to indicate positioning only. For exact plot specification, details of external and internal finishes, dimensions and floor plan differences consult your sales executive. All dimensions are + or – 100mm and floor plans are not shown to scale. Plot 833 is handed. *Kitchen layout may vary, please speak to a sales executive for details. **Layout of en suite varies. Please speak to a sales executive for details.

2 BEDROOM APARTMENT
PLOTS 787, 793, 802, 808, 816, 819 & 826



Kitchen/Living/Dining Area
5.98m x 5.13m (max) 19'7" x 16'10" (max)

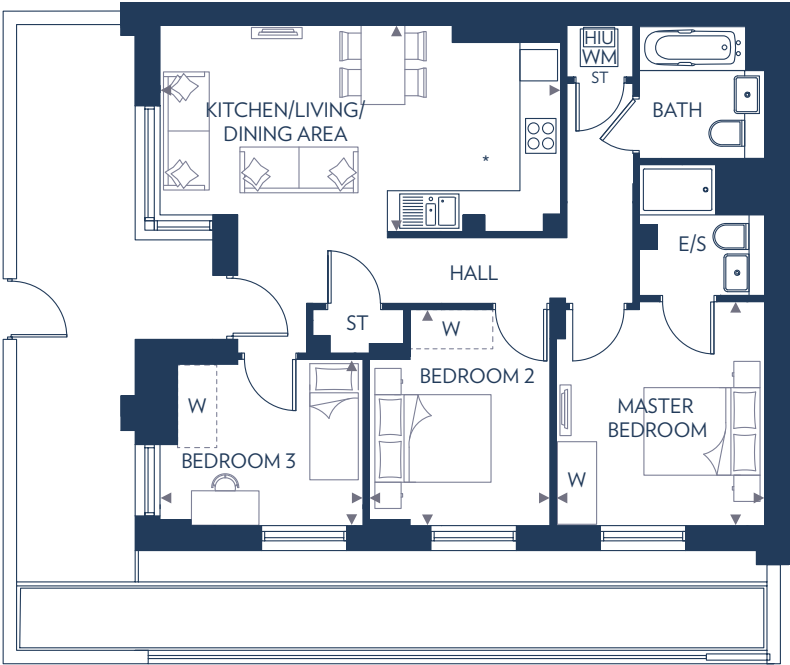
Master Bedroom
3.42m (max) x 3.00m 11'2" (max) x 9'10"

Bedroom 2
4.59m x 2.64m 15'0" x 8'8"

E/S – En Suite
HIU – Heat Interface Unit
ST – Store
W – Wardrobe
WM – Washing Machine

These floor plans are indicative only and depict a typical layout. The dimensions and layouts have been taken from the planning drawings issued, however the dimensions are subject to change following the issue of working drawings. Furniture is used to indicate positioning only. For exact plot specification, details of external and internal finishes, dimensions and floor plan differences consult your sales executive. All dimensions are + or – 100mm and floor plans are not shown to scale. Plots 793, 808 & 819 are handed. Dimensions to plots vary, please refer to customer plans. *Kitchen layouts vary, please speak to a sales executive for details.

3 BEDROOM APARTMENT
PLOTS 775, 776, 781 & 782



Kitchen/Living/Dining Area
6.38m x 3.28m 20'11" x 10'9"

Master Bedroom
3.55m x 3.32m 11'7" x 10'10"

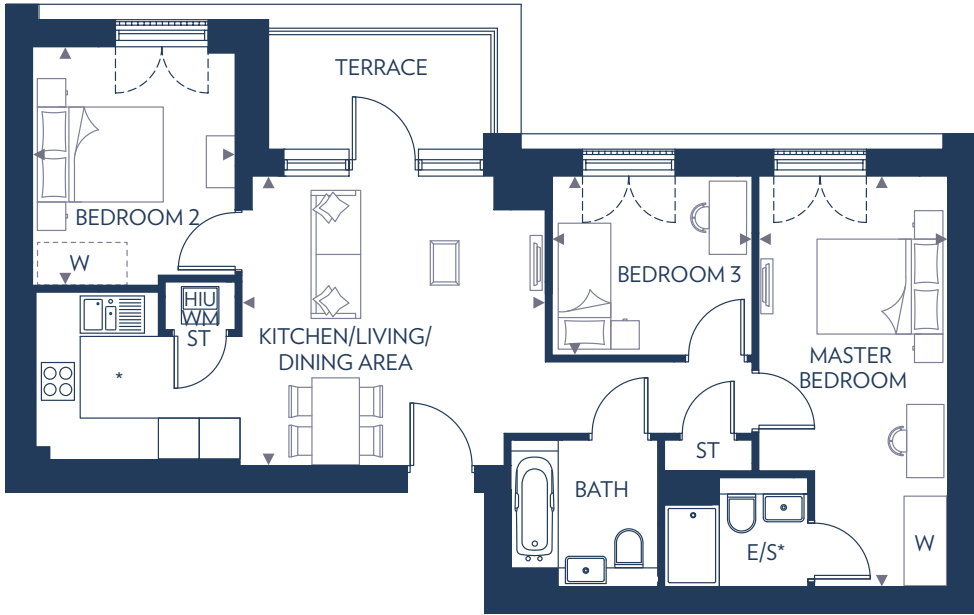
Bedroom 2
3.44m x 2.87m 11'3" x 9'5"

Bedroom 3
3.23m x 2.65m (max) 10'7" x 8'8" (max)

E/S – En Suite
HIU – Heat Interface Unit
ST – Store
W – Wardrobe
WM – Washing Machine

These floor plans are indicative only and depict a typical layout. The dimensions and layouts have been taken from the planning drawings issued, however the dimensions are subject to change following the issue of working drawings. Furniture is used to indicate positioning only. For exact plot specification, details of external and internal finishes, dimensions and floor plan differences consult your sales executive. All dimensions are + or – 100mm and floor plans are not shown to scale. Plots 781 & 782 are handed. *Kitchen sizes and layout may vary, please speak to a sales executive.

3 BEDROOM APARTMENT
PLOTS 783, 797, 798, 812, 813, 822 & 823

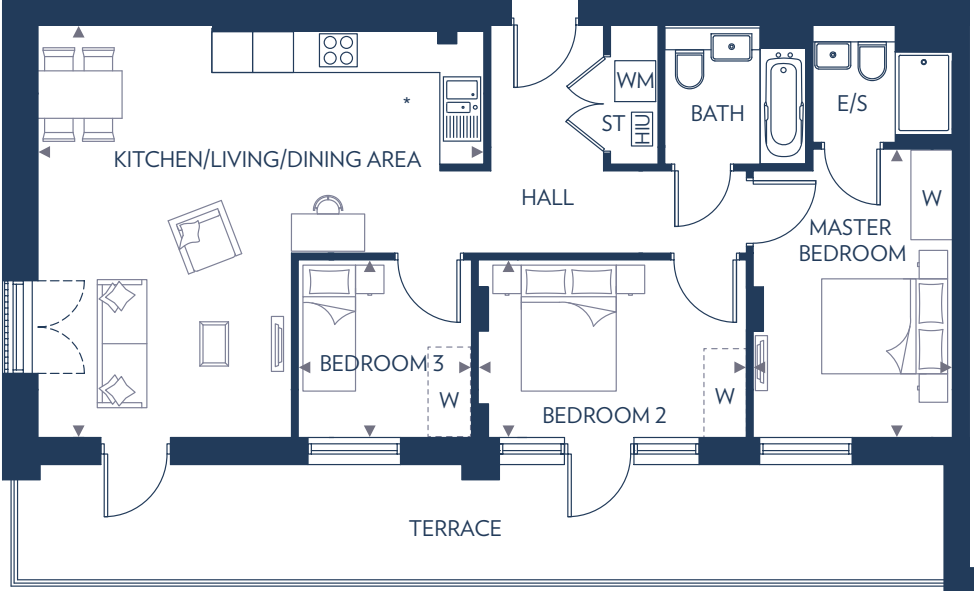


Kitchen/Living/Dining Area	4.45m x 4.25m	14'7" x 13'11"
Master Bedroom	6.05m x 2.77m (max)	19'10" x 9'1" (max)
Bedroom 2	3.50m x 2.97m	11'6" x 9'9"
Bedroom 3	2.93m x 2.62m	9'7" x 8'7"

E/S – En Suite
HIU – Heat Interface Unit
ST – Store
W – Wardrobe
WM – Washing Machine

These floor plans are indicative only and depict a typical layout. The dimensions and layouts have been taken from the planning drawings issued, however the dimensions are subject to change following the issue of working drawings. Furniture is used to indicate positioning only. For exact plot specification, details of external and internal finishes, dimensions and floor plan differences consult your sales executive. All dimensions are + or – 100mm and floor plans are not shown to scale. Plots 797, 812 & 822 are handed. *Kitchen layouts vary, please speak to a sales executive for details.

3 BEDROOM APARTMENT
PLOTS 831 & 834

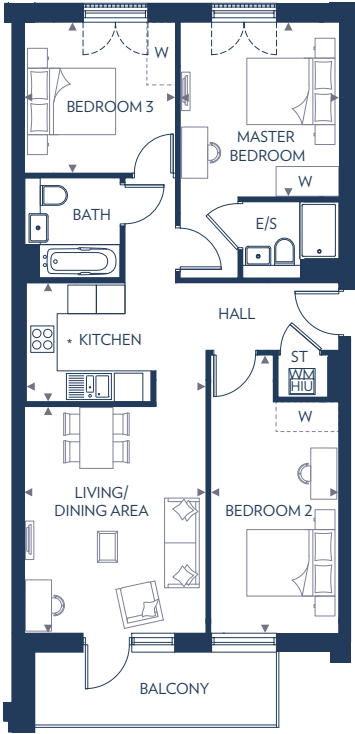


Kitchen/Living/Dining Area	6.55m (max) x 6.06m (max)	21'6" (max) x 19'10" (max)
Master Bedroom	4.23m x 2.92m	13'10" x 9'7"
Bedroom 2	3.94m x 2.60m	12'11" x 8'6"
Bedroom 3	2.60m x 2.54m	8'6" x 8'4"

E/S – En Suite
HIU – Heat Interface Unit
ST – Store
W – Wardrobe
WM – Washing Machine

These floor plans are indicative only and depict a typical layout. The dimensions and layouts have been taken from the planning drawings issued, however the dimensions are subject to change following the issue of working drawings. Furniture is used to indicate positioning only. For exact plot specification, details of external and internal finishes, dimensions and floor plan differences consult your sales executive. All dimensions are + or – 100mm and floor plans are not shown to scale. *Kitchen layouts vary, please speak to a sales executive for details.

3 BEDROOM APARTMENT
PLOTS 789, 791, 804 & 806



Kitchen	
3.82m x 2.50m	12'6" x 8'2"
Living/Dining Area	
4.75m x 3.82m	15'7" x 12'6"
Master Bedroom	
3.66m x 3.30m	12'0" x 10'10"
Bedroom 2	
5.84m (max) x 2.68m (max)	19'2" (max) x 8'9" (max)
Bedroom 3	
3.18m x 3.16m	10'5" x 10'4"

E/S – En Suite
HIU – Heat Interface Unit
ST – Store
W – Wardrobe
WM – Washing Machine



Fifth Floor



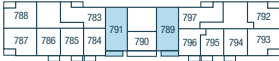
Fourth Floor



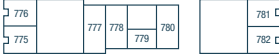
Third Floor



Second Floor



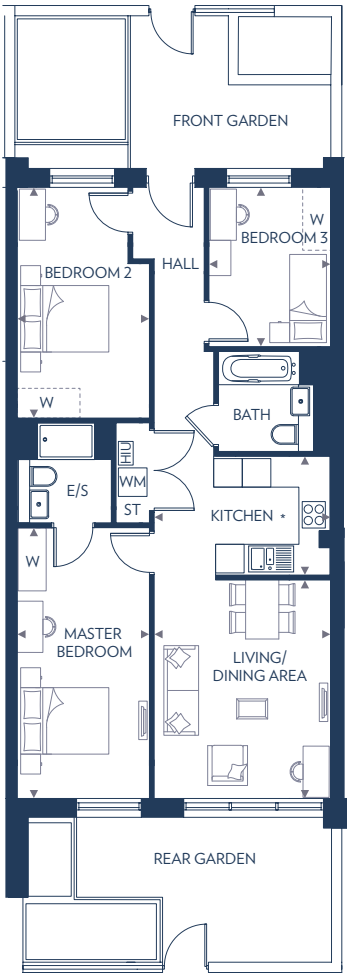
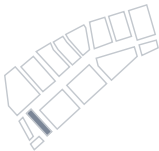
First Floor



Ground Floor

These floor plans are indicative only and depict a typical layout. The dimensions and layouts have been taken from the planning drawings issued, however the dimensions are subject to change following the issue of working drawings. Furniture is used to indicate positioning only. For exact plot specification, details of external and internal finishes, dimensions and floor plan differences consult your sales executive. All dimensions are + or – 100mm and floor plans are not shown to scale. Plots 789 & 804 are handed. *Kitchen layouts vary, please speak to a sales executive for details.

3 BEDROOM APARTMENT
PLOTS 778 & 780



Kitchen	
3.73m x 2.50m	12'3" x 8'2"
Living/Dining Area	
4.58m x 3.73m	15'0" x 12'3"
Master Bedroom	
5.68m x 2.77m	18'7" x 9'1"
Bedroom 2	
4.84m (max) x 2.77m (max)	15'10" (max) x 9'1" (max)
Bedroom 3	
3.34m x 2.56m	10'11" x 8'4"

E/S – En Suite
HIU – Heat Interface Unit
ST – Store
W – Wardrobe
WM – Washing Machine



Fifth Floor



Fourth Floor



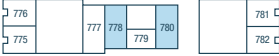
Third Floor



Second Floor



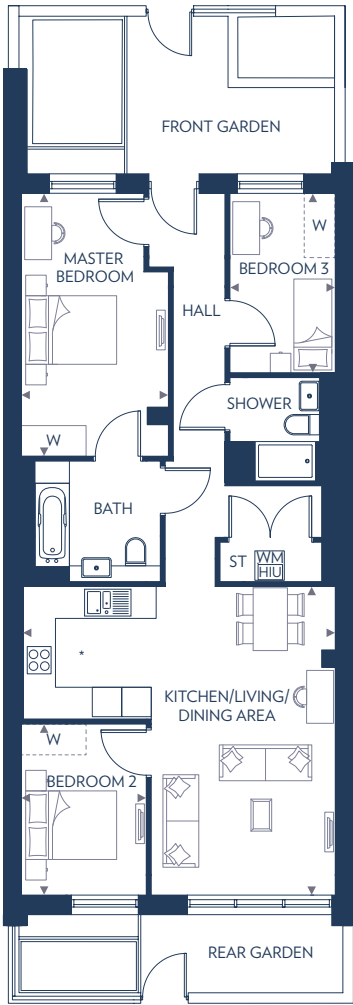
First Floor



Ground Floor

These floor plans are indicative only and depict a typical layout. The dimensions and layouts have been taken from the planning drawings issued, however the dimensions are subject to change following the issue of working drawings. Furniture is used to indicate positioning only. For exact plot specification, details of external and internal finishes, dimensions and floor plan differences consult your sales executive. All dimensions are + or – 100mm and floor plans are not shown to scale. Plot 780 is handed. *Kitchen layouts vary, please speak to a sales executive for details.

3 BEDROOM APARTMENT
PLOT 777

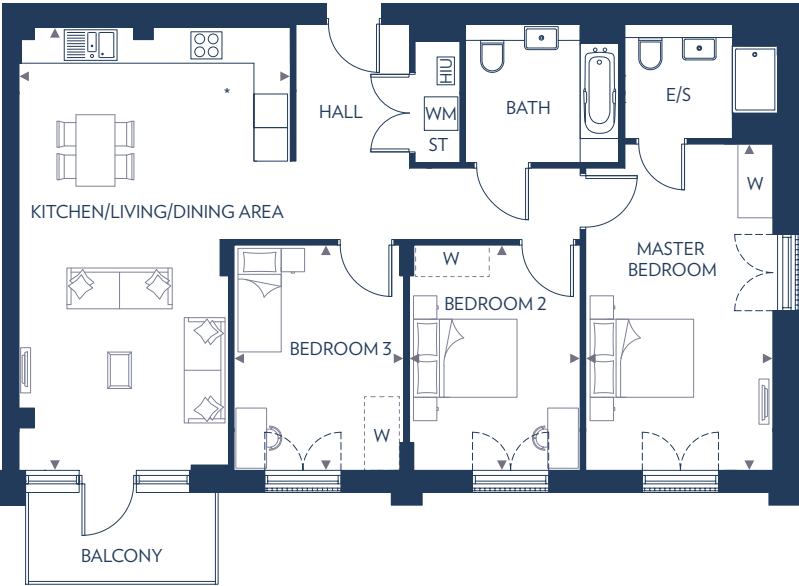


Kitchen/Living/Dining Area	6.29m (max) x 6.28m (max)	20'7" (max) x 20'7" (max)
Master Bedroom	5.35m x 3.00m (max)	17'6" x 9'10" (max)
Bedroom 2	3.48m x 2.55m	11'5" x 8'4"
Bedroom 3	3.65m x 2.14m	11'11" x 7'0"

HIU – Heat Interface Unit
ST – Store
W – Wardrobe
WM – Washing Machine

These floor plans are indicative only and depict a typical layout. The dimensions and layouts have been taken from the planning drawings issued, however the dimensions are subject to change following the issue of working drawings. Furniture is used to indicate positioning only. For exact plot specification, details of external and internal finishes, dimensions and floor plan differences consult your sales executive. All dimensions are + or – 100mm and floor plans are not shown to scale. *Kitchen layout may vary, please speak to a sales executive for details.

3 BEDROOM APARTMENT
PLOTS 814, 821 & 824



Kitchen/Living/Dining Area	7.90m (max) x 4.85m (max)	25'11" (max) x 15'11" (max)
Master Bedroom	5.83m x 3.34m	19'1" x 10'11"
Bedroom 2	4.02m x 3.04m	13'2" x 10'0"
Bedroom 3	4.02m x 3.03m	13'2" x 9'11"

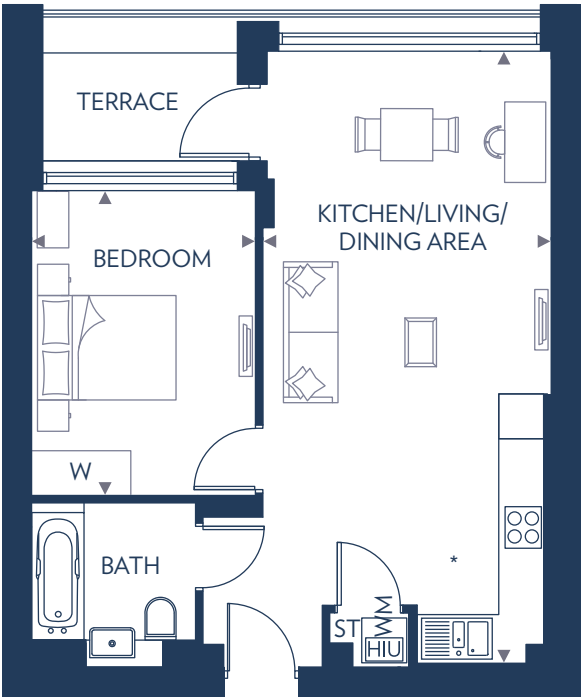
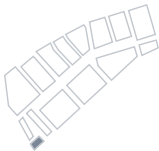
E/S – En Suite
HIU – Heat Interface Unit
ST – Store
W – Wardrobe
WM – Washing Machine

These floor plans are indicative only and depict a typical layout. The dimensions and layouts have been taken from the planning drawings issued, however the dimensions are subject to change following the issue of working drawings. Furniture is used to indicate positioning only. For exact plot specification, details of external and internal finishes, dimensions and floor plan differences consult your sales executive. All dimensions are + or – 100mm and floor plans are not shown to scale. Plot 821 is handed. *Kitchen layouts vary, please speak to a sales executive for details.

AUDAX HEIGHTS



1 BEDROOM APARTMENT
PLOTS 843, 844, 849, 850,
855, 856, 861, 862, 867 & 868



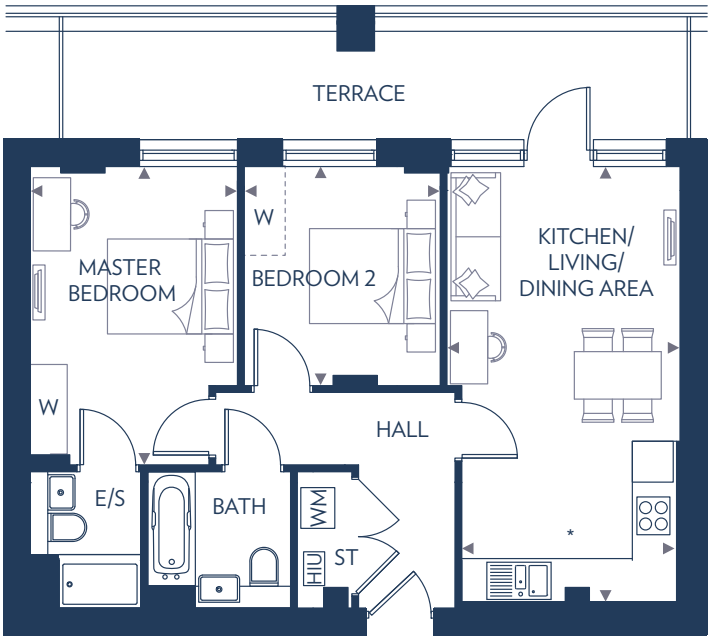
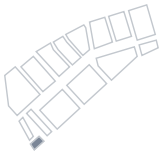
Kitchen/Living/Dining Area
8.15m x 3.85m 26'8" x 12'7"

Bedroom
4.07m x 2.99m 13'4" x 9'9"

HIU – Heat Interface Unit
ST – Store
W – Wardrobe
WM – Washing Machine

These floor plans are indicative only and depict a typical layout. The dimensions and layouts have been taken from the planning drawings issued, however the dimensions are subject to change following the issue of working drawings. Furniture is used to indicate positioning only. For exact plot specification, details of external and internal finishes, dimensions and floor plan differences consult your sales executive. All dimensions are + or – 100mm and floor plans are not shown to scale. Plots 844, 850, 856, 862 & 868 are handed. *Kitchen layouts vary, please speak to a sales executive for details.

2 BEDROOM APARTMENT
PLOTS 873 & 878



Kitchen/Living/Dining Area
6.39m x 3.42m (max) 3.13m (min) 20'11" x 11'2" (max) 10'3" (min)

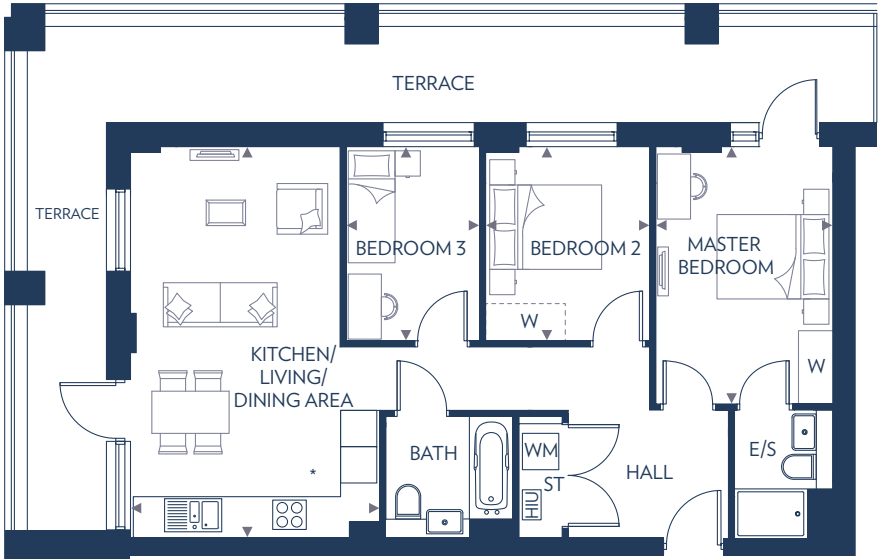
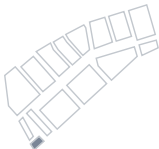
Master Bedroom
4.38m x 3.04m 14'4" x 9'11"

Bedroom 2
3.21m x 2.87m 10'6" x 9'5"

E/S – En Suite
HIU – Heat Interface Unit
ST – Store
W – Wardrobe
WM – Washing Machine

These floor plans are indicative only and depict a typical layout. The dimensions and layouts have been taken from the planning drawings issued, however the dimensions are subject to change following the issue of working drawings. Furniture is used to indicate positioning only. For exact plot specification, details of external and internal finishes, dimensions and floor plan differences consult your sales executive. All dimensions are + or – 100mm and floor plans are not shown to scale. *Kitchen layouts vary, please speak to a sales executive for details.

3 BEDROOM APARTMENT
PLOTS 872 & 877

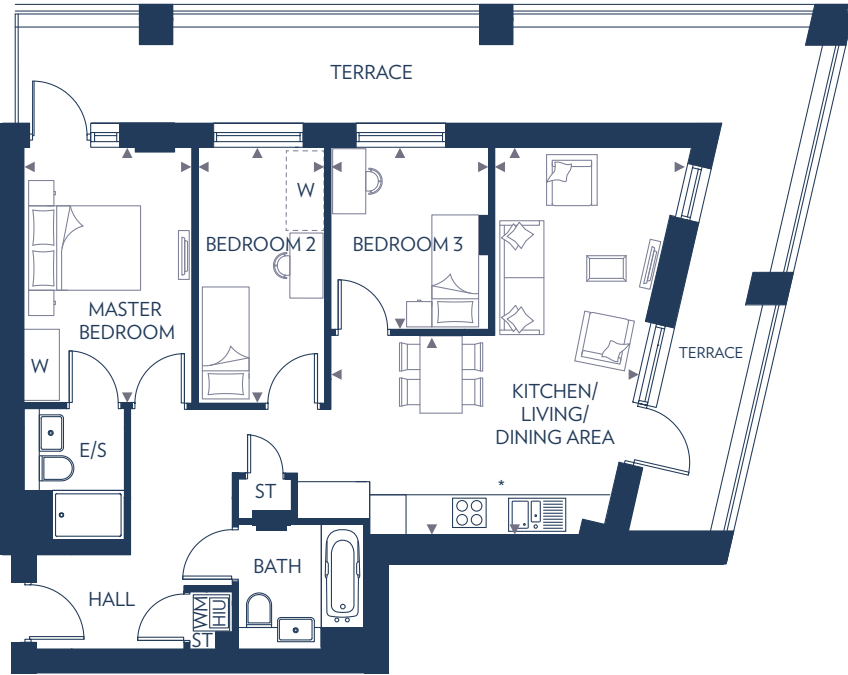
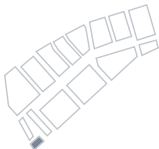


Kitchen/Living/Dining Area	
6.41m x 4.12m (max)	21'0" x 13'6" (max)
Master Bedroom	
4.28m x 2.92m	14'0" x 9'7"
Bedroom 2	
3.21m x 2.71m	10'6" x 8'10"
Bedroom 3	
3.21m x 2.19m	10'6" x 7'2"

E/S – En Suite
HIU – Heat Interface Unit
ST – Store
W – Wardrobe
WM – Washing Machine

These floor plans are indicative only and depict a typical layout. The dimensions and layouts have been taken from the planning drawings issued, however the dimensions are subject to change following the issue of working drawings. Furniture is used to indicate positioning only. For exact plot specification, details of external and internal finishes, dimensions and floor plan differences consult your sales executive. All dimensions are + or – 100mm and floor plans are not shown to scale. *Kitchen layouts vary, please speak to a sales executive for details.

3 BEDROOM APARTMENT
PLOTS 874 & 879

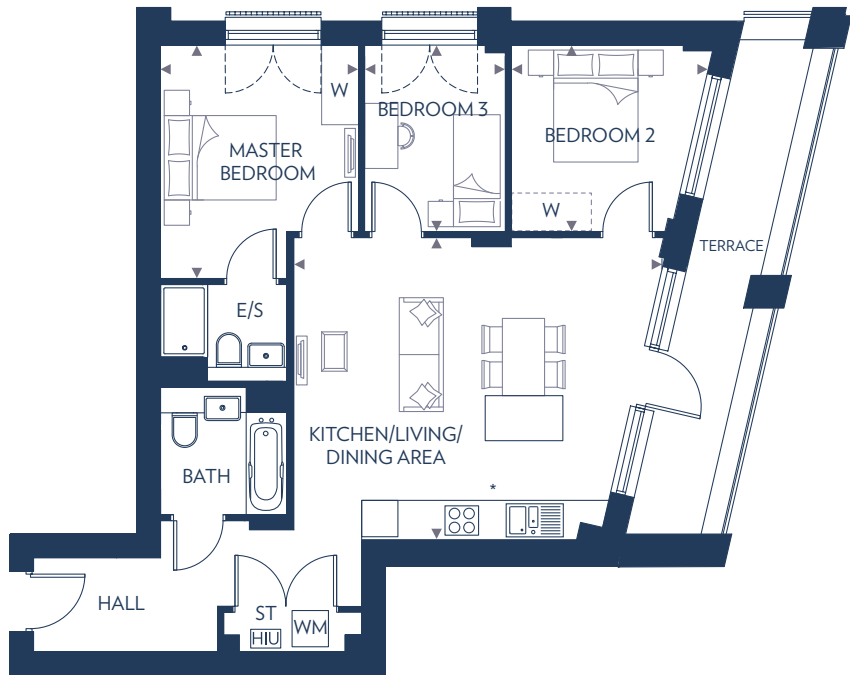
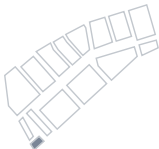


Kitchen/Living/Dining Area	
6.41m (max) 3.30m (min) x 5.12m (max) 3.19m (min)	21'0" (max) 10'10" (min) x 16'9" (max) 10'5" (min)
Master Bedroom	
4.23m x 2.77m	13'10" x 9'1"
Bedroom 2	
4.23m x 2.10m	13'10" x 6'10"
Bedroom 3	
3.01m x 2.61m	9'10" x 8'6"

E/S – En Suite
HIU – Heat Interface Unit
ST – Store
W – Wardrobe
WM – Washing Machine

These floor plans are indicative only and depict a typical layout. The dimensions and layouts have been taken from the planning drawings issued, however the dimensions are subject to change following the issue of working drawings. Furniture is used to indicate positioning only. For exact plot specification, details of external and internal finishes, dimensions and floor plan differences consult your sales executive. All dimensions are + or – 100mm and floor plans are not shown to scale. *Kitchen layouts vary, please speak to a sales executive for details.

3 BEDROOM APARTMENT
PLOTS 845, 851, 857, 863 & 869

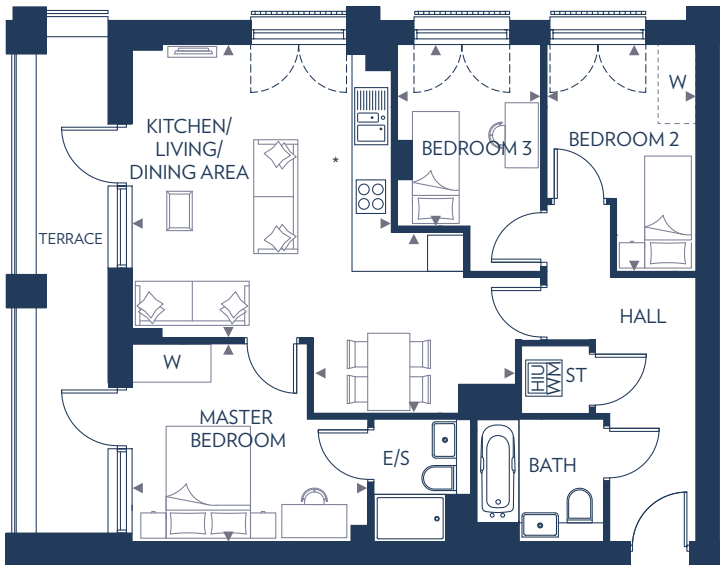
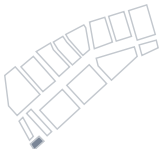


Kitchen/Living/Dining Area	
6.07m x 4.96m	19'11" x 16'3"
Master Bedroom	
3.85m x 3.26m	12'7" x 10'8"
Bedroom 2	
3.32m x 3.08m	10'11" x 10'1"
Bedroom 3	
3.08m x 2.32m	10'1" x 7'7"

E/S – En Suite
HIU – Heat Interface Unit
ST – Store
W – Wardrobe
WM – Washing Machine

These floor plans are indicative only and depict a typical layout. The dimensions and layouts have been taken from the planning drawings issued, however the dimensions are subject to change following the issue of working drawings. Furniture is used to indicate positioning only. For exact plot specification, details of external and internal finishes, dimensions and floor plan differences consult your sales executive. All dimensions are + or – 100mm and floor plans are not shown to scale. *Kitchen layouts vary, please speak to a sales executive for details.

3 BEDROOM APARTMENT
PLOTS 842, 848, 854, 860 & 866

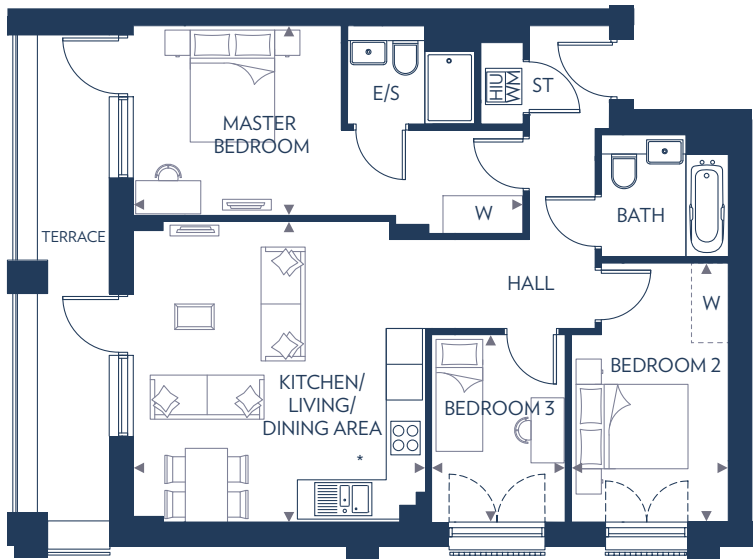
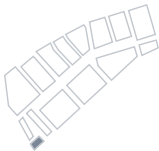


Kitchen/Living/Dining Area	
4.84m (max) 2.99m (min) x 4.28m (max) 3.33m (min)	15'10" (max) 9'9" (min) x 14'0" (max) 10'11" (min)
Master Bedroom	
3.89m x 3.27m	12'9" x 10'9"
Bedroom 2	
3.75m x 2.46m (max)	12'3" x 8'0" (max)
Bedroom 3	
3.00m x 2.37m	9'10" x 7'9"

E/S – En Suite
HIU – Heat Interface Unit
ST – Store
W – Wardrobe
WM – Washing Machine

These floor plans are indicative only and depict a typical layout. The dimensions and layouts have been taken from the planning drawings issued, however the dimensions are subject to change following the issue of working drawings. Furniture is used to indicate positioning only. For exact plot specification, details of external and internal finishes, dimensions and floor plan differences consult your sales executive. All dimensions are + or – 100mm and floor plans are not shown to scale. *Kitchen layouts vary, please speak to a sales executive for details.

3 BEDROOM APARTMENT
PLOTS 841, 847, 853, 859, 865, 871 & 876

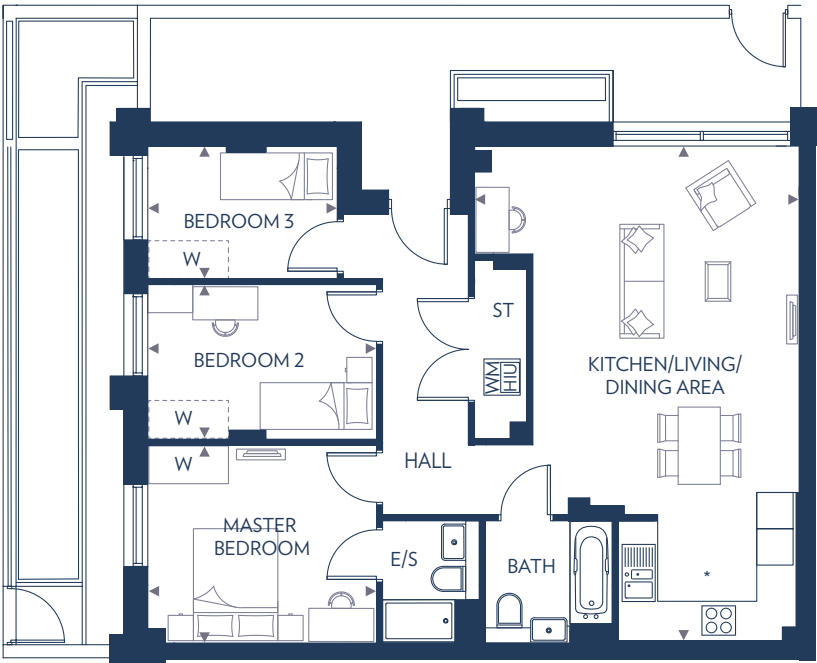
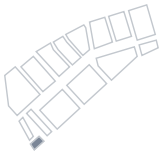


Kitchen/Living/Dining Area	16'3" x 15'10"
Master Bedroom	21'1" (max) x 10'3" (max)
Bedroom 2	14'0" x 8'6"
Bedroom 3	10'2" x 7'3"

E/S – En Suite
HIU – Heat Interface Unit
ST – Store
W – Wardrobe
WM – Washing Machine

These floor plans are indicative only and depict a typical layout. The dimensions and layouts have been taken from the planning drawings issued, however the dimensions are subject to change following the issue of working drawings. Furniture is used to indicate positioning only. For exact plot specification, details of external and internal finishes, dimensions and floor plan differences consult your sales executive. All dimensions are + or – 100mm and floor plans are not shown to scale. *Kitchen layouts vary, please speak to a sales executive for details.

3 BEDROOM APARTMENT
PLOT 839

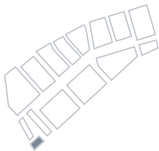


Kitchen/Living/Dining Area	26'8" x 17'7" (max)
Master Bedroom	12'4" x 10'8"
Bedroom 2	12'4" x 8'4"
Bedroom 3	10'3" x 7'2"

E/S – En Suite
HIU – Heat Interface Unit
ST – Store
W – Wardrobe
WM – Washing Machine

These floor plans are indicative only and depict a typical layout. The dimensions and layouts have been taken from the planning drawings issued, however the dimensions are subject to change following the issue of working drawings. Furniture is used to indicate positioning only. For exact plot specification, details of external and internal finishes, dimensions and floor plan differences consult your sales executive. All dimensions are + or – 100mm and floor plans are not shown to scale. *Kitchen layout may vary, please speak to a sales executive for details.

3 BEDROOM APARTMENT
PLOT 838

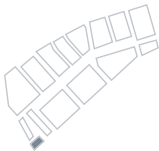


Kitchen/Living/Dining Area	8.11m (max) 4.82m (min) x 5.89m (max) 3.31m (min)	26'7" (max) 15'9" (min) x 19'4" (max) 10'10" (min)
Master Bedroom	3.96m x 3.27m	13'0" x 10'9"
Bedroom 2	3.78m x 2.55m	12'4" x 8'4"
Bedroom 3	3.13m x 2.17m	10'3" x 7'1"

E/S – En Suite
HIU – Heat Interface Unit
ST – Store
W – Wardrobe
WM – Washing Machine

These floor plans are indicative only and depict a typical layout. The dimensions and layouts have been taken from the planning drawings issued, however the dimensions are subject to change following the issue of working drawings. Furniture is used to indicate positioning only. For exact plot specification, details of external and internal finishes, dimensions and floor plan differences consult your sales executive. All dimensions are + or – 100mm and floor plans are not shown to scale. *Kitchen layout may vary, please speak to a sales executive for details.

3 BEDROOM APARTMENT
PLOTS 846, 852, 858, 864, 870, 875 & 880

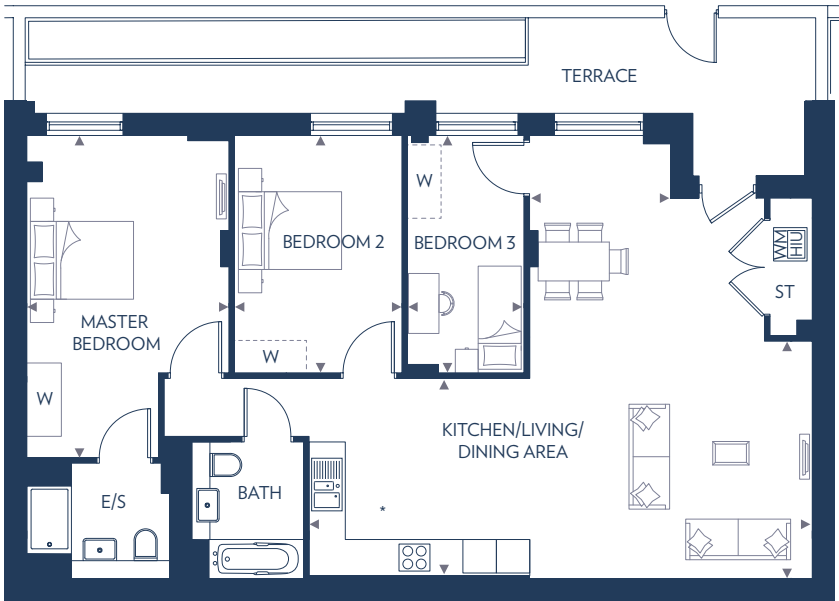
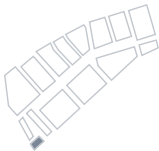


Kitchen/Living/Dining Area	8.13m (max) x 3.51m	26'8" (max) x 11'6"
Master Bedroom	3.83m x 3.80m	12'6" x 12'5"
Bedroom 2	3.83m x 2.45m	12'6" x 8'0"
Bedroom 3	3.83m x 2.29m	12'6" x 7'6"

E/S – En Suite
HIU – Heat Interface Unit
ST – Store
W – Wardrobe
WM – Washing Machine

These floor plans are indicative only and depict a typical layout. The dimensions and layouts have been taken from the planning drawings issued, however the dimensions are subject to change following the issue of working drawings. Furniture is used to indicate positioning only. For exact plot specification, details of external and internal finishes, dimensions and floor plan differences consult your sales executive. All dimensions are + or – 100mm and floor plans are not shown to scale. *Kitchen layouts vary, please speak to a sales executive for details.

3 BEDROOM APARTMENT
PLOT 840



Kitchen/Living/Dining Area	
9.02m (max) 2.54m (min) x 4.20m (max) 3.54m (min)	29'7" (max) 8'4" (min) x 13'9" (max) 11'7" (min)
Master Bedroom	
5.77m x 3.62m (max)	18'11" x 11'10" (max)
Bedroom 2	
4.25m x 3.00m	13'11" x 9'10"
Bedroom 3	
4.25m x 2.09m	13'11" x 6'10"

E/S – En Suite
HIU – Heat Interface Unit
ST – Store
W – Wardrobe
WM – Washing Machine

These floor plans are indicative only and depict a typical layout. The dimensions and layouts have been taken from the planning drawings issued, however the dimensions are subject to change following the issue of working drawings. Furniture is used to indicate positioning only. For exact plot specification, details of external and internal finishes, dimensions and floor plan differences consult your sales executive. All dimensions are + or – 100mm and floor plans are not shown to scale. *Kitchen layout may vary, please speak to a sales executive for details.



Seventh Floor



Sixth Floor



Fifth Floor



Fourth Floor



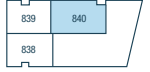
Third Floor



Second Floor



First Floor



Ground Floor



BUILT ON THE OLYMPIC LEGACY AND DESIGNED TO REVOLUTIONISE CITY LIVING



In accordance with the Consumer Protection from Unfair Trading Practices Regulations 2008, the information contained in this document is provided for general guidance only, and does not form the whole or any part of any offer or contract. These floor plans are indicative only and depict typical layouts. The dimensions and layouts have been taken from the planning drawings issued, however the dimensions are subject to change following the issue of working drawings. Furniture is used to indicate positioning only. For exact plot specification, details of external and internal finishes, dimensions and floor plan differences consult your sales executive. All dimensions are + or - 50mm and floor plans are not shown to scale. Customers are strongly advised to contact a Taylor Wimpey representative for further details and to satisfy themselves as to their accuracy. All information and computer representations contained in this document are taken from design intent material and may be subject to further design development. September 2020. Designed by Focus IMC.

CHOBHAM MANOR

Queen Elizabeth Olympic Park,
1 Hyett Terrace,
Honour Lea Avenue,
Stratford, London, E20 1HH

020 3535 6987

chobhammanor.co.uk

Delivered in partnership



**Taylor
Wimpey**