



Courthouse Street

Otley, LS21 3AN

£925 Per Calendar Month



A spacious two bedroom duplex apartment within the historic Grade II listed Courthouse building in the centre of Otley. The apartment, one of only four in the building, retains many of stunning character features including a wonderful spiral staircase sweeping down to the the lower ground floor. There are high ceilings to the ground floor, lots of additional storage and an attractive communal entrance hallway with mosaic tiled flooring. There is also a private rear entrance door which leads out to a single parking space. The accommodation comprises: entrance hallway, living room and two bedrooms (one with an en suite), to the ground floor, and to the lower ground floor there is a spacious kitchen/diner, a further versatile snug off the kitchen area, a bathroom and large storage room. The spacious and unusual hall/understairs adds a further dimension. The apartment also benefits from gas central heating.

Otley is a thriving market town in the Wharfe Valley offering a wide range of amenities, shops, supermarkets and traditional pubs. The town centre bus station has regular bus services to Leeds, Bradford and Harrogate, and in addition, there is a railway station at nearby Menston offering mainline links. For those travelling further afield, Leeds/Bradford International Airport is in nearby Yeadon.



DIRECTIONS

From our Hunters Otley offices on Kirkgate, turn left onto Bondgate. After the pedestrian crossing turn left onto Crossgate and continue until the traffic lights. Go straight on at the lights onto Wesley Street, and then find somewhere to park on Courthouse Street or within the pay and display car park. The apartment is on the corner of Wesley Street and Courthouse Street with the communal entrance door, for two apartments, being on Courthouse Street.

ADDITIONAL SERVICES

If you are thinking of selling or letting your home, please contact our office for more information. Hunters is the fastest growing independent estate agency in the country, with more than 200 branches nationwide. We can put you in touch with a local independent financial advisor, who can offer the latest mortgage products, tailored to your individual requirements.

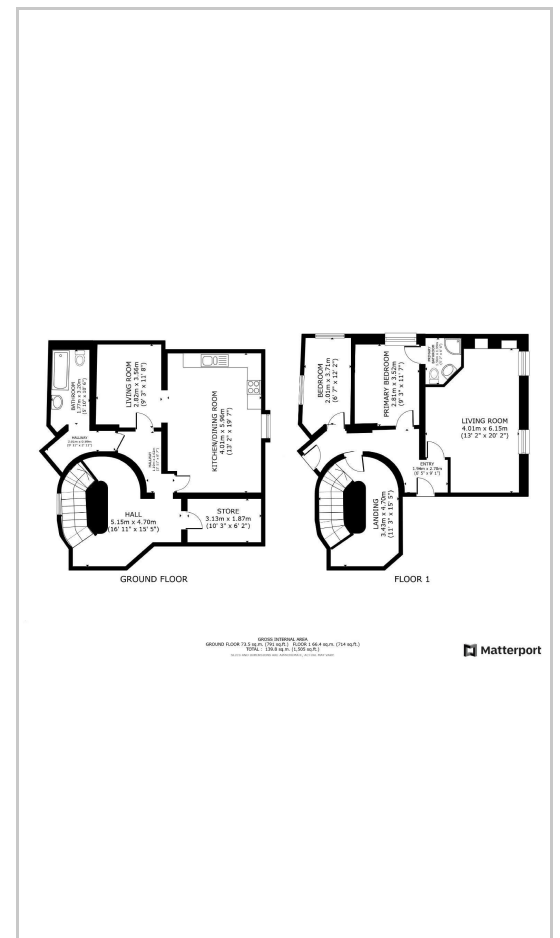
DISCLAIMER

These particulars are intended to give a fair and reliable description of the property but no responsibility for any inaccuracy or error can be accepted and do not constitute an offer or contract. We have not tested any services or appliances (including central heating if fitted) referred to in these particulars and the purchasers are advised to satisfy themselves as to the working order and condition. If a property is unoccupied at any time there may be reconnection charges for any switched off/disconnected or drained services or appliances - All measurements are approximate.

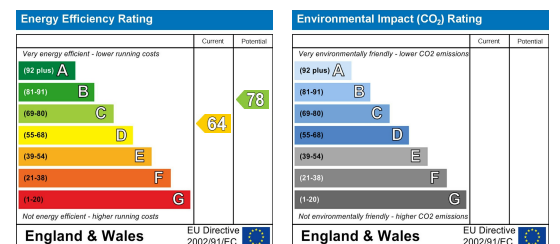
Area Map



Floor Plans



Energy Efficiency Graph



These particulars are intended to give a fair and reliable description of the property but no responsibility for any inaccuracy or error can be accepted and do not constitute an offer or contract. We have not tested any services or appliances (including central heating if fitted) referred to in these particulars and the purchasers are advised to satisfy themselves as to the working order and condition. If a property is unoccupied at any time there may be reconnection charges for any switched off/disconnected or drained services or appliances - All measurements are approximate. **THINKING OF SELLING?** If you are thinking of selling your home or just curious to discover the value of your property, Hunters would be pleased to provide free, no obligation sales and marketing advice. Even if your home is outside the area covered by our local offices we can arrange a Market Appraisal through our national network of Hunters estate agents.

56-58 Kirkgate, Otley, LS21 3HJ

Tel: 01943 660002 Email: otley@hunters.com <https://www.hunters.com>