



Land to the rear of Heol Dyfed, Maesteg, CF34 0PJ

£64,995

Here's a fantastic opportunity to acquire a plot with approved planning permission for a two bedroom bungalow. Located behind Heol Dyfed, next to a wooded area, this secluded plot is in an ideal location to build your new home. Within easy access of local transport links, shops and schools.

BCBC Planning Application ref: P/22/710/OUT

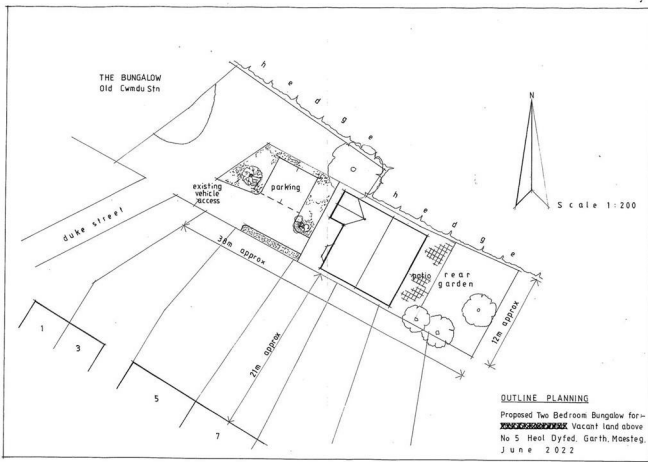
Location: (what3words) /// newest.woods.large

Plot



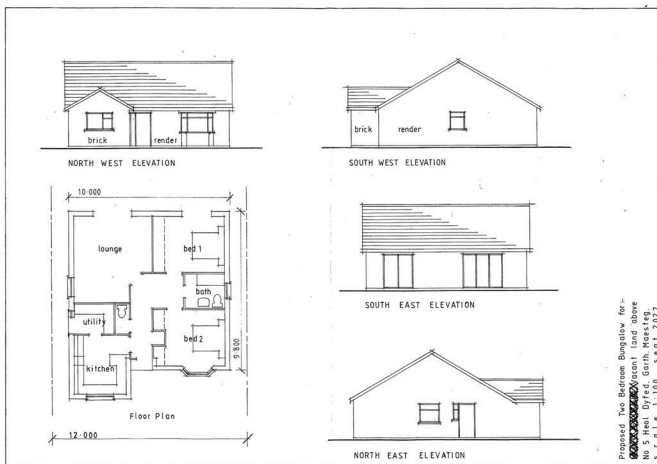
Previously utilized as a collection of allotments

Plot Plan



Accessed via lane north east of Duke Street. The plot is approximately 456 square meters (38m X 12m)

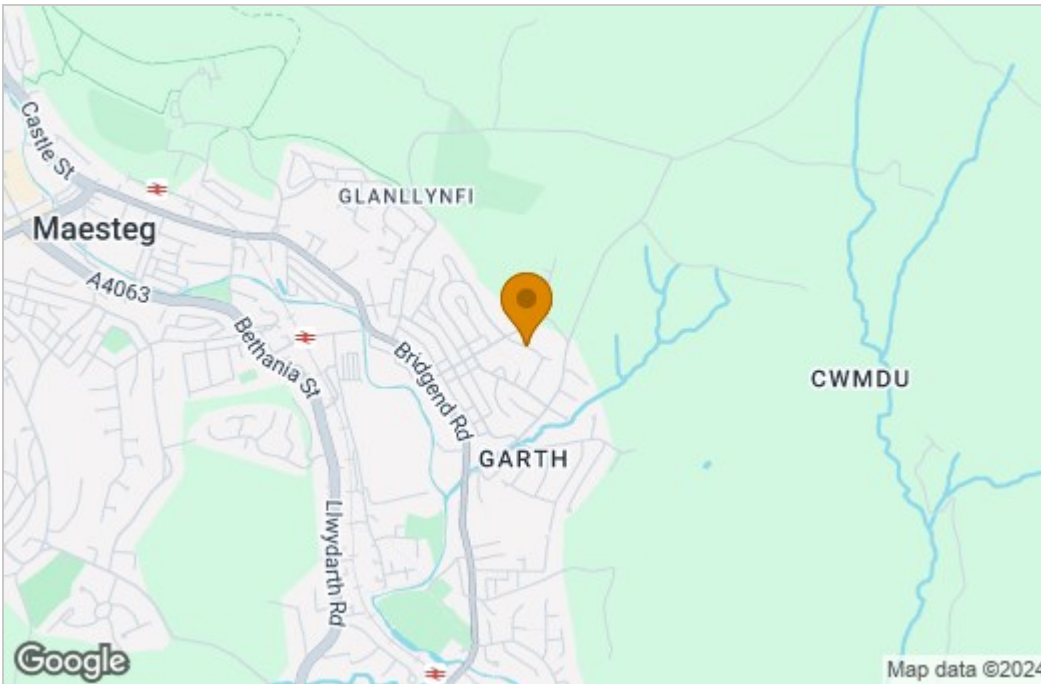
Proposed Property



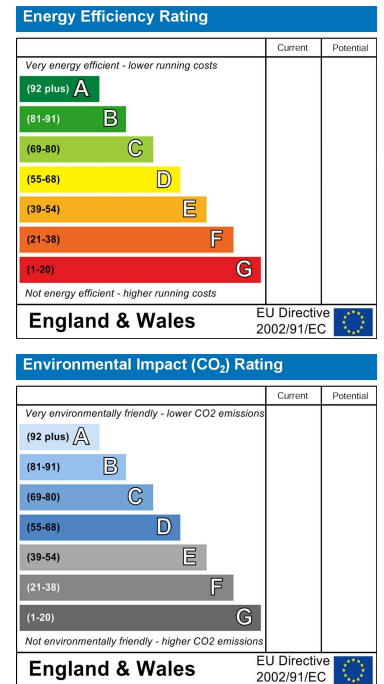
Permission for a two bedroom detached bungalow with rear garden and off road parking to the front.

Floor Plan

Area Map



Energy Efficiency Graph



These particulars, whilst believed to be accurate are set out as a general outline only for guidance and do not constitute any part of an offer or contract. Intending purchasers should not rely on them as statements of representation of fact, but must satisfy themselves by inspection or otherwise as to their accuracy. No person in this firm's employment has the authority to make or give any representation or warranty in respect of the property.