

01843 230 960

www.lovetts.net



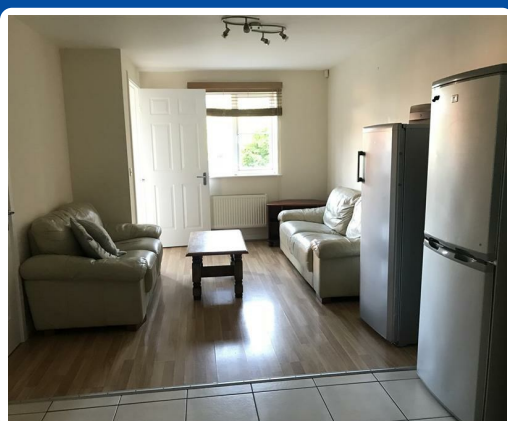
St. Christophers Mews, Ramsgate, CT11 7SF

£650 PCM

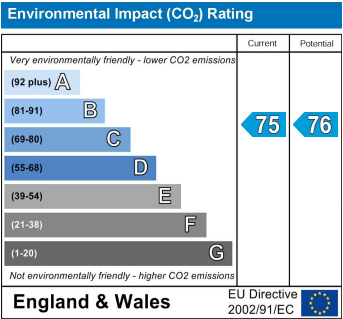
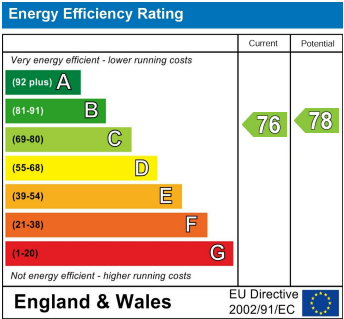
Spacious Room with Ensuite in a House Share – Available Now!

Located on the first floor of the building this double Bedroom with an En-Suite is available for single occupancy. You'll also have access to shared spaces including a fully equipped kitchen, a cosy living room, and a well-maintained garden.

Situated in a great location with excellent transport links and bills included Don't miss out on this fantastic opportunity! Contact us today to arrange a viewing.



St. Christophers Mews, Ramsgate, CT11 7SF



Lovetts Birchington Ltd. Trading as Lovetts Property Services
Registered Office – 13 Station Road, Birchington, Kent, CT7 9DJ
Reg. In England No. 4264378 VAT No.785 158296
Directors: Richard Crosby MNAEA & Tracey Crosby

