



PCM

£1,050

2 x 

1 x 

1 x 

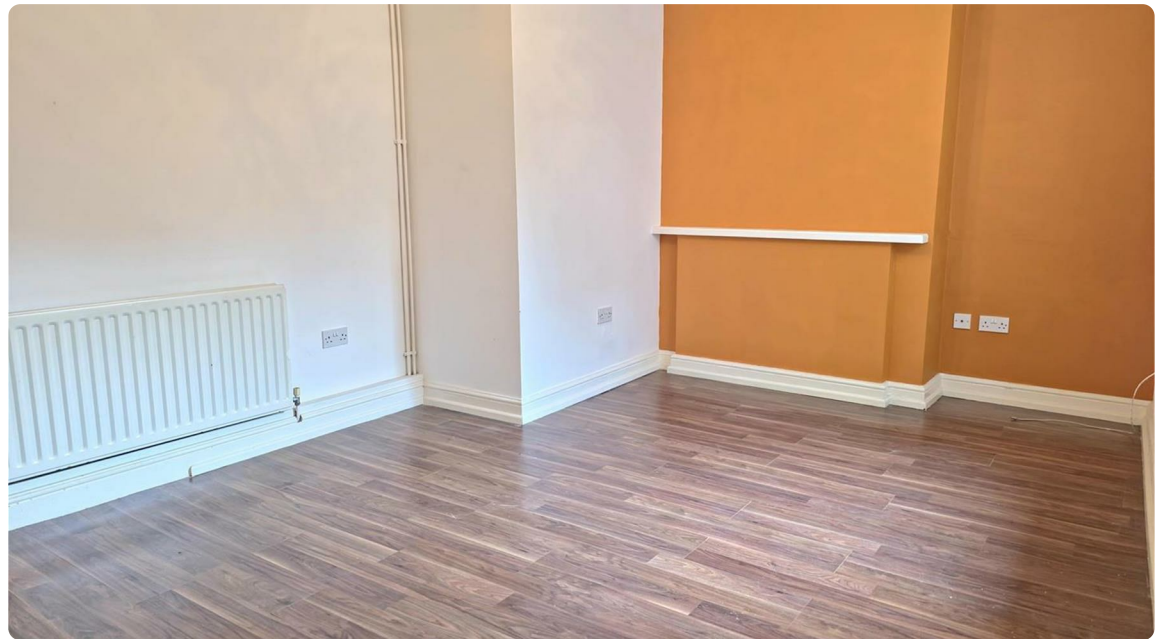
**Albert Road,
Ramsgate, CT11**

Located just moments from the seafront, this delightful two-bedroom basement flat offers comfortable coastal living with sea views right from your doorstep.

The property features a spacious Living Room, a well-equipped Kitchen to the rear with fitted wall and base units, oven/hob space for a fridge freezer, a handy pantry, and direct access to a private courtyard garden, perfect for relaxing outdoors.

Both Bedrooms are generous doubles, and the Bathroom is fitted with a classic three-piece suite.

Ideally positioned close to local amenities, transport links, and Ramsgate's picturesque harbour, this home is perfect for anyone looking to enjoy the charm of seaside living.







- EPC Rating - D
- Two double bedrooms
- Sea views from the street
- Kitchen & Pantry
- Private courtyard garden
- Close to seafront and local amenities
- Great central Ramsgate location
- Available Soon
- Basement Flat







Energy Efficiency Rating		
	Current	Potential
Very energy efficient - lower running costs		
(92 plus) A		
(81-91) B		
(69-80) C		
(55-68) D	63	77
(39-54) E		
(21-38) F		
(1-20) G		
Not energy efficient - higher running costs		
England & Wales	EU Directive 2002/91/EC	

Environmental Impact (CO ₂) Rating		
	Current	Potential
Very environmentally friendly - lower CO ₂ emissions		
(92 plus) A		
(81-91) B		
(69-80) C		
(55-68) D		
(39-54) E		
(21-38) F		
(1-20) G		
Not environmentally friendly - higher CO ₂ emissions		
England & Wales	EU Directive 2002/91/EC	

