

01843 230 960

[www.lovetts.net](http://www.lovetts.net)

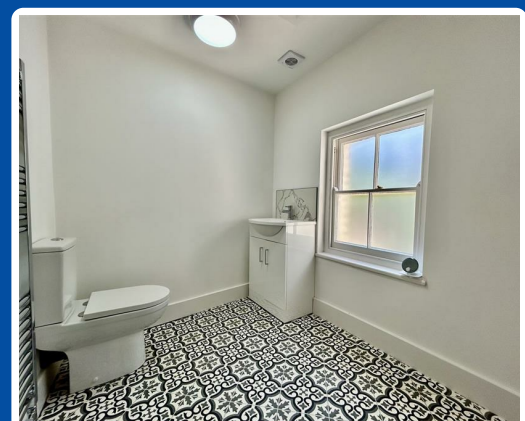


## Station Road, Birchington, CT7 9DQ

**£550 PCM**

A quiet and private office room available to let within this historic building on Station Road, right in the heart of Birchington-on-Sea.

Located on the second floor and accessed via the main entrance of an established solicitors' office, this space offers a professional setting ideal for a sole trader, consultant, or remote worker seeking a central and characterful base.



# Station Road, Birchington, CT7 9DQ

Main Room  
14'26" x 12'05"

Energy Efficiency Rating		
	Current	Potential
Very energy efficient - lower running costs		
(92 plus) <b>A</b>		
(81-91) <b>B</b>		
(69-80) <b>C</b>		
(55-68) <b>D</b>		
(39-54) <b>E</b>		
(21-38) <b>F</b>		
(1-20) <b>G</b>		
Not energy efficient - higher running costs		
England & Wales		
EU Directive 2002/91/EC		

Environmental Impact (CO <sub>2</sub> ) Rating		
	Current	Potential
Very environmentally friendly - lower CO <sub>2</sub> emissions		
(92 plus) <b>A</b>		
(81-91) <b>B</b>		
(69-80) <b>C</b>		
(55-68) <b>D</b>		
(39-54) <b>E</b>		
(21-38) <b>F</b>		
(1-20) <b>G</b>		
Not environmentally friendly - higher CO <sub>2</sub> emissions		
England & Wales		
EU Directive 2002/91/EC		

