

01843 230 960

www.lovetts.net



Nash Court Gardens, Margate, CT9 4DF

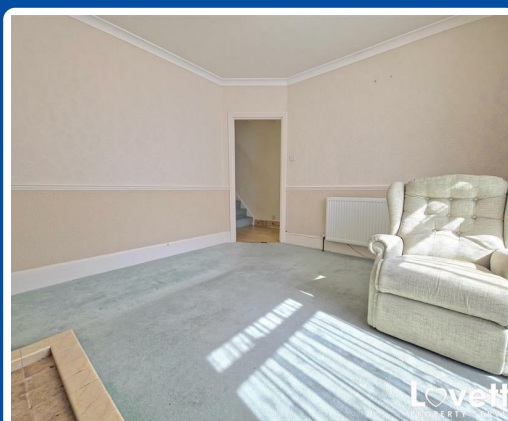
£1,100 PCM

Lovetts are delighted to present this well-proportioned two-bedroom terraced home, located in Nash Court Gardens, Margate.

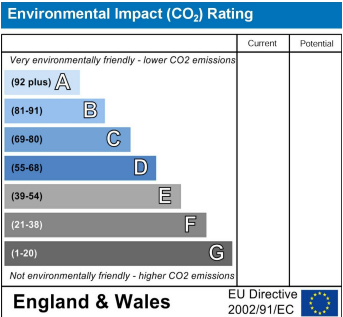
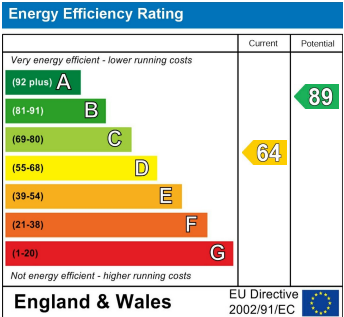
The ground floor offers a bright and spacious Living Room which features a fireplace and bay window. The Dining area is to the rear and this flows into a well-appointed kitchen featuring fitted wall and base units, free standing oven and with direct access to a conservatory that opens out onto the private rear garden.

Upstairs, the property comprises two generously sized double bedrooms—one overlooking the front, the other to the rear—and a modern bathroom complete with a matching three-piece suite.

Call Lovetts on 01843 230 960 to arrange your viewing today.



Nash Court Gardens, Margate, CT9 4DF



Lovetts Birchington Ltd. Trading as Lovetts Property Services
Registered Office – 13 Station Road, Birchington, Kent, CT7 9DJ
Reg. In England No. 4264378 VAT No.785 158296
Directors: Richard Crosby MNAEA & Tracey Crosby

