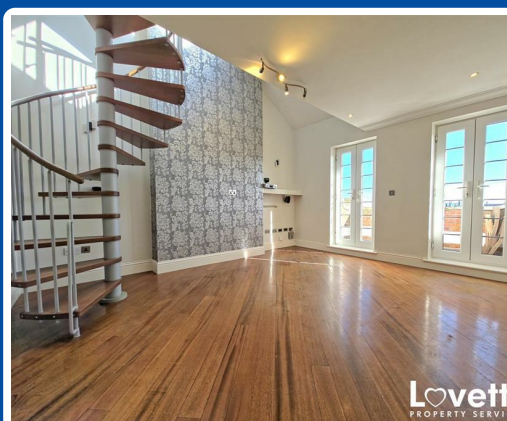




## Eastern Esplanade, Margate, CT9 2JB

**£415,000**

Lovetts are pleased to be offer this luxury two/three bedroom Penthouse. With a spiral staircase in the lounge/diner leading to a third bedroom or lounge as well as a gallery in the Primary bedroom. This apartment needs to be seen to be believed. Benefits including state of the art integrated plug and play entertainment system with ceiling speakers incorporated in most rooms. State of the art kitchen with integrated appliances, modern individual bathroom and en-suite which have been designed and finished to the highest standard. In addition sea views are standard from both the balcony and delightful double glazed sash windows. The property also benefits from it's own parking space at the front of the building. Available to view now! Please call Lovetts on 01843 230960.





# Eastern Esplanade, Margate, CT9 2JB

## Kitchen

Double-glazed sash window to front with sea views. Modern selection of wall and base units in a with complementary work surfaces. Stainless steel sink unit with drainer. Under cupboard lighting. Electric oven and gas hob with overhead extractor. Tiled granite style flooring. Integral fridge freezer. Integral washing machine and dishwasher. Coved ceiling. Combination boiler.

## Lounge 12'5" x 15'3" (3.81 x 4.65m)

Two double-glazed patio doors to balcony. Two double radiators. Coved ceiling. Telephone point. TV and sky point. Surround sound. Halogen spotlights. Octopus speaker and control system. Solid wooden flooring. Fitted wall lights. Spiral staircase to...

## Bedroom Two 20'4" x 10'0" (6.20m x 3.07)

Double-glazed sash window to rear. Two double radiators. Power points. TV points. Halogen lighting. Octopus console and speakers.

## Bedroom Three 20'4" x 10'0" (6.20m x 3.07m)

Three velux roof windows with sea view. Power points. Eaves storage. TV point. Wall lights.

## Master Bedroom 19'10" x 13'3" (6.07m x 4.04m)

Double-glazed bay window to rear. Radiator. Power points. TV point. Octopus speakers and control system. Coved ceiling. Halogen lights.

## Gallery Area 13'3" x 10'7" (4.04m x 3.25m )

Accessed via a moveable staircase with glazed retaining wall. Two velux windows. Radiator. Feature LED lighting. Telephone point. Large fitted shelving. Fantastic room for relaxing!

