



## St. Christophers Mews, Ramsgate, CT11 7SF

**£600 PCM**

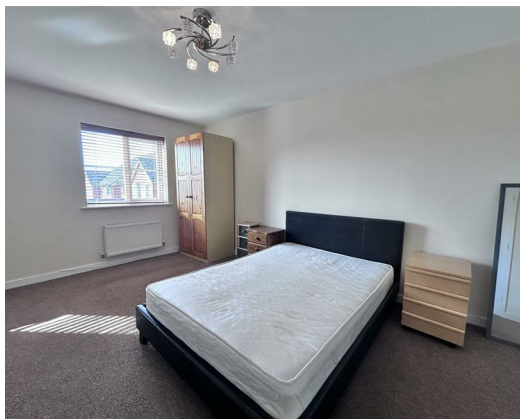
This 5 Bedroom property will be available for single room renting from the end of August and should be viewed early to avoid disappointment. This furnished accommodation is arranged as follow - downstairs you will find an open-plan Kitchen/Lounge area with fitted wall/base units with surrounding tiling, fitted electric oven with gas hob and extraction hood over, washing machine and dishwasher and a door way to a shallow Hall giving access to the rear Garden and to the downstairs Cloakroom. Upstairs, on the first floor you will find two Bedrooms, one having an en-suite Shower Room, slightly more expensive than the others. On the second floor you will find a further three more Bedrooms and a Bathroom with Bath, WC and wash hand basin. There is also a garage to be let separately.



# St. Christophers Mews, Ramsgate, CT11 7SF

Energy Efficiency Rating		Current	Potential
Very energy efficient - lower running costs			
(92 plus) A			
(81-91) B			
(69-80) C			
(55-68) D			
(39-54) E			
(21-38) F			
(1-20) G			
Not energy efficient - higher running costs			
<b>England &amp; Wales</b>	EU Directive 2002/91/EC	76	78

Environmental Impact (CO <sub>2</sub> ) Rating		Current	Potential
Very environmentally friendly - lower CO <sub>2</sub> emissions			
(92 plus) A			
(81-91) B			
(69-80) C			
(55-68) D			
(39-54) E			
(21-38) F			
(1-20) G			
Not environmentally friendly - higher CO <sub>2</sub> emissions			
<b>England &amp; Wales</b>	EU Directive 2002/91/EC	75	76



Lovetts Birchington Ltd. Trading as Lovetts Property Services  
 Registered Office – 13 Station Road, Birchington, Kent, CT7 9DJ  
 Reg. In England No. 4264378 VAT No.785 158296  
 Directors: Richard Crosby MNAEA & Tracey Crosby

