

01843 230 960

www.lovetts.net

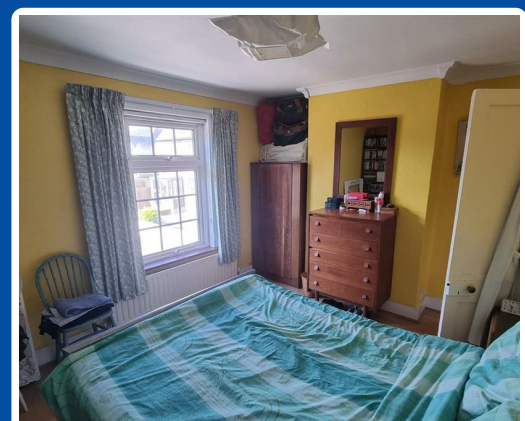


Victoria Road, Broadstairs, CT10 2UQ

£1,100 PCM

Located in the very popular village of St Peters, within Broadstairs, Lovetts are pleased to present this two Bedroom mid-terrace Cottage. The accommodation comprises; entry through a small entrance porch opening to the Lounge. This in turn has a door through to the Kitchen fitted having fitted base units, with a space for a cooker and plumbing for a washing machine. From the Kitchen there is access to a useful Basement Room and a shallow Hall that has doors to the rear Garden and to the Bathroom having a matching three-piece suite. Upstairs, there are two double Bedrooms.

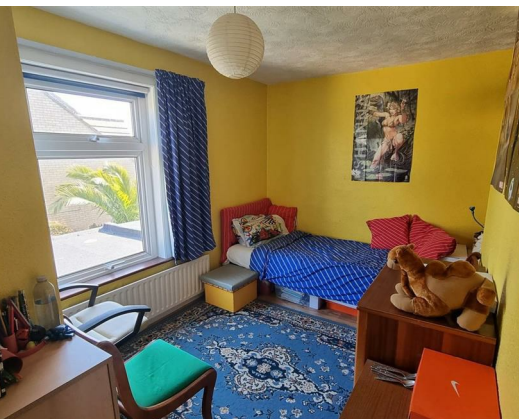
Please contact us on 01843 230 960 to arrange a viewing or ask any questions.



Victoria Road, Broadstairs, CT10 2UQ

Energy Efficiency Rating		
	Current	Potential
Very energy efficient - lower running costs		
(92 plus) A		
(81-91) B		
(69-80) C		
(55-68) D		
(39-54) E		
(21-38) F		
(1-20) G		
Not energy efficient - higher running costs		
England & Wales	EU Directive 2002/91/EC	

Environmental Impact (CO ₂) Rating		
	Current	Potential
Very environmentally friendly - lower CO ₂ emissions		
(92 plus) A		
(81-91) B		
(69-80) C		
(55-68) D		
(39-54) E		
(21-38) F		
(1-20) G		
Not environmentally friendly - higher CO ₂ emissions		
England & Wales	EU Directive 2002/91/EC	



Lovetts Birchington Ltd. Trading as Lovetts Property Services
 Registered Office – 13 Station Road, Birchington, Kent, CT7 9DJ
 Reg. In England No. 4264378 VAT No.785 158296
 Directors: Richard Crosby MNAEA & Tracey Crosby

