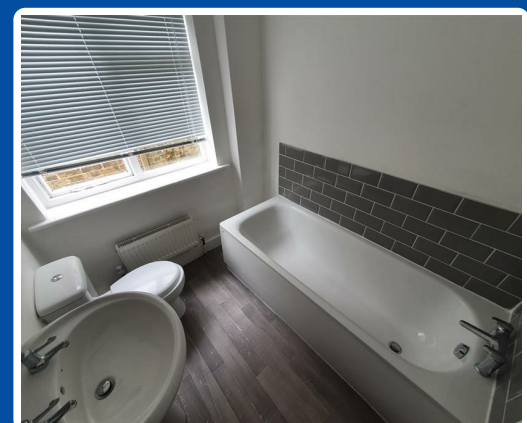
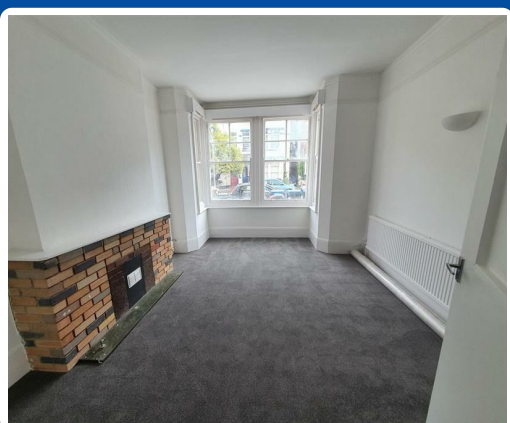




Norfolk Road, Margate, CT9 2HY

£180,000

**** CASH ONLY **** Lovetts are delighted to present to the market this wonderful 3 bedroom ground floor flat situated a stones throw from the Eastern Esplanade and local beaches. With easy access to all travel routes and local amenities provided on the popular Northdown Road this property is not to be missed. The property comprises of a large double bedroom at the front of the building with large square bay window, the second and third bedrooms are across the hall and have large sash windows that looks out over the private rear garden. The bathroom contains a bath with shower over, toilet and basin. To the rear of the property is the open planned kitchen/living room with door access to the back garden. Call us now to arrange your viewing.



Norfolk Road, Margate, CT9 2HY

Kitchen 6'10" x 11'5" (2.1 x 3.5)

Open plan kitchen with built in oven/hobs. Window to rear garden as well as door access.



Living Room 11'5" x 12'5" (3.5 x 3.8)

Large living room with open plan feel to Kitchen.



Bedroom 2 15'8" x 6'2" (4.8 x 1.9)

Good size bedroom with sash window to rear garden.



Bathroom 5'10" x 6'6" (1.8 x 2)

Bathroom with bath, shower over bath, basin and toilet. Window to back garden.

Energy Efficiency Rating		Environmental Impact (CO ₂) Rating	
	Current	Potential	
Very energy efficient - lower running costs			
(92 plus) A			(92 plus) A
(81-91) B			(81-91) B
(69-80) C			(69-80) C
(55-68) D			(55-68) D
(39-54) E			(39-54) E
(21-38) F			(21-38) F
(1-20) G			(1-20) G
Not energy efficient - higher running costs			
		72	
	54		
Very environmentally friendly - lower CO ₂ emissions			
Not environmentally friendly - higher CO ₂ emissions			
England & Wales		England & Wales	
EU Directive 2002/91/EC		EU Directive 2002/91/EC	



Lovetts Birchington Ltd. Trading as Lovetts Property Services
 Registered Office – 13 Station Road, Birchington, Kent, CT7 9DJ
 Reg. In England No. 4264378 VAT No.785 158296
 Directors: Richard Crosby MNAEA & Tracey Crosby

