

01843 230 960

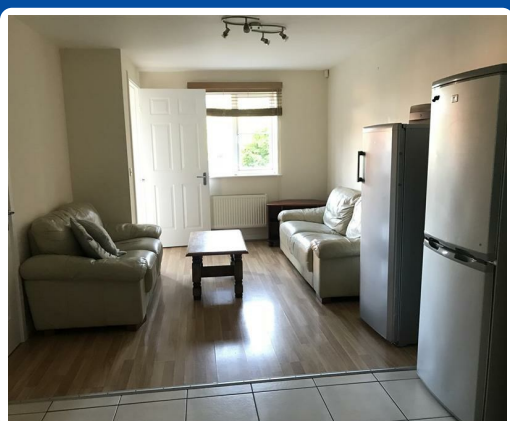
www.lovettts.net



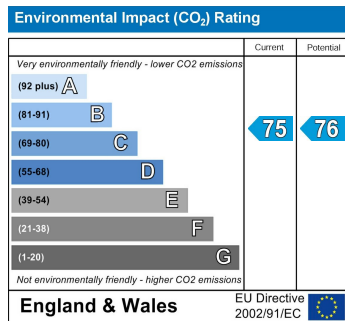
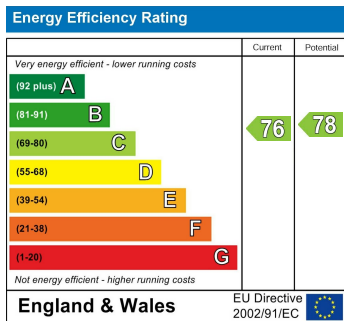
St. Christophers Mews, Ramsgate, CT11 7SF

£1,950 PCM

Currently let to Pfizers Students. This property will be available from the end of August and should be viewed early to avoid disappointment. This furnished accommodation is arranged as follow - downstairs you will find an open-plan Kitchen/Lounge area with fitted wall/base units with surrounding tiling, fitted electric oven with gas hob and extraction hood over, washing machine and dishwasher and a door way to a shallow Hall giving access to the rear Garden and to the downstairs Cloakroom. Upstairs, on the first floor you will find three Bedrooms, one having an en-suite Shower Room. On the second floor you will find a further three more Bedrooms and a Bathroom with Bath, WC and wash hand basin. Finally, there is also a garage providing very useful storage space.



St. Christophers Mews, Ramsgate, CT11 7SF



Lovetts Birchington Ltd. Trading as Lovetts Property Services
 Registered Office – 13 Station Road, Birchington, Kent, CT7 9DJ
 Reg. In England No. 4264378 VAT No.785 158296
 Directors: Richard Crosby MNAEA & Tracey Crosby

