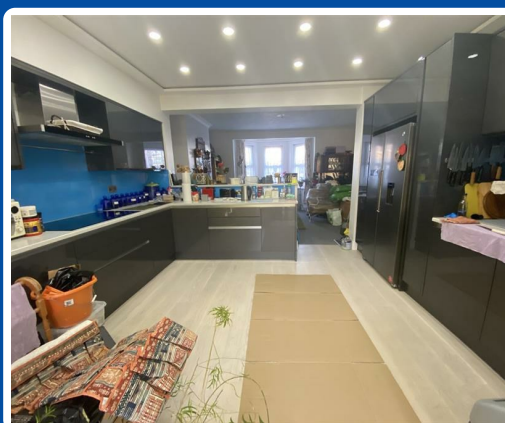


Margate Road, Ramsgate, CT11 7SG

£550 PCM

Located on the second floor of this lovely and spacious family home we are delighted to offer a choice of two rooms, both with Beds and wardrobes + chester drawers. Also located on the second floor is a Shower Room with there being a separate WC on the first floor. The in house Landlady offers shared use of the Kitchen/Dining space as well as the large Garden. This landlady is looking only for professional females.



Margate Road, Ramsgate, CT11 7SG

Bedroom to Front 13'6 x 8'11 (4.11m x 2.72m)

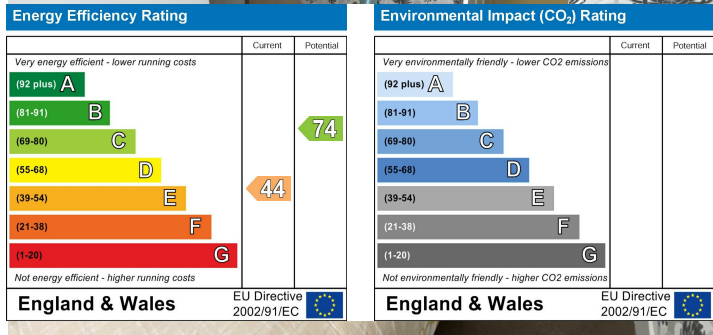
Dormer window to front, built-in cupboard, wardrobe and chester drawers.

Kitchen



Bedroom to Rear 12'11 x 12'1 (3.94m x 3.68m)

Dormer to rear, built-in wardrobe, chester drawers + desk.



Shower Room

Cubicle + Wash hand basin.

