



**MOVE INN ESTATES**

MAKING THE RIGHT MOVE



**M**  
MOVE INN ESTATES  
MAKING THE RIGHT MOVE  
**FOR SALE**  
01753 900 950  
sales@moveinniver.co.uk  
SARUM PARK



**Old Slade Lane**

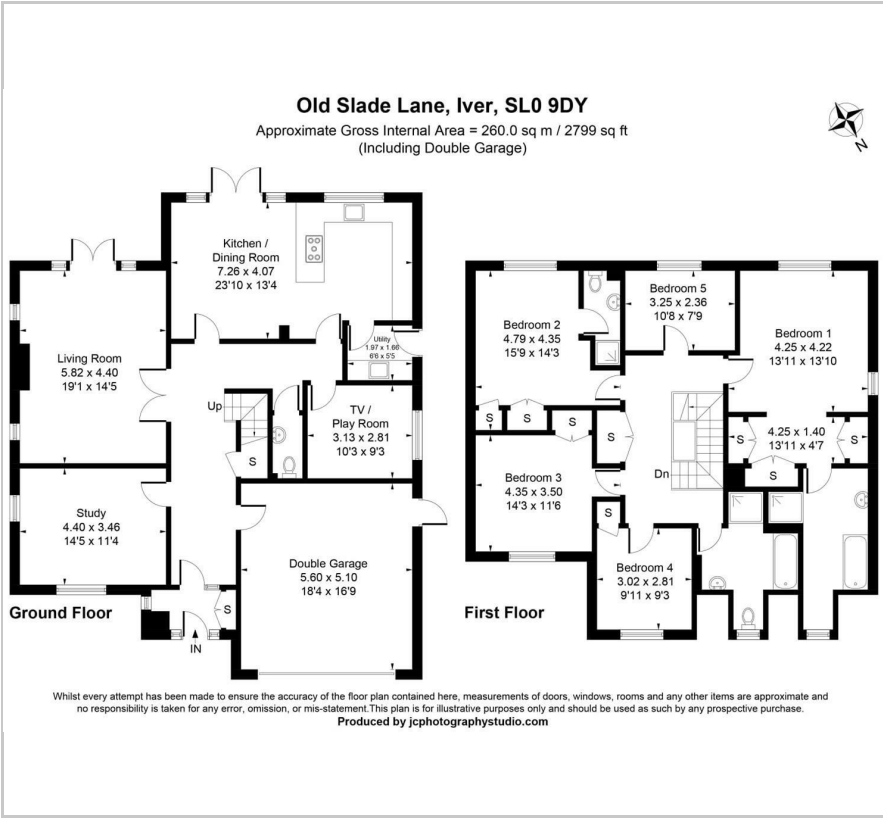
, Iver, SL0 9DY

**Offers In The Region Of £2,000,000**





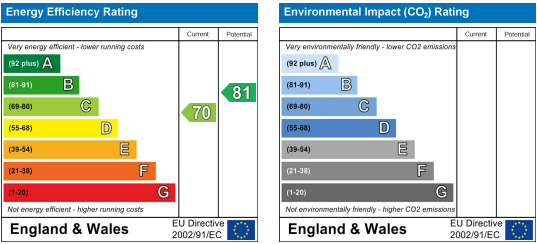
Floor Plan



Area Map



Energy Efficiency Graph



Viewing

Please contact our Move Inn Iver Office on 01753900950 if you wish to arrange a viewing appointment for this property or require further information.

- A property located in the desirable Iver area, offering excellent connectivity and potential for both residential occupation and investment
- Local schools, shops, and amenities within easy reach
- 3 Bathrooms
- Good road links via M25, M40, and Heathrow Airport
- 5 Bedrooms
- Double Garage

Discover this exceptional five-bedroom detached home on Old Slade Lane, Iver, offering over 2,799 sq ft of beautifully designed living space, including a double garage.

The ground floor is thoughtfully arranged for modern family life, featuring a bright and spacious living room with French doors to the garden, a dedicated study, and a versatile TV/playroom. At its heart, the stunning kitchen and dining room boasts a central island and direct garden access, creating the perfect setting for everyday living and entertaining. A utility room, guest cloakroom, and integral double garage provide added convenience.

Upstairs, you'll find five generous bedrooms. The principal and second bedrooms each benefit from en-suite bathrooms, while the remaining rooms offer flexibility for family, guests, or home office use. A stylish family bathroom and ample fitted storage complete the first floor.

With its spacious layout, contemporary finishes, and balance of open-plan living and private retreats, this home offers the perfect blend of comfort, style, and practicality.



These particulars, whilst believed to be accurate are set out as a general outline only for guidance and do not constitute any part of an offer or contract. Intending purchasers should not rely on them as statements of representation of fact, but must satisfy themselves by inspection or otherwise as to their accuracy. No person in this firm's employment has the authority to make or give any representation or warranty in respect of the property.