



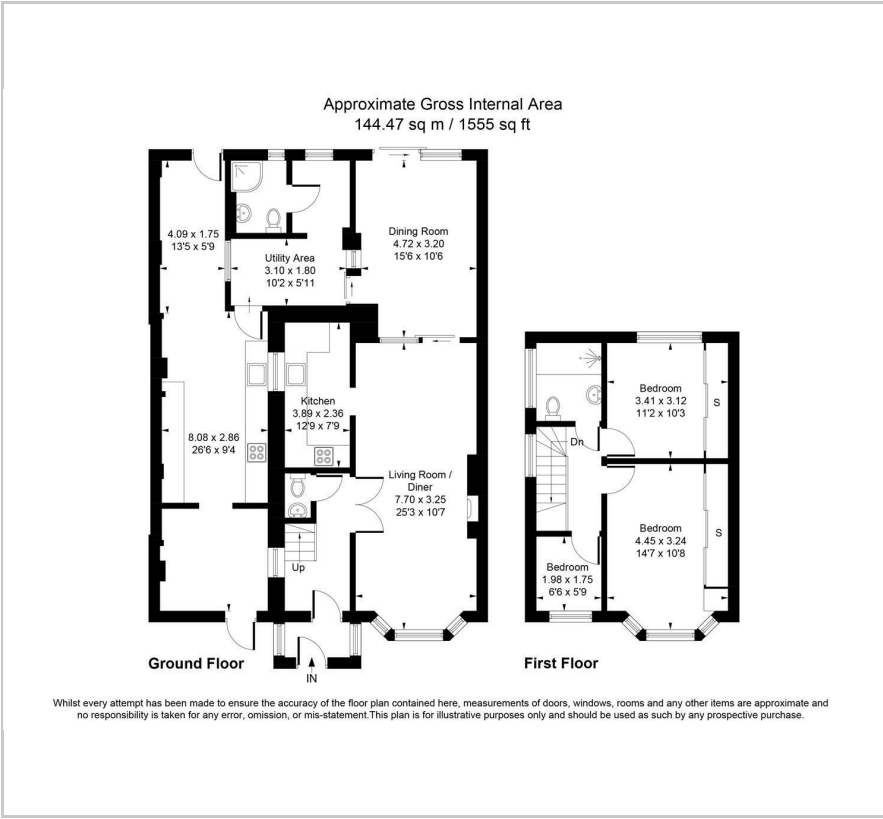
MOVE INN ESTATES
MAKING THE RIGHT MOVE



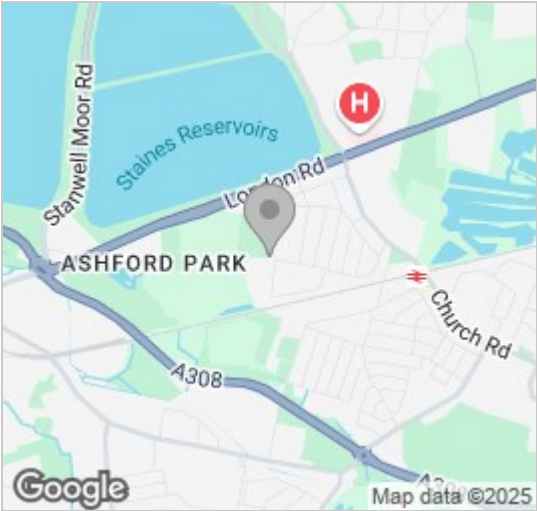
Station Crescent
Ashford, TW15 3HN
Price Guide £650,000



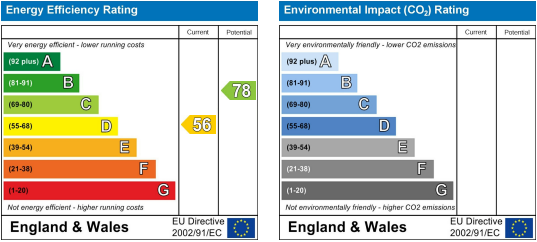
Floor Plan



Area Map



Energy Efficiency Graph



Viewing

Please contact our Move Inn Estates - Sales Office on 0208 574 4966 if you wish to arrange a viewing appointment for this property or require further information.

- Extended Family Home
- Two Bathrooms
- Potential to extend further (STPP)
- Three Bedrooms
- Large Driveway
- Close to schools

A spacious and extended three-bedroom end-of-terrace family home, ideally located within close proximity to local schools, parks, and Ashford Mainline Train Station.

This well-presented property features a welcoming front porch, a bright through lounge/diner, an additional reception room, a separate kitchen, utility room, and a ground floor shower room. Upstairs comprises three good-sized bedrooms and a modern family bathroom. Externally, the home benefits from a generous rear garden, a garage, and off-street parking.

Station Crescent is situated in a highly convenient and sought-after part of Ashford, Surrey, known for its strong sense of community, excellent transport links, and access to everyday amenities. The property is just a short distance from Ashford Mainline Station, providing direct rail services into London Waterloo, making it ideal for commuters.

Families are well-catered for, with a number of well-regarded local schools nearby, including both primary and secondary options. The area also offers a choice of green spaces and parks, perfect for walking, cycling, or family outings.

Ashford's town centre is within easy reach, offering a variety of shops, cafes, and supermarkets for everyday needs. For larger retail options, Staines-upon-Thames and Kingston are just a short drive away.

Viewings advised.



These particulars, whilst believed to be accurate are set out as a general outline only for guidance and do not constitute any part of an offer or contract. Intending purchasers should not rely on them as statements of representation of fact, but must satisfy themselves by inspection or otherwise as to their accuracy. No person in this firm's employment has the authority to make or give any representation or warranty in respect of the property.