



MOVE INN ESTATES

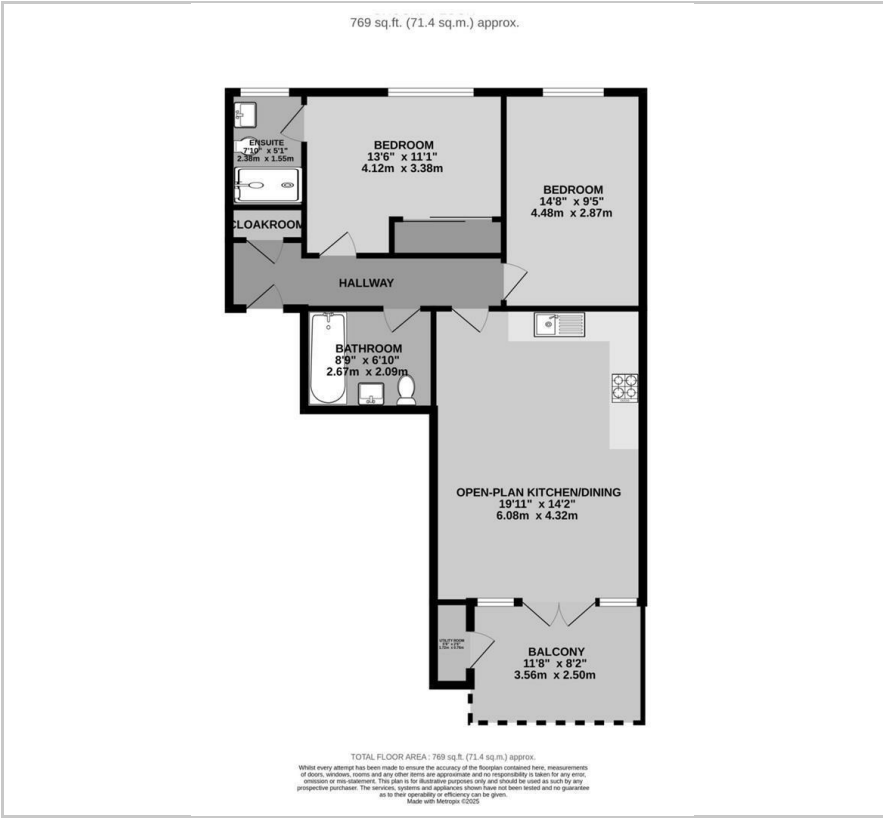
MAKING THE RIGHT MOVE



Havelock Road
Southall, UB2 4GG
Auction Guide £375,000



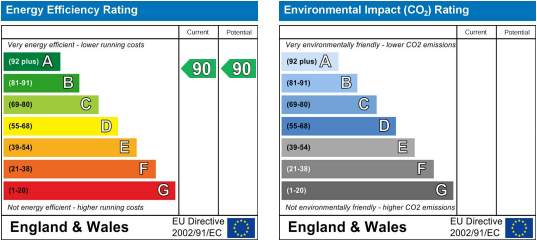
Floor Plan



Area Map



Energy Efficiency Graph



Viewing

Please contact our Move Inn Estates - Sales Office on 0208 574 4966 if you wish to arrange a viewing appointment for this property or require further information.

- Second Floor Apartment
- Excellent Condition
- Open Plan
- Long Lease
- Lift Access
- Excellent Location



Move Inn Estates is delighted to present this stylish and well-maintained 2-bedroom flat on the 2nd floor of Rudderstock House, Havelock Road, Southall. Offering a spacious open-plan kitchen and living area, this property is perfect for comfortable living and entertaining.

The flat features two well-proportioned bedrooms, including a master bedroom with an en-suite, along with a modern family bathroom. A private balcony provides outdoor space, while a utility room adds convenience with extra storage and laundry facilities. Lift access ensures easy entry to the second floor.

- Service charge: £255/month (includes ground rent)
- Lease remaining: 244 years

Situated in a vibrant and well-connected area, Southall Station is within walking distance, offering quick access to Central London. Local amenities include Tesco Extra, Lidl, and an array of shops, cafes, and restaurants. Southall Park provides nearby green space for relaxation, while excellent road links to the A40 and M4 enhance accessibility.

This property is an excellent opportunity for first-time buyers and investors alike. Contact us today to arrange a viewing!

These particulars, whilst believed to be accurate are set out as a general outline only for guidance and do not constitute any part of an offer or contract. Intending purchasers should not rely on them as statements of representation of fact, but must satisfy themselves by inspection or otherwise as to their accuracy. No person in this firms employment has the authority to make or give any representation or warranty in respect of the property.