



MOVE INN ESTATES

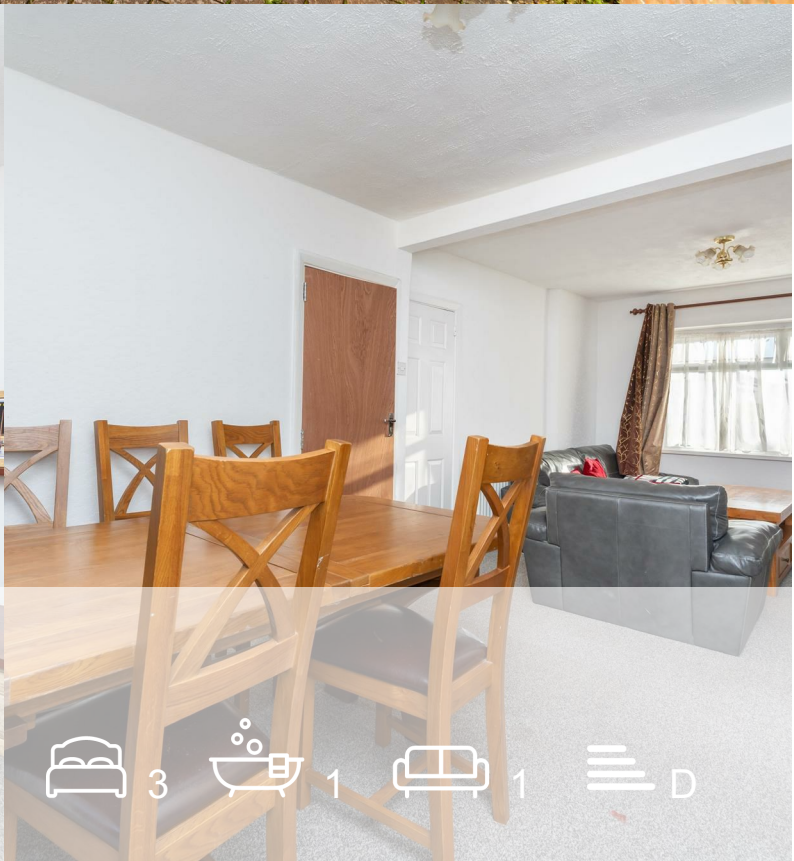
MAKING THE RIGHT MOVE



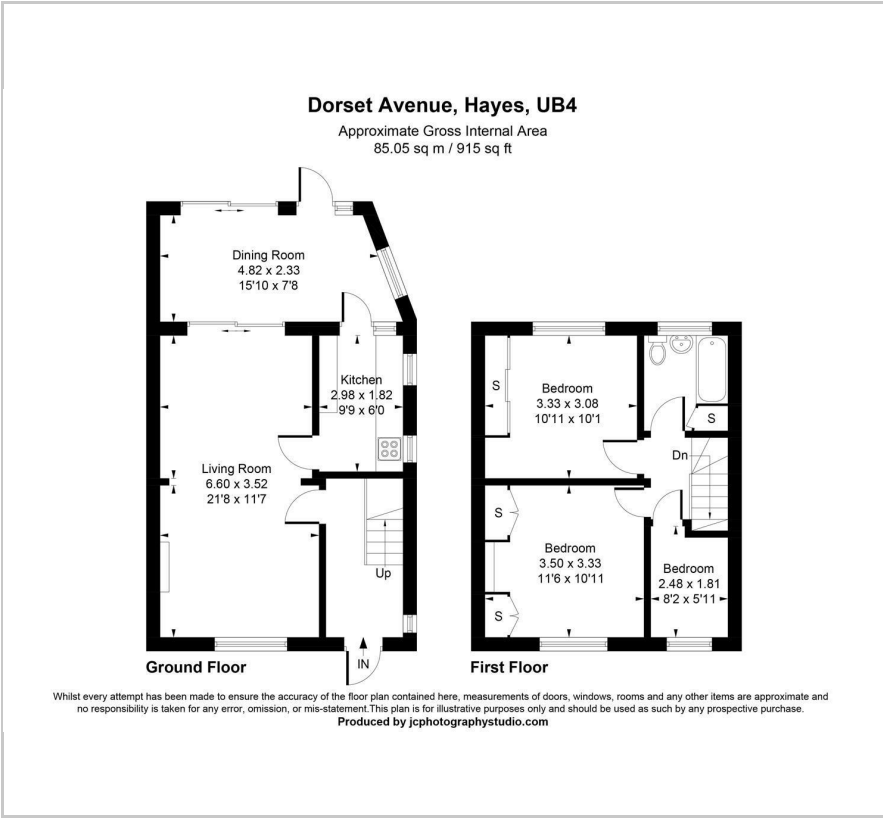
Dorset Avenue

, Hayes, UB4 8NR

Price Guide £519,000



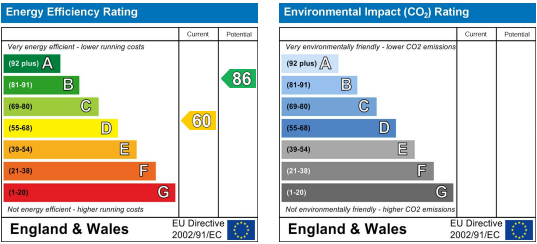
Floor Plan



Area Map



Energy Efficiency Graph



Viewing

Please contact our Move Inn Estates - Sales Office on 0208 574 4966 if you wish to arrange a viewing appointment for this property or require further information.

- Semi-detached
- Chain free
- Driveway
- Three bedrooms
- Spacious Garden
- Potential to extend (STPP)



CHIAN FREE* Move Inn Estates offer to the market this spacious, three bedroom semi-detached family home located on Dorset Avenue, heart of Hayes close to local amenities, transport links and excellent schools.

On the ground floor, the home features a bright and airy living room, perfect for relaxation and entertaining. The adjoining dining room provides a versatile space for meals and gatherings, while the kitchen offers practicality and convenience with direct access to the garden.

The first floor comprises three well-proportioned bedrooms, each designed for comfort and functionality. A family bathroom completes this level, ensuring convenience for all household members. The property also benefits from built-in storage, adding practicality to the overall layout.

Located in a desirable part of Hayes, Dorset Avenue offers easy access to local amenities, schools, and green spaces, making it a fantastic choice for families. Excellent transport links, including nearby road and rail connections, provide seamless access to Central London, Heathrow Airport, and surrounding areas.

Viewings advised.

These particulars, whilst believed to be accurate are set out as a general outline only for guidance and do not constitute any part of an offer or contract. Intending purchasers should not rely on them as statements of representation of fact, but must satisfy themselves by inspection or otherwise as to their accuracy. No person in this firms employment has the authority to make or give any representation or warranty in respect of the property.