



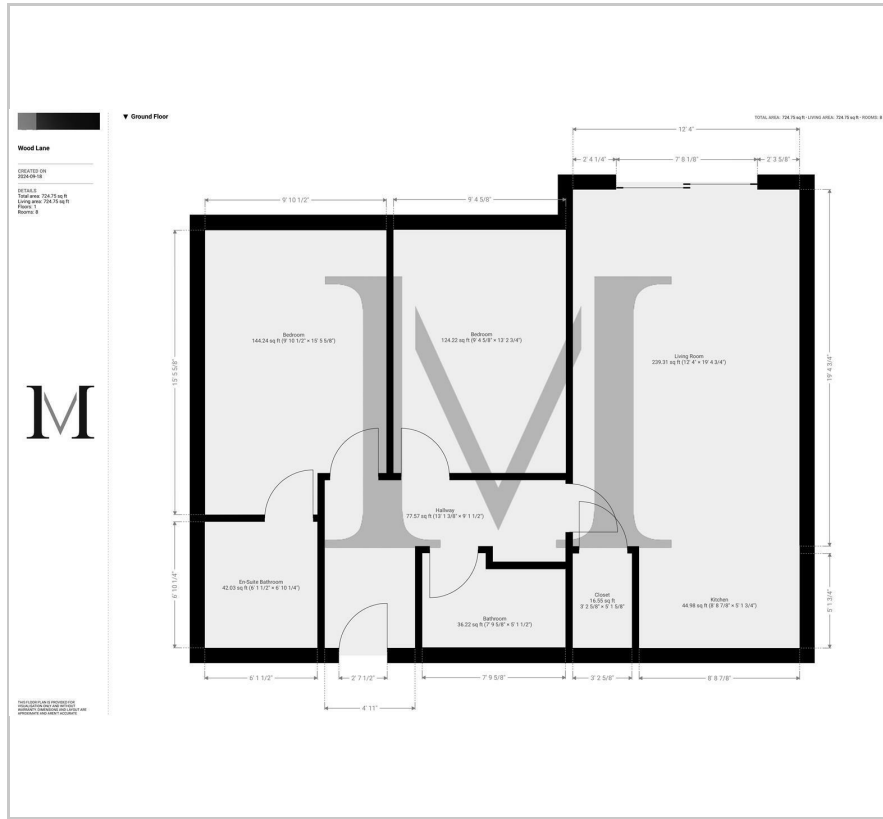
**MOVE INN ESTATES**  
MAKING THE RIGHT MOVE



**Wood Lane**  
Isleworth, TW7 5EH  
£2,800 Per Month

2 2 1 B

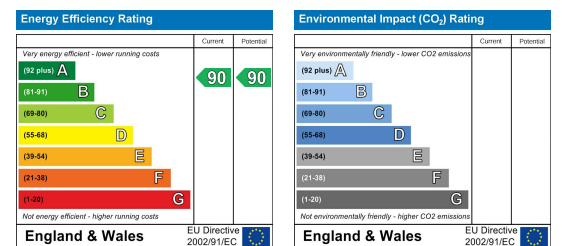
## Floor Plan



## Area Map



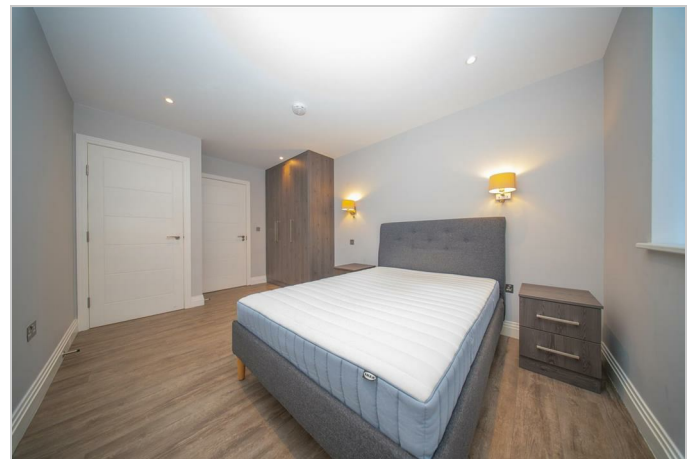
## Energy Efficiency Graph



## Viewing

Please contact our Move Inn Estates - Sales Office on 0208 574 4966 if you wish to arrange a viewing appointment for this property or require further information.

- Spacious two-bedroom ground-floor flat, fully furnished with modern décor.
- Well-equipped kitchen with high-end appliances and ample counter space.
- Private outdoor terrace, ideal for relaxing or dining al fresco.
- Bright and expansive living room, perfect for both relaxation and entertaining.
- Master bedroom with en-suite and a second spacious bedroom, both offering comfort and privacy.
- Prime location near Osterley Park and Isleworth Station, with allocated parking included.



Discover modern living at its finest with this stunning two-bedroom, ground-floor flat, fully furnished and perfectly situated in the heart of Wood Lane, Isleworth. Thoughtfully designed with comfort and style in mind, this spacious property offers everything you need for a relaxed and convenient lifestyle.

As you step inside, you'll be greeted by an expansive living room (299.31 sq. ft.), filled with natural light, making it the perfect setting for both entertaining guests and enjoying quiet evenings in. The sleek and fully equipped kitchen (44.58 sq. ft.) boasts modern appliances and ample counter space, ensuring that both everyday meals and culinary creations are a pleasure to prepare.

The flat features two generously sized bedrooms: a luxurious master bedroom (144.24 sq. ft.) with its own en-suite bathroom (42.03 sq. ft.), creating a private retreat for relaxation, and a second bedroom (124.22 sq. ft.), perfect for guests, a home office, or family members. A second modern bathroom (36.22 sq. ft.) adds to the convenience, while two closets offer excellent storage solutions.

Step outside to your own private terrace, a peaceful outdoor space ideal for al fresco dining or unwinding in the fresh air. With allocated parking, this property combines luxury with practicality in a prime location.

Located just moments from Osterley Park and Isleworth Station, the flat offers easy access to both green spaces and excellent transport links, making it a fantastic choice for commuters and nature lovers alike.

Don't miss the opportunity to call this beautiful flat your next home—early viewings are highly recommended!



These particulars, whilst believed to be accurate are set out as a general outline only for guidance and do not constitute any part of an offer or contract. Intending purchasers should not rely on them as statements of representation of fact, but must satisfy themselves by inspection or otherwise as to their accuracy. No person in this firm's employment has the authority to make or give any representation or warranty in respect of the property.