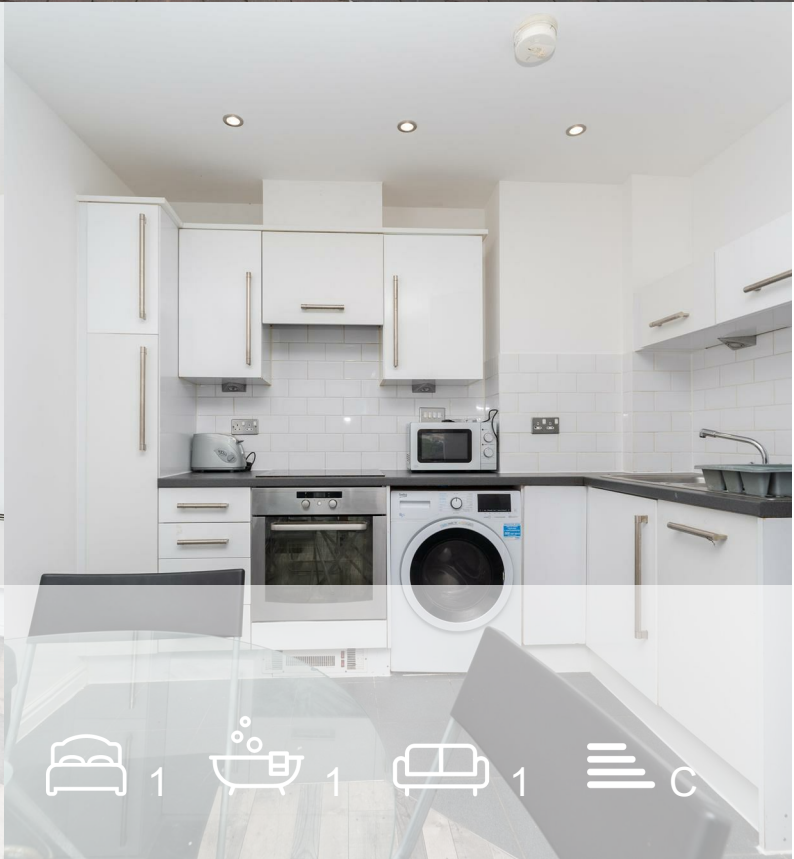




**MOVE INN ESTATES**  
MAKING THE RIGHT MOVE

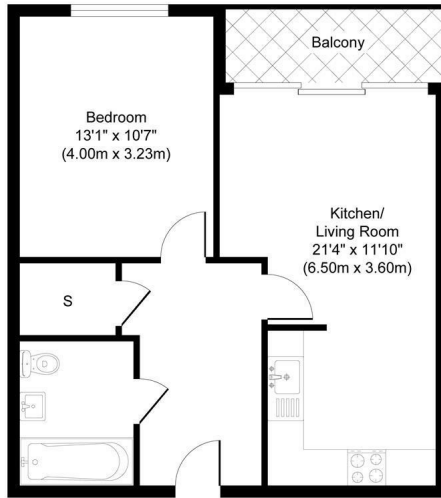


**Prince Regent Road**  
Hounslow, TW3 1ND  
Price Guide £260,000



## Floor Plan

### Unit 2, Maple Grove Lawrence Road TW4 6DR



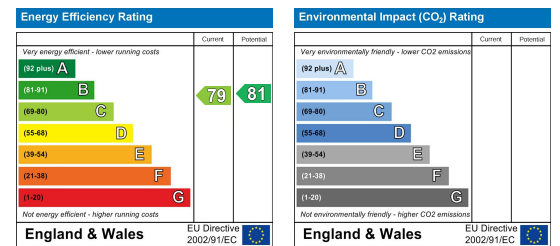
Approximate Gross Internal Floor Area 530.05 sq. ft / 49.24 sq. m

Illustration for identification purposes only, measurements are approximate, not to scale.  
produced by jcphotographystudio.com

## Area Map



## Energy Efficiency Graph



## Viewing

Please contact our Move Inn Estates - Sales Office on 0208 574 4966 if you wish to arrange a viewing appointment for this property or require further information.

- Modern One Bed Apartment
- Newly Refurbished
- 24 Hour Concierge
- Walking Distance to Transport Links
- Local Amenities
- Lift Access
- Private Balcony
- No Onward Chain

Move Inn Estates brings to the market this spacious, newly built one-bedroom apartment in the exclusive High Street Quarter development. Located on the upper floors, this property offers stunning views of the London skyline. It is ideal for first-time buyers and investors alike, and it is offered to the market with no onward chain.

Ideally positioned for the amenities and transport links of Hounslow, this wonderful one-bedroom flat features a spacious open-plan reception room, a sleek fitted kitchen, family bathroom and ample storage space.

This apartment is just moments from Hounslow East station (Piccadilly line) and the High Street, which features a variety of shops, bars, and restaurants. The area boasts excellent amenities and provides easy access to the A4/M4 for convenient travel in and out of London.



These particulars, whilst believed to be accurate are set out as a general outline only for guidance and do not constitute any part of an offer or contract. Intending purchasers should not rely on them as statements of representation of fact, but must satisfy themselves by inspection or otherwise as to their accuracy. No person in this firm's employment has the authority to make or give any representation or warranty in respect of the property.

46 Vicarage Farm Road, Hounslow, Middlesex, TW5 0AB

Tel: 0208 574 4966 Email: [info@moveinnestates.co.uk](mailto:info@moveinnestates.co.uk) [www.moveinnestates.co.uk](http://www.moveinnestates.co.uk)