



MOVE INN ESTATES

MAKING THE RIGHT MOVE



Ely Road

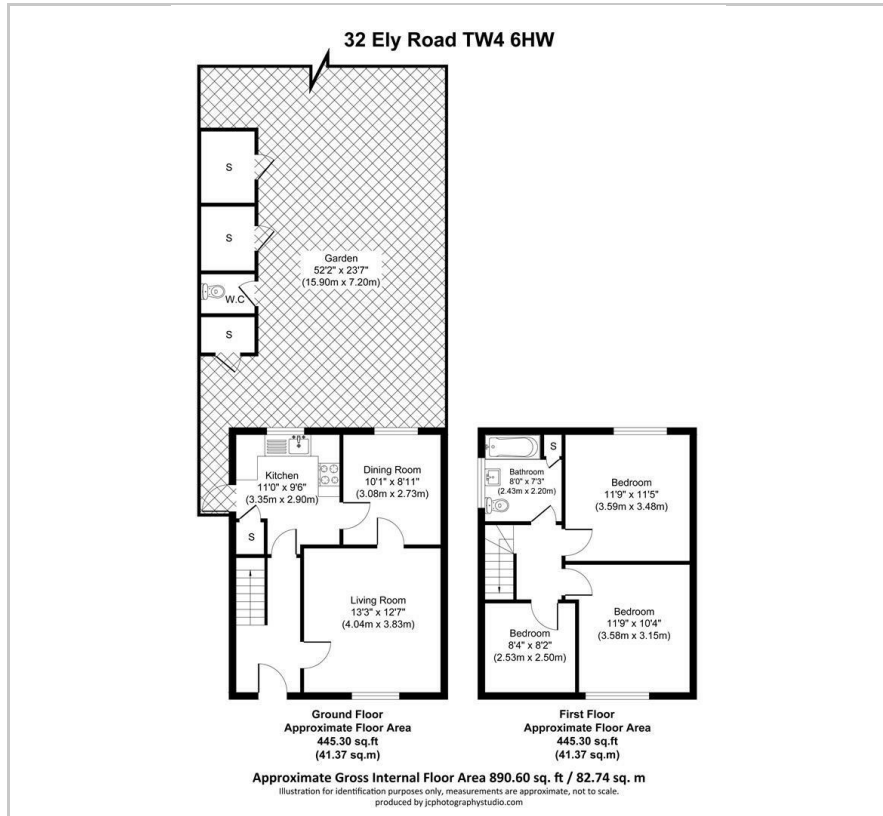
, Hounslow, TW4 6HW

Price Guide £500,000

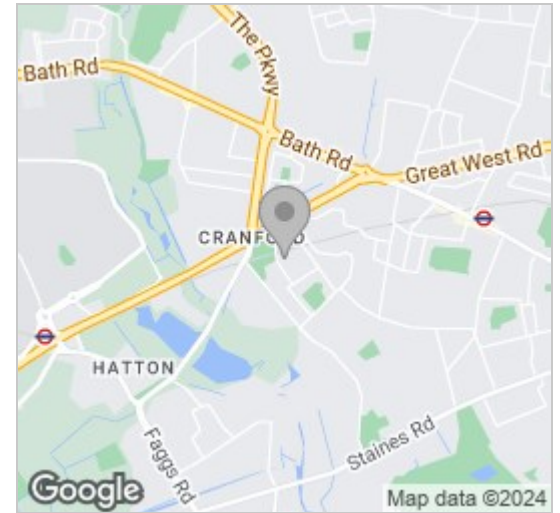


3 1 2

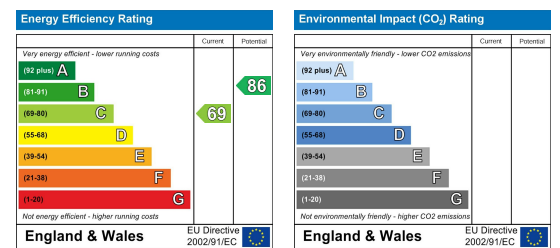
Floor Plan



Area Map



Energy Efficiency Graph



Viewing

Please contact our Move Inn Estates - Sales Office on 0208 574 4966 if you wish to arrange a viewing appointment for this property or require further information.

- 3 Bedroom Semi-Detached
- Scope To Extend (STTP)
- Ideal For Investors
- Great Location
- Close To Train Links

Move Inn Estates introduces this newly listed property to the market, we present a three-bedroom semi-detached house in its un-extended state, awaiting modernization. This residence is conveniently situated near Hounslow West Station, Hatton Cross, and local amenities.

This property features a generously sized entrance area, a front living room, a separate dining room, and a galley kitchen. Upstairs, you'll find three bedrooms and a family bathroom suite. Additionally, the property boasts a spacious garden and on-road parking. There's also the potential for extension (subject to planning permission).

We strongly recommend scheduling viewings to explore the property's potential firsthand.



These particulars, whilst believed to be accurate are set out as a general outline only for guidance and do not constitute any part of an offer or contract. Intending purchasers should not rely on them as statements of representation of fact, but must satisfy themselves by inspection or otherwise as to their accuracy. No person in this firm's employment has the authority to make or give any representation or warranty in respect of the property.