



# MOVE INN ESTATES

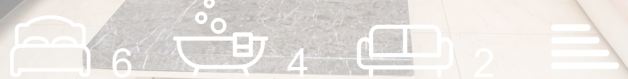
MAKING THE RIGHT MOVE



## Burns Way

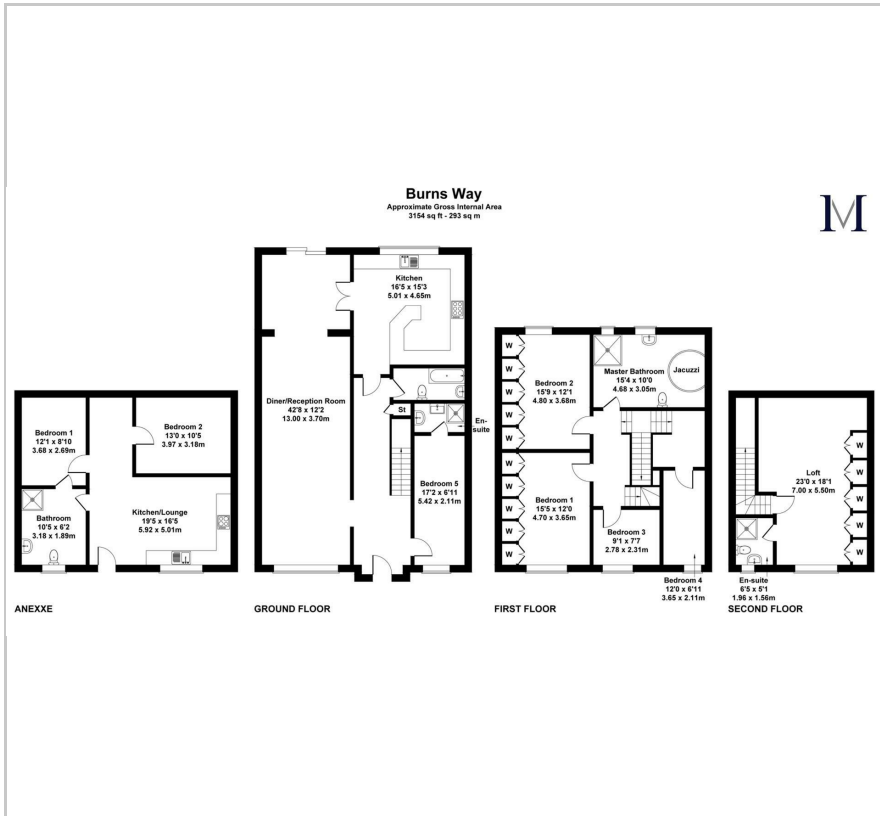
, Heston, TW5 9BA

Offers In The Region Of £1,050,000





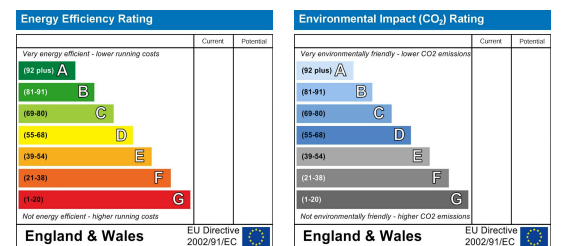
## Floor Plan



## Area Map



## Energy Efficiency Graph



## Viewing

Please contact our Move Inn Estates - Sales Office on 0208 574 4966 if you wish to arrange a viewing appointment for this property or require further information.

- Six bedrooms
- Rear Annex
- Immaculate condition
- Extended
- Large driveway
- Excellent location



Presented by Move Inn Estates, this immaculate six-bedroom family home is situated on the renowned road in Heston, offering a generous living space spanning 3,154 sq ft.

The property boasts six spacious bedrooms, four bathrooms, a large reception room, a well-appointed kitchen with an island, and a rear dining area. Additional features include parking space for three cars, a spacious rear annex with two additional bedrooms and a bathroom suite, a sizable rear garden, and convenient proximity to local shops and amenities.

The location of the property provides easy access to esteemed educational institutions such as Heston High School, Cranford Community College, and Springwell Junior School. Excellent transport links to Heathrow Airport, Hounslow West Tube Station, and major motorways including the M4 and M25 further enhance its appeal.

Viewings are highly recommended to fully appreciate the charm and potential of this exceptional property.



These particulars, whilst believed to be accurate are set out as a general outline only for guidance and do not constitute any part of an offer or contract. Intending purchasers should not rely on them as statements of representation of fact, but must satisfy themselves by inspection or otherwise as to their accuracy. No person in this firm's employment has the authority to make or give any representation or warranty in respect of the property.