



MOVE INN ESTATES

MAKING THE RIGHT MOVE



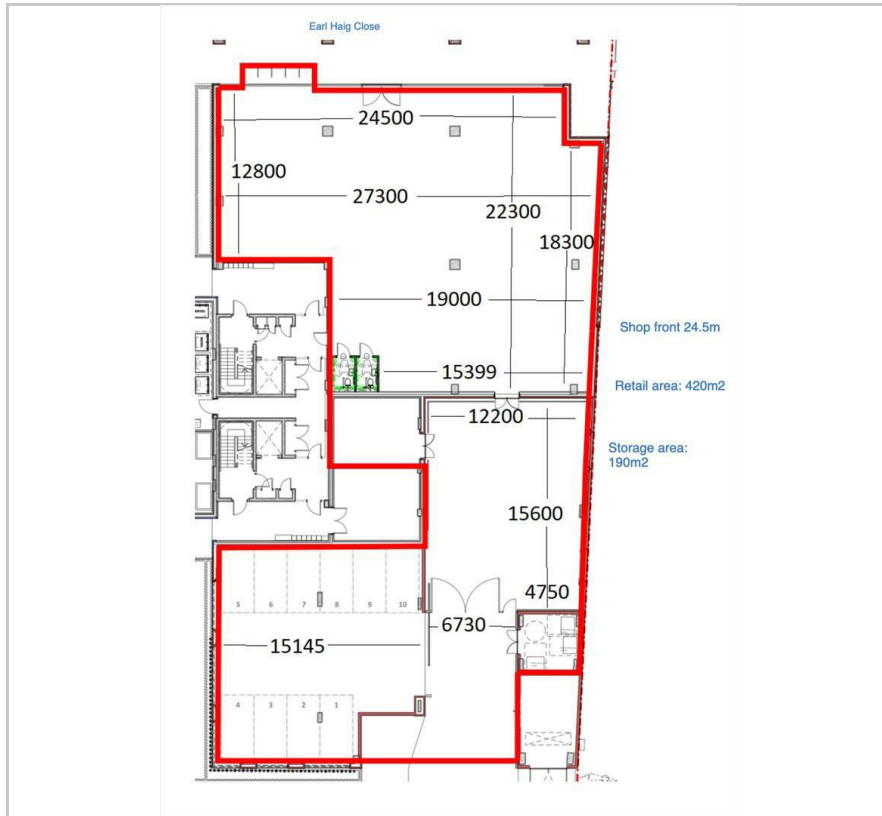
Earl Haig Close

, Hounslow, TW4 7BJ

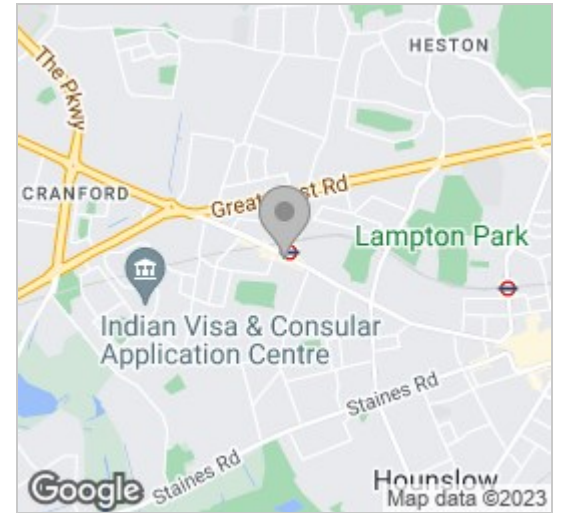
£225,000 Per Annum



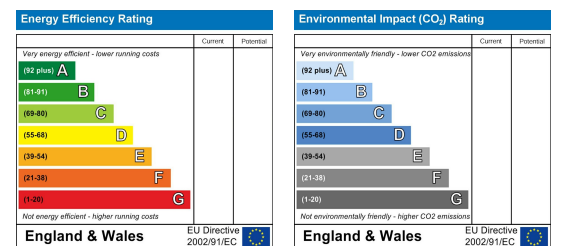
Floor Plan



Area Map



Energy Efficiency Graph



Viewing

Please contact our Move Inn Estates - Sales Office on 0208 574 4966 if you wish to arrange a viewing appointment for this property or require further information.

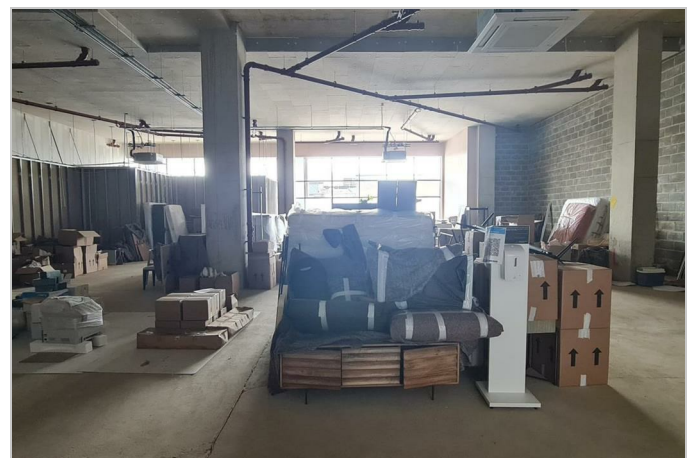
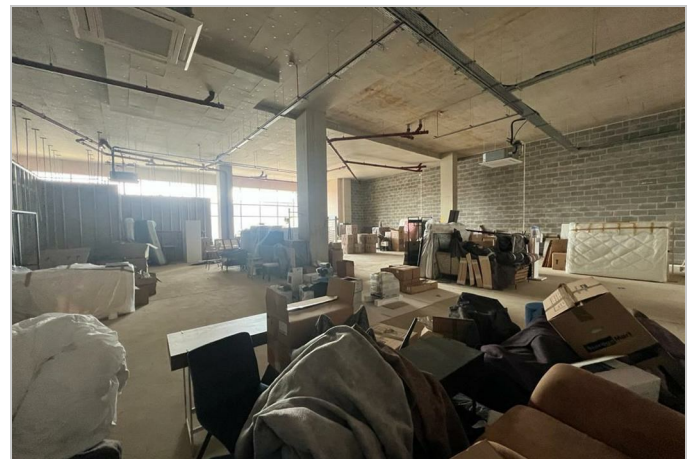
- Shop Front - 24.5m
- Storage Area - 190m²
- X6 Parking spaces
- Gated Entrance
- Retail Area - 420m²
- P.O.A
- Loading Bay

Welcome to our latest commercial property offering on Earl Haig Close, opposite the Hounslow West Station. This is a fantastic opportunity for supermarkets looking to expand or relocate their business to a prime location with a proven track record of success.

This fantastic unit, formerly used by a well renowned grocery store; boasts ample space for all your commercial needs, including parking and off-loading bays for easy transport and storage. With plenty of room for your inventory, equipment, and supplies, you'll have everything you need to run your business smoothly and efficiently.

The location of this commercial unit is unbeatable. Earl Haig Close has great transport links, allowing for easy access to major roads and public transport. This means that your customers and employees will have no trouble getting to your store, making it a convenient choice for everyone.

Don't miss out on this opportunity to take your business to the next level. Contact us today to schedule a viewing and see all the potential that this commercial unit has to offer.



These particulars, whilst believed to be accurate are set out as a general outline only for guidance and do not constitute any part of an offer or contract. Intending purchasers should not rely on them as statements of representation of fact, but must satisfy themselves by inspection or otherwise as to their accuracy. No person in this firm's employment has the authority to make or give any representation or warranty in respect of the property.

46 Vicarage Farm Road, Hounslow, Middlesex, TW5 0AB

Tel: 0208 574 4966 Email: info@moveinnestates.co.uk www.moveinnestates.co.uk