



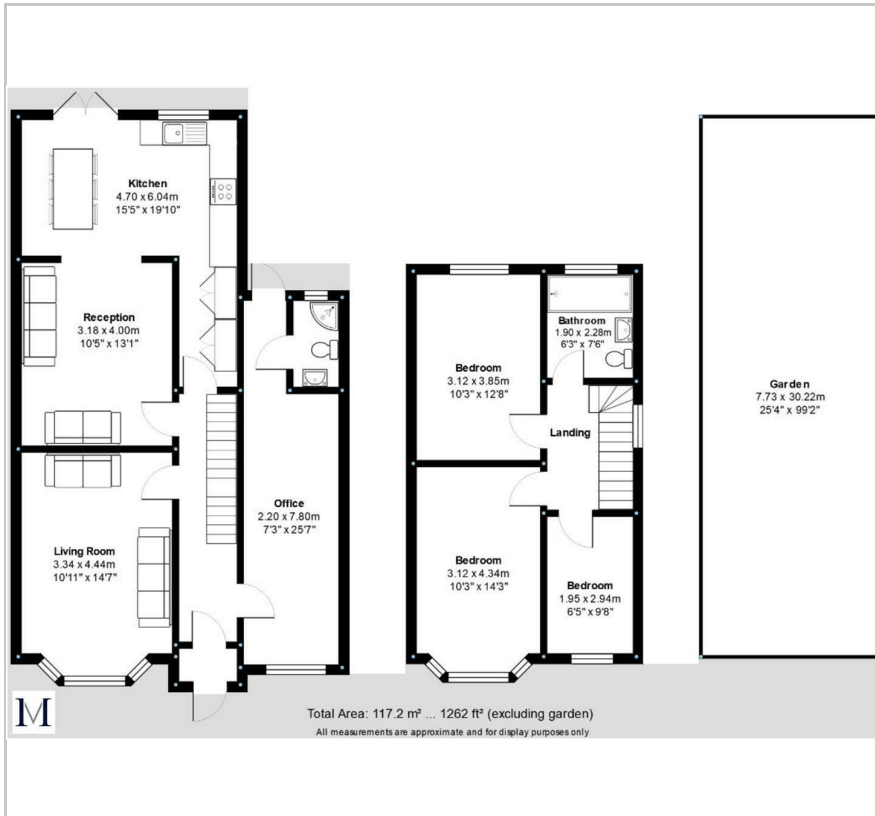
**MOVE INN ESTATES**  
MAKING THE RIGHT MOVE



**Springwell Road**  
, Hounslow, TW5 9BP  
Price Guide £675,000



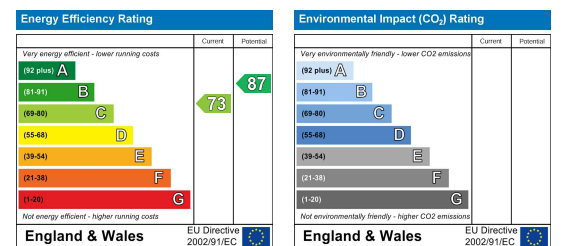
## Floor Plan



## Area Map



## Energy Efficiency Graph



## Viewing

Please contact our Move Inn Estates - Sales Office on 0208 574 4966 if you wish to arrange a viewing appointment for this property or require further information.

- End Terrace
- Four Bedrooms
- Large Garden
- Extended
- Further Potential To Extend (STPP)
- Driveway

New to the market with Move Inn Estates, we are delighted to present this extended four-bedroom, end-terraced family home, located on a popular road in Heston close to transport links and excellent schools.

This spacious home comprises of; a porch area, two spacious living rooms, a fitted kitchen/dining area, and a ground-floor bedroom with an en-suite shower room. The first floor lies three good size bedrooms and a bathroom suite. Further benefits include a large rear private garden, a spacious driveway, and offers brilliant potential to further extend (STPP)

Springwell Road is close by to local reputable schools such as Edison Primary, Springwell Primary School, and Westbrook Primary School. There are easy transport links of bus services H29, 482, and H32 providing service to Heathrow and Hounslow Underground Piccadilly Line. Easy links A4 Central London, M4, M25 London Orbital. Local shops, takeaways, green parks, libraries, and gyms are within walking distance.

Viewings advised.



These particulars, whilst believed to be accurate are set out as a general outline only for guidance and do not constitute any part of an offer or contract. Intending purchasers should not rely on them as statements of representation of fact, but must satisfy themselves by inspection or otherwise as to their accuracy. No person in this firm's employment has the authority to make or give any representation or warranty in respect of the property.