



Horton Road, E8

£1,500,000

Dexters



Horton Road, London, E8

A recently renovated four double bedroom end-of-terrace period house featuring a double reception, an eat-in kitchen leading onto a courtyard, large sash windows and wooden flooring throughout.

The house features approximately 1,972 square feet of living space spread over four floors, with a private courtyard making it an ideal family home.

As you enter the house and follow the generous sized hallway, you are greeted to a large double reception room with large sash windows that leads onto the extended kitchen dining room with floor to ceiling glass doors and private courtyard.

Following the stairs to the first floor you will find the full-width master bedroom, a double bedroom and a family bathroom. A further two double bedrooms occupy the second floor and another bathroom. An additional office/ storage space occupies the loft.

Located on a quiet street leading off London Fields with endless shops and amenities to choose from, including Broadway Market on the weekend. Hackney Central and London Fields overground stations are less than half a mile away.

Features

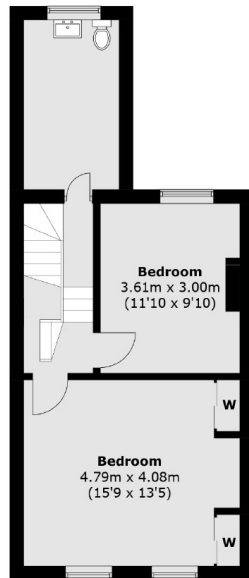
- End Of Terrace
- Sky Lights
- Eaves Storage
- Porch Area
- London Fields
- Local Markets



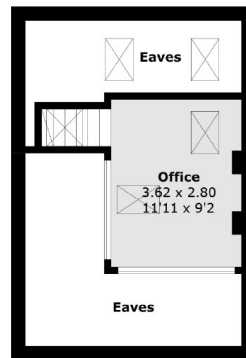




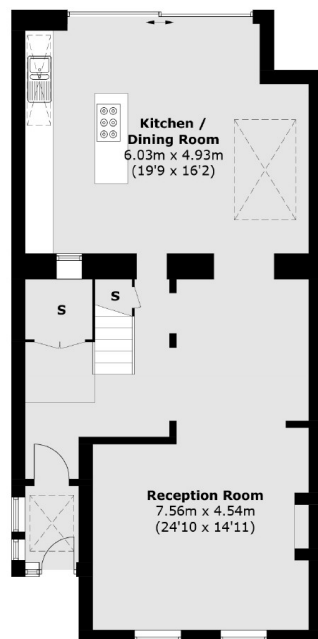
Horton Road, London, E8



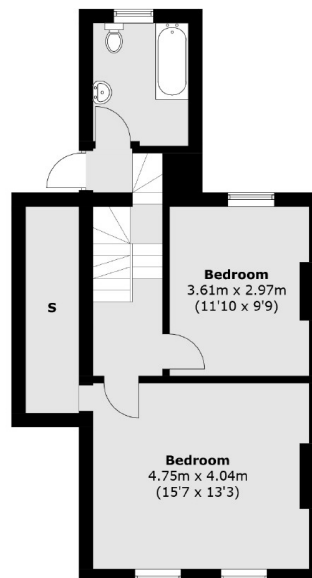
Second Floor



Third Floor



Ground Floor



First Floor

Total area (approx.): 183.3 sq. m (1972.9 sq. ft)
(Excluding Eaves)