



Silkmills Square, E9

£426 Per week

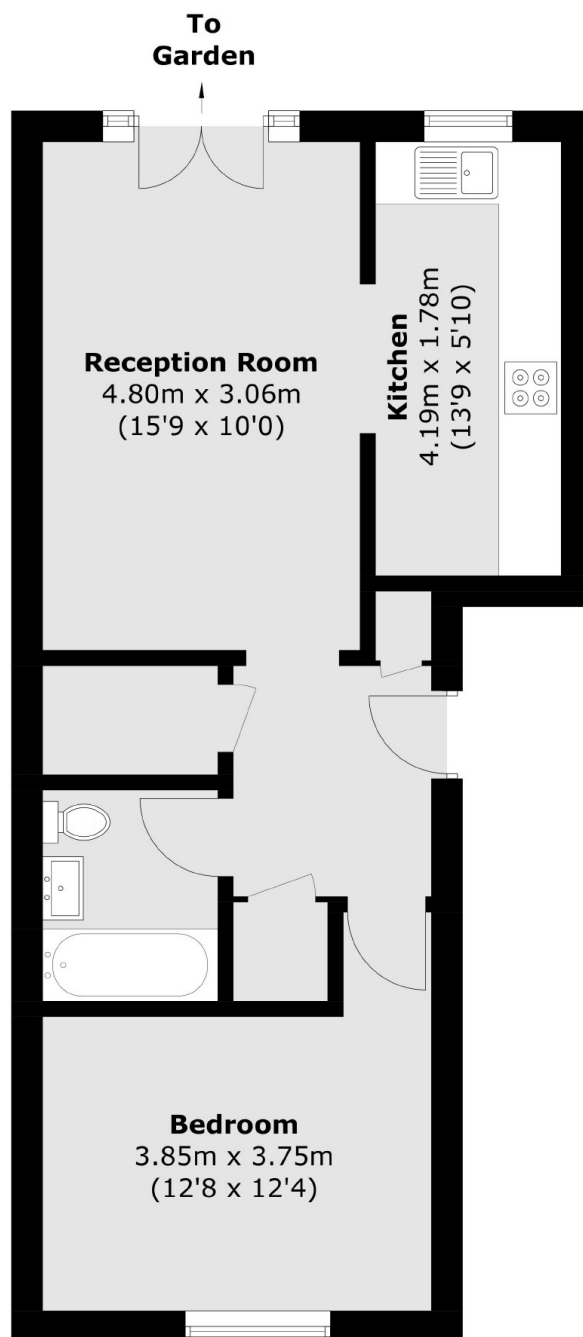
A large one double bedroom apartment within a quiet residential mews close to Hackney Wick. This ground floor property features a large private garden as well as dark wood effect flooring and character chesterfield.

Silkmills Square is a peaceful residential mews situated directly adjacent to the River Lee Navigation. Nearest transport includes Hackney Wick overground station as well as Hackney Wick green nearby.

Features

- One Double Bedroom
- Quiet Residential Mews
- Private Garden
- Separate Kitchen
- Wooden Flooring
- Furnished

Silkmills Square, London, E9



Total area (approx.): 47.9 sq. m (515.6 sq. ft)