



## Victoria Park Road, E9

£675,000

A two double bedroom maisonette with a private east facing garden on Victoria Park Road. This property has a well maintained living room with dedicated dining space, separate kitchen and generous storage. It has newly installed sash windows and upstairs has new flooring throughout.

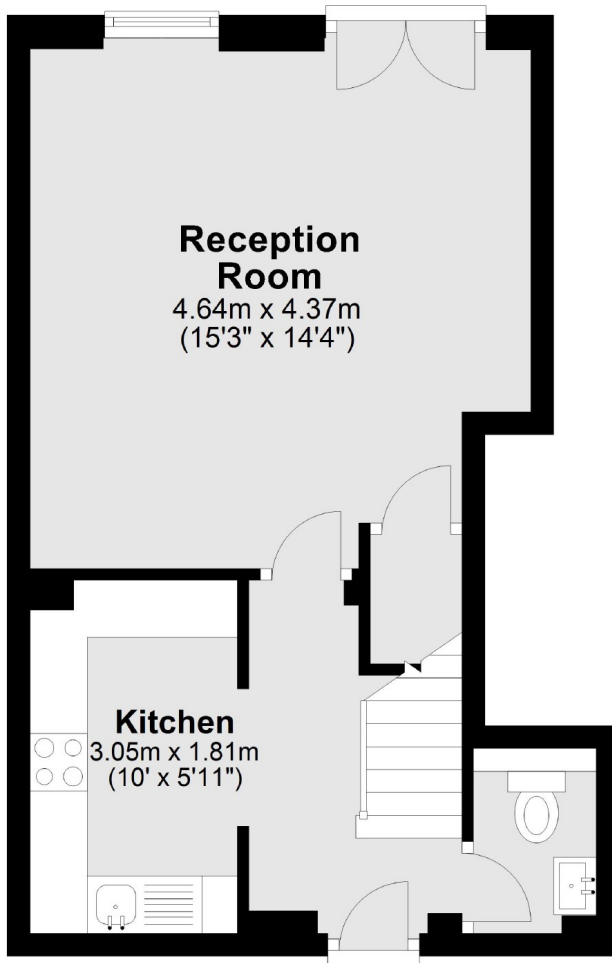
Located on Victoria park road 100 yards from Mare street, this property has an abundance of eateries, bars and shops close by. Broadway market is under half a mile walk and the nearest station is London Fields on the overground with easy access to the City.

### Features

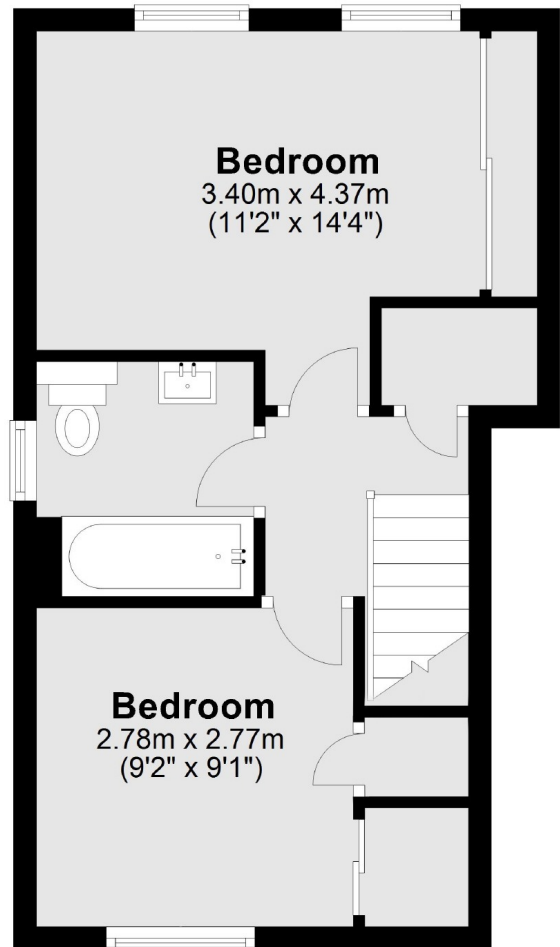
- Garage
- Two Double Bedrooms
- Private Garden
- Maisonette
- Victoria Park Road
- Separate Kitchen

# Victoria Park Road, London, E9

## Ground Floor



## First Floor



Total area: approx. 64.8 sq. metres (697.9 sq. feet)