



## Helmsley Street, E8

£625,000

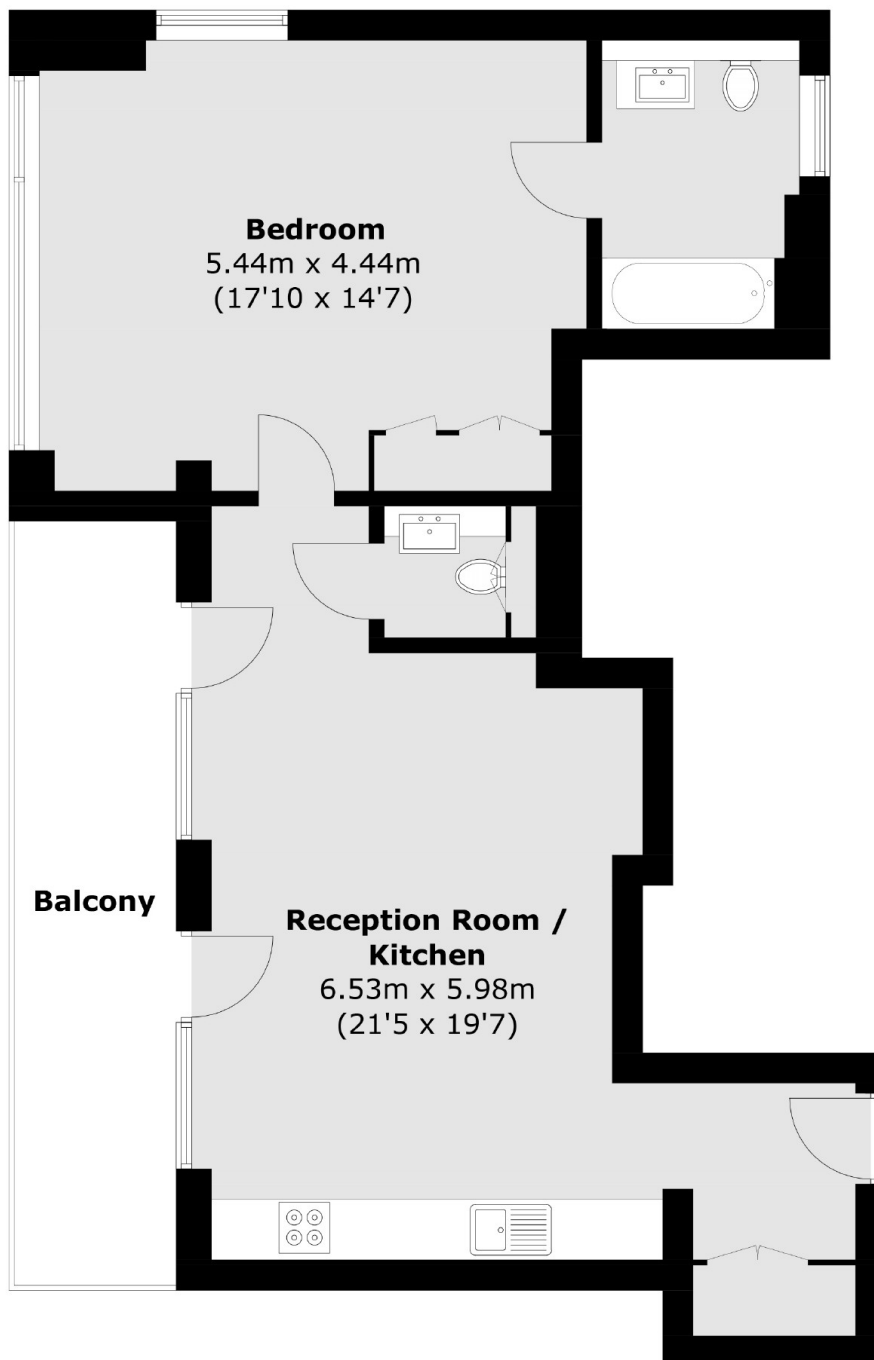
A modern industrial style one bedroom, one bathroom apartment with a open plan living and kitchen area, polished concrete floors and a private balcony. Within the building there is a 24 hour concierge, bike storage, bakery/coffee shop and a Michelin star restaurant.

Monohaus is situated perfectly around the corner from ample green spaces such as Victoria Park and London Fields and Broadway Market with all its boutique restaurants, bars and cafes. London Fields and Hackney Central stations are both less than half a mile away for easy access to the City as well as great bus routes and access to the Underground via Bethnal Green.

### Features

Offers In Excess Of  
One Bedroom  
Additional Separate WC  
Private Balcony  
24 Hour Concierge  
Sonos Home System

# Helmsley Street, London, E8



Total area (approx.): 65.0 sq. m (699.7 sq. ft)  
Balcony area : 12.1 sq. m (130.2 sq. ft)