



Bow Road, E3

£1,269 Per week

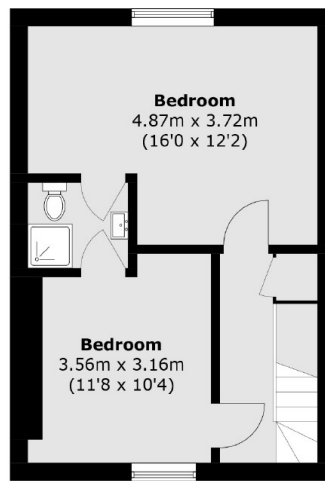
Situated on Bow Road, this five double bedroom terrace house is spread over five floors with two reception rooms, two bathrooms, original stripped floors throughout and a huge landscaped garden,

Centrally located within easy reach of Mile End and Victoria Park for all local cafés, restaurants and independent stores.

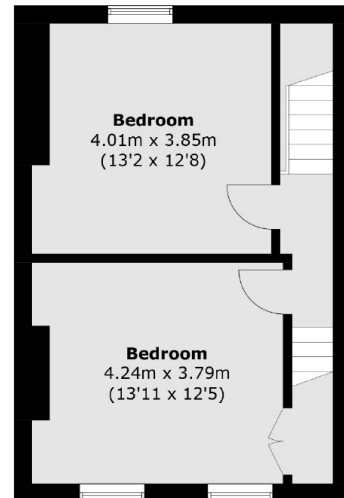
Features

- Five Double Bedrooms
- Two Bathrooms
- Double Reception
- Terrace House
- Sash Windows
- Furnished

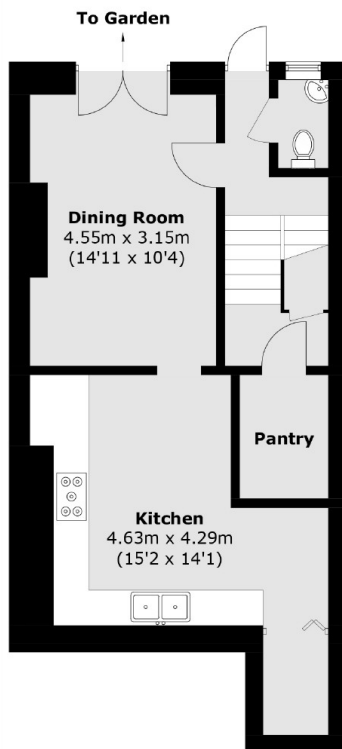
Bow Road,
London, E3



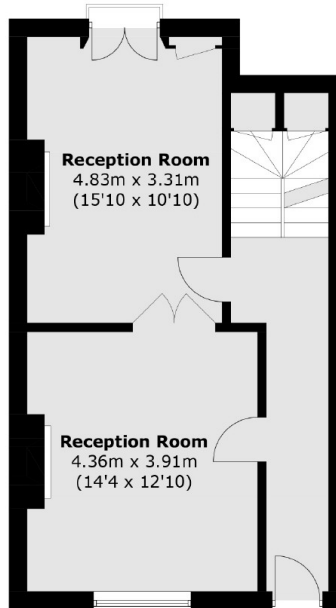
Third Floor



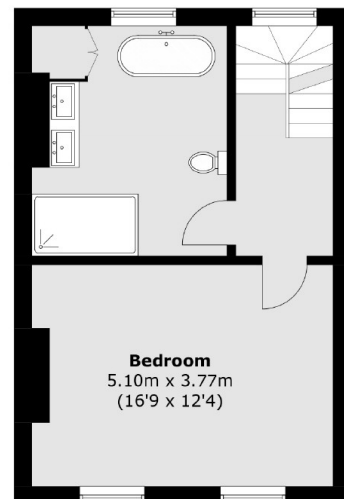
Second Floor



Lower Ground Floor



Ground Floor



First Floor

Total area (approx.): 211.1 sq. m (2,272.2 sq. ft)

Dexters

Hackney
10 Broadway Market
London
E8 4QJ
Lettings
0207 247 2441

Energy Rating: D. We aim to make our particulars both accurate and reliable. However they are not guaranteed; nor do they form part of an offer or contract. If you require clarification on any points then please contact us, especially if you're traveling some distance to view. Please note that appliances and heating systems have not been tested and therefore no warranties can be given as to their good working order.

RICS Regulated
Estate Agent
and Letting Agent

dexters.co.uk