



Bundocks Walk, E3

£435,000

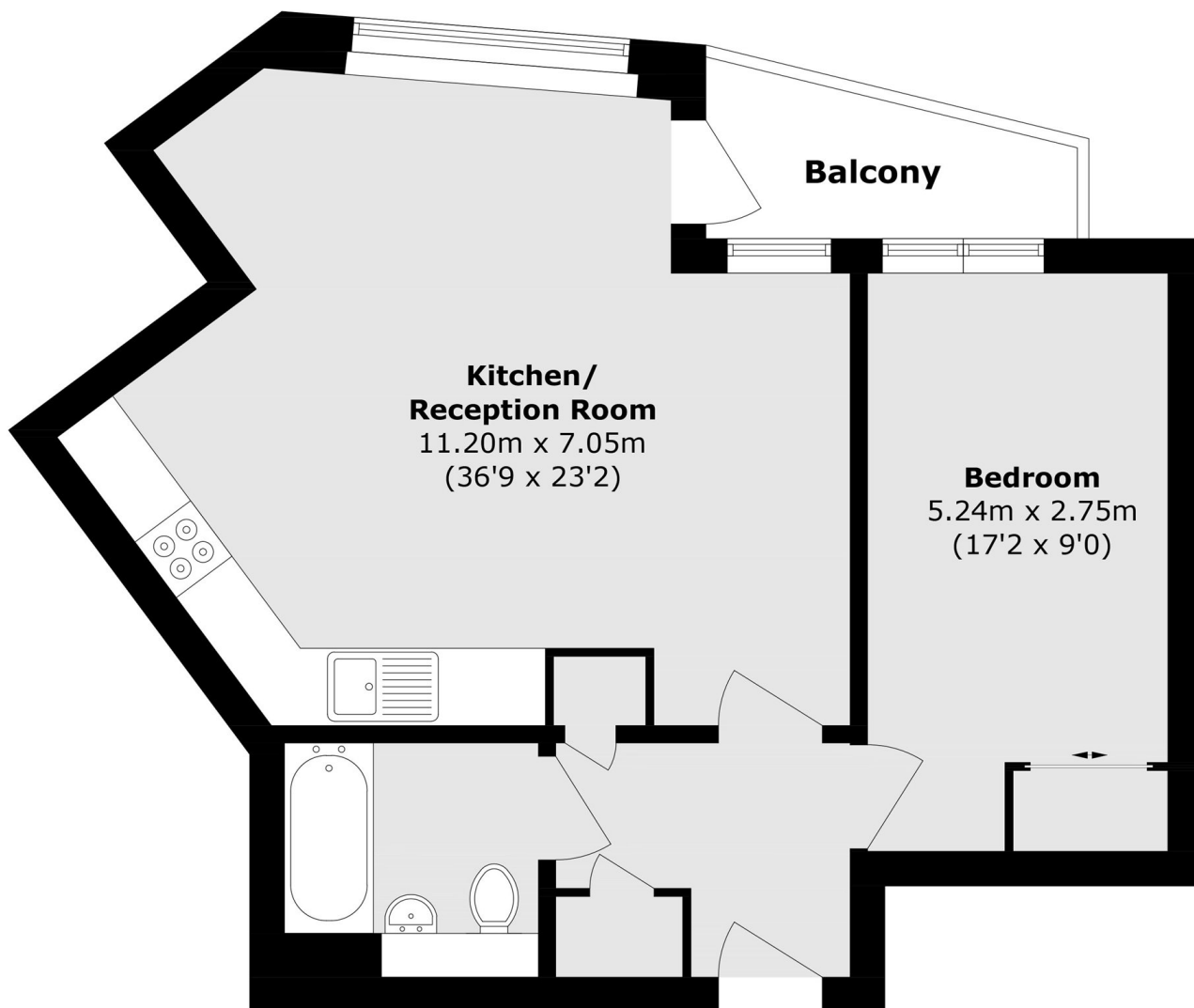
A one double bedroom apartment measuring in excess of 593 square feet with floor to ceiling windows and city views from a private balcony. This property has an open plan living room and kitchen with Amtico wooden flooring and space for dining. There is a modern bathroom and secure entry as well as lift access.

The property sits between Victoria Park and the Olympic Park and next to the River Lea. Hackney Wick overground station is just over half a mile away and Stratford Station and shopping centre just over a mile away.

Features

- Open Plan
- Modern Development
- City Views
- Measures over 593 Square foot
- Private Balcony
- Floor to Ceiling Windows

Bundocks Walk, London, E3



Total area (approx.): 55.1 sq. m (593.0 sq. ft)

Balcony area (approx.): 5.1 sq. m (54.8 sq. ft)