

Taylor Place, E3

£542 Per week

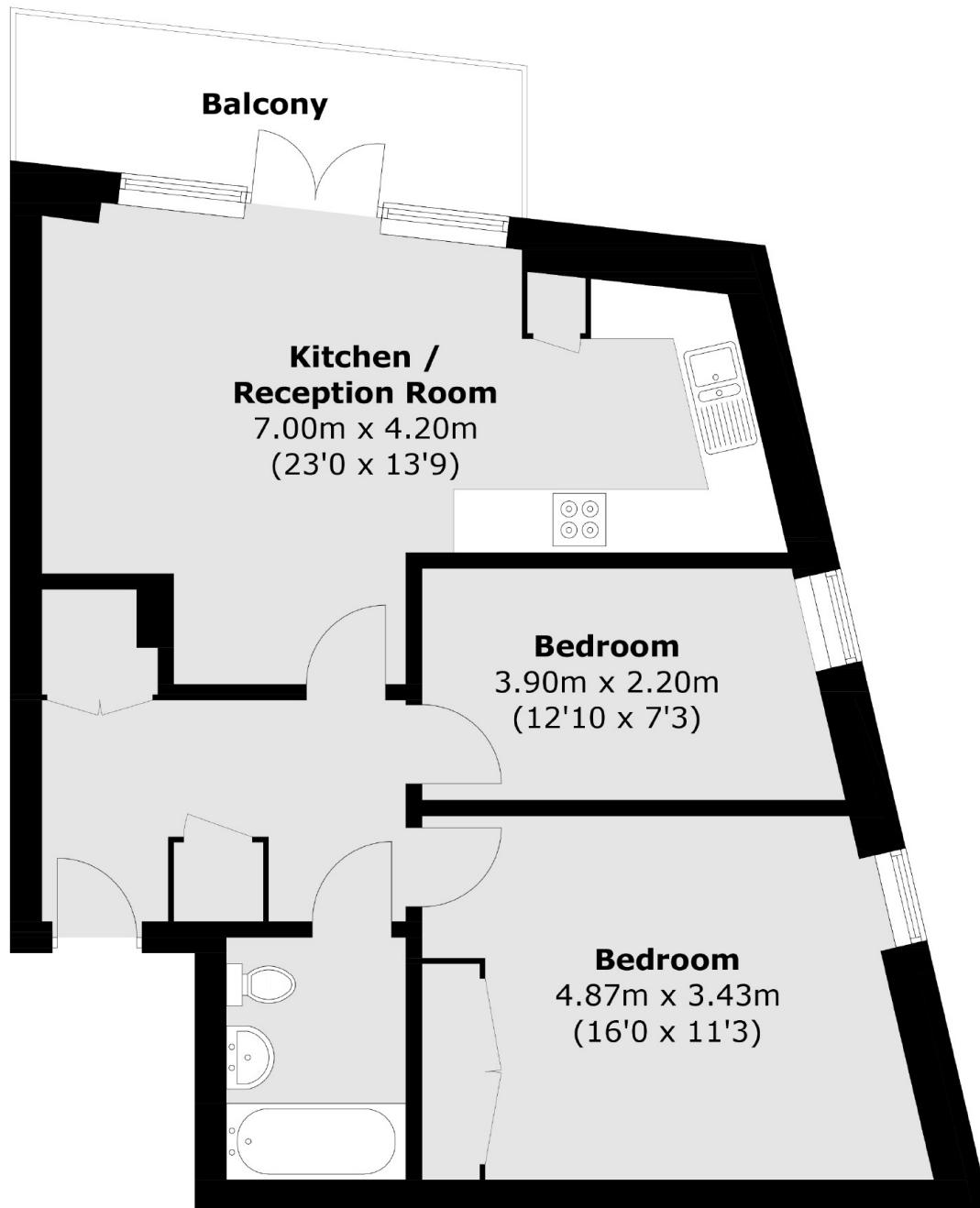
A spacious two double bedroom apartment in Fondant Court. This property has floor to ceiling windows allowing an abundance of natural light throughout that lead onto a balcony and an on site concierge.

Central location within easy reach of Bow, Stratford, Hackney Wick and Victoria Park for all local shops, restaurants and cafés.

Features

- Two Double Bedroom
- Modern Development
- Open Plan
- Balcony
- Concierge
- Furnished

Taylor Place, London, E3



Total area (approx.): 62.1 sq. m (668.4 sq. ft)
Balcony (approx.): 6.7 sq. m (72.1 sq. ft)

Dexters

Hackney
10 Broadway Market
London
E8 4QJ
Lettings
0207 247 2441

Energy Rating: C. We aim to make our particulars both accurate and reliable. However they are not guaranteed; nor do they form part of an offer or contract. If you require clarification on any points then please contact us, especially if you're traveling some distance to view. Please note that appliances and heating systems have not been tested and therefore no warranties can be given as to their good working order.

 **RICS** | Regulated
Estate Agent
and Letting Agent

[dexters.co.uk](https://www.dexters.co.uk)