



Victoria Park Road, E9

£2,000,000

Dexters



Victoria Park Road, E9

A four double bedroom Victorian freehold house measuring in excess of 1950 square feet. This family home has been lovingly maintained by the current owners, is laid out over four stories and comes with a west facing garden. This house is being sold chain free.

At lower ground level there is an open plan kitchen, living area and dining space. The kitchen has integrated appliances, oversized Island with stainless steel work surface and engineered oak flooring. On this floor there is also a laundry room with washer and dryer, WC and concertina doors out into the garden.

On the raised ground floor there are high ceilings and dual aspect living room with feature fireplace and work area. To the rear of the house there is a modern family bathroom. The level has varnished and painted wooden floorboards, sash windows and decorative cornicing.

On the second floor is the principle bedroom with full en-suite, walk in shower and his and hers sinks. There is an abundance of bespoke built in storage, sash windows with a dual aspect and a separate family bathroom on a half-landing. The top floor is comprised of three double bedrooms, two of which are set up as children's rooms, one of which has a mezzanine floor with built in storage. All bedrooms have original wooden flooring, decorative sash windows.

Features

Four Double Bedrooms

Three Bathrooms

Wooden Flooring

Period Features

West Facing Garden

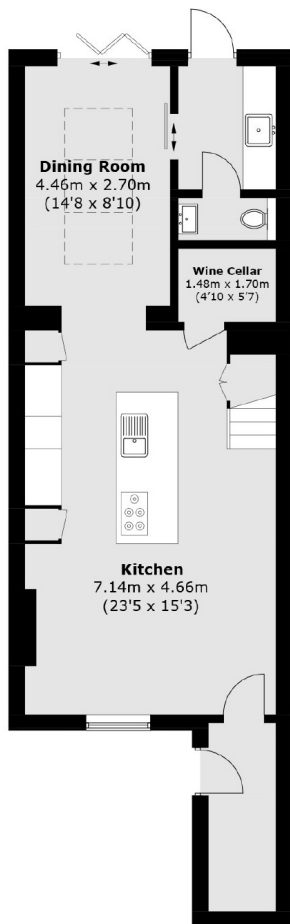
Climate-controlled Wine Store



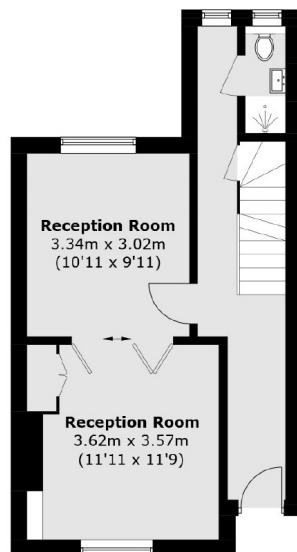




Victoria Park Road, London, E9



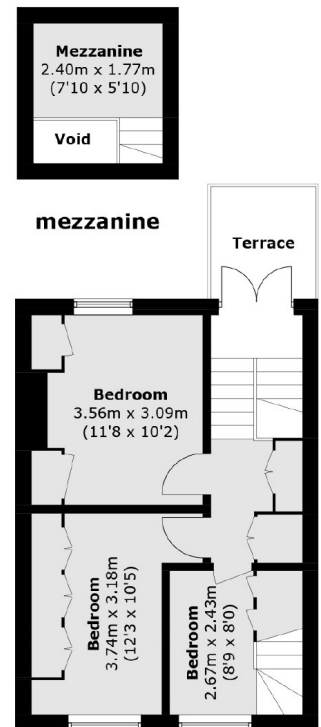
Lower Ground Floor



Raised Ground Floor



First Floor



Second Floor

Total area (approx.): 181.5 sq. m (1,953.5 sq. ft)
(Excluding Void)
Terrace: 4.1 sq. m (44.1 sq. ft)