



Talwin Street, E3

£375,000

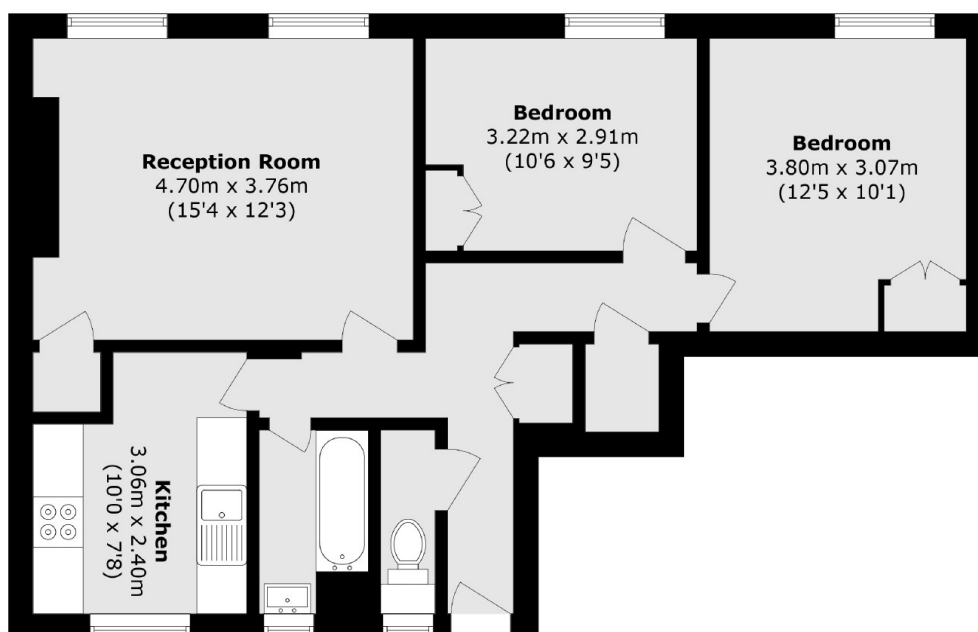
A two double bedroom flat which has been well maintained by it's current owner measuring in excess of 653 sq ft. The flat has two generous double bedrooms, ample storage and separate kitchen and living/dining rooms.

Chagford House is located within close proximity to Bromley-by-Bow station (0.2m) and Devons Road DLR (0.3m) with great connections into the city and Canary Wharf.

Features

- Two double bedrooms
- Parking Available
- Communal Gardens
- Bromley-by-Bow
- Chain Free

Talwin Street, London, E3



Total area (approx.): 60.7 sq. m (653.4 sq. ft)