

## King Edward's Road, E9

£657 Per calendar month

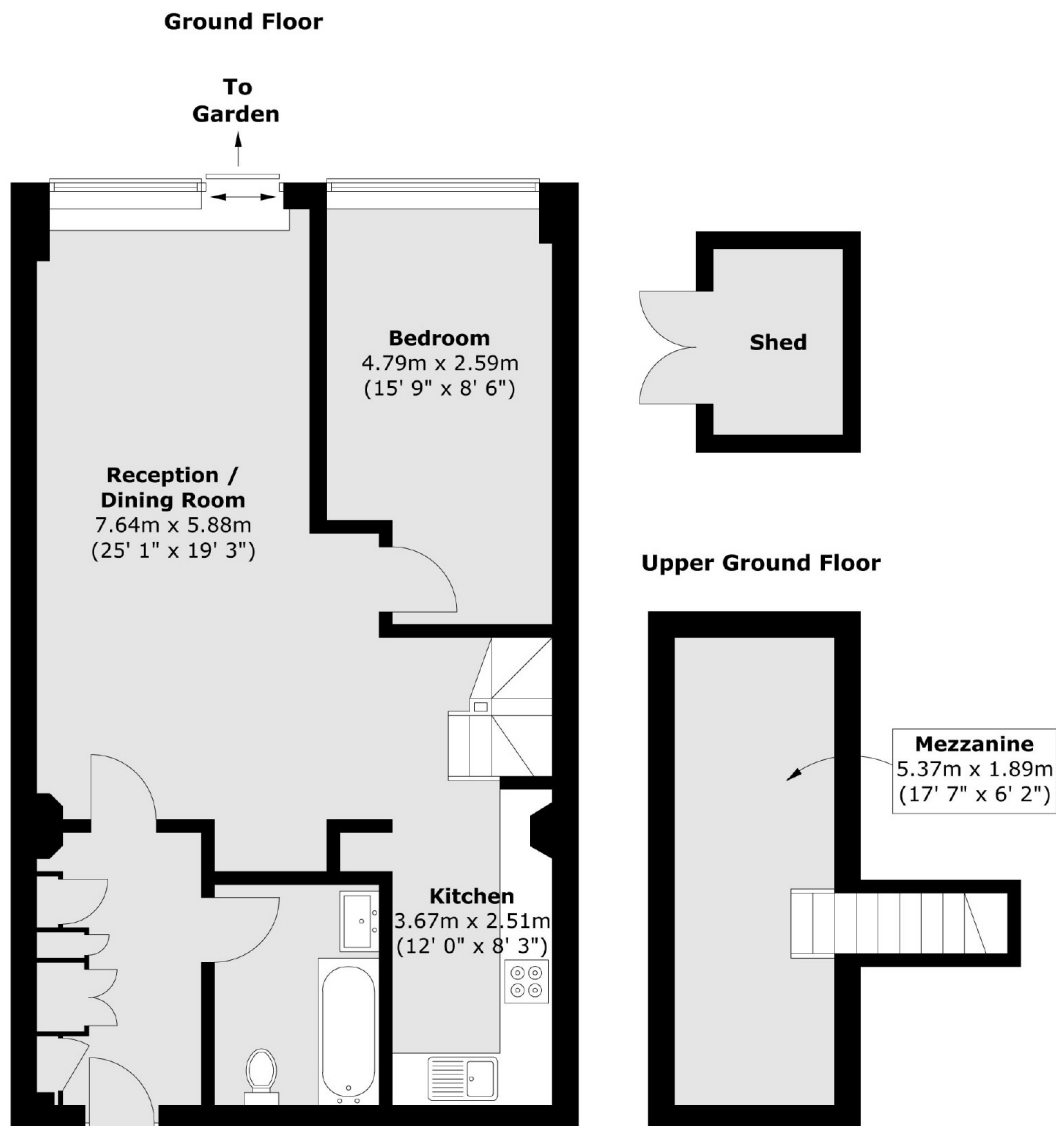
A beautifully presented converted warehouse apartment on the ever popular King Edward's Road development. This unique property has open plan living space, mezzanine office/study Area, high ceilings and private garden.

Perfect location just off Mare Street within easy reach of London Fields, Broadway Market and Victoria Park Village, close to all local shops, cafés and restaurants.

### Features

- One Double Bedroom
- Warehouse Conversion
- New Kitchen
- Unfurnished
- Mezzanine Office/Study
- Private Garden

# King Edward's Road, London, E9



Total area (approx.) : 73.3 sq. m (789 sq. ft)  
Total shed area (approx.) : 3.2 sq. m (34 sq. ft)