



Remus Road, E3

£450,000

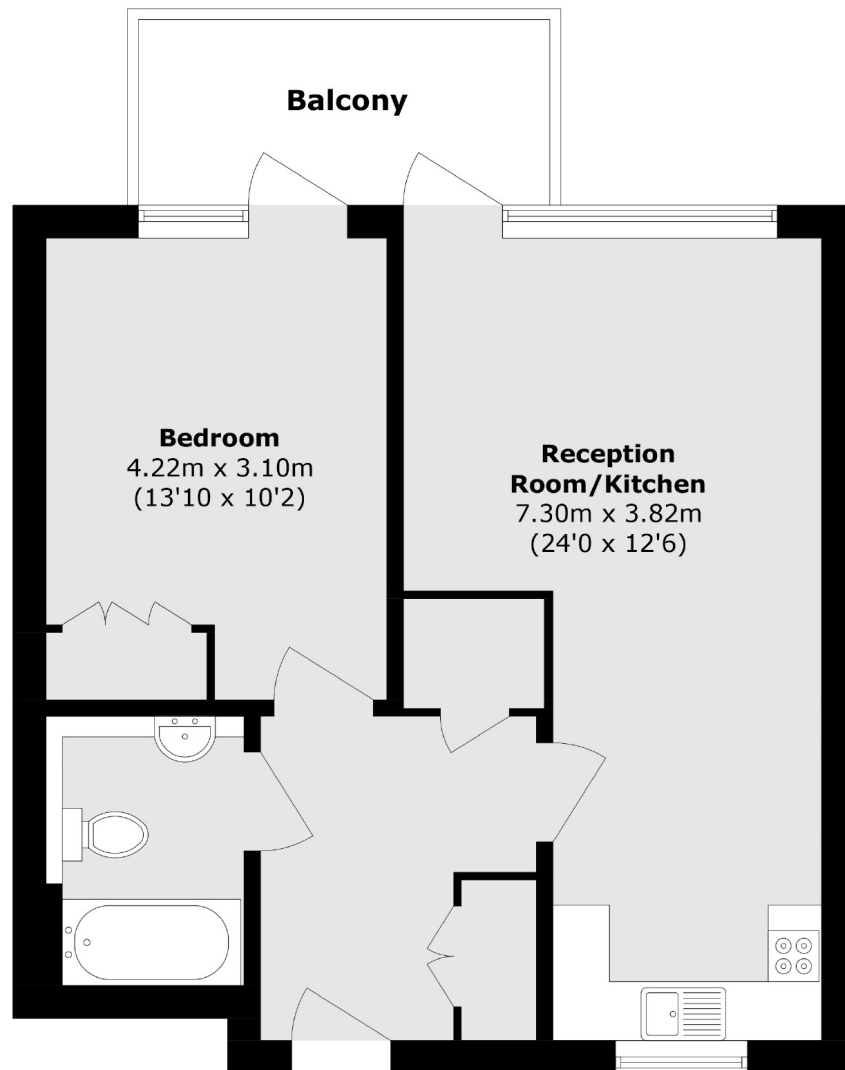
A bright one bedroom apartment located on the third floor of this modern apartment block measuring in excess of 543 SQ.FT. The property features floor to ceiling windows, large private balcony accessed via the main reception and bedroom, and a fully integrated open plan kitchen/living space. This development benefits from a communal roof terrace and bike storage.

The property is located in Fish Island Village, a short walk from the green parks of Queen Elizabeth Olympic Park and Victoria Park. There is abundance of cafes, bars and shops on your doorstep with Hackney Wick overground station a quarter of a mile away. Westfield Shopping centre is half a mile walk.

Features

- Modern Development
- Private Balcony
- Communal Roof Terrace
- Bike Storage
- Fish Island Village
- Hackney Wick
- Sonos speakers integrated to ceiling

Remus Road, London, E3



Total area (approx.): 50.5 sq. m (543.5 sq. ft)

Balcony area (approx.): 6.3 sq. m (67.8 sq. ft)

Dexters

Hackney
10 Broadway Market
London
E8 4QJ
Sales
0207 247 2440

Energy Rating: . We aim to make our particulars both accurate and reliable. However they are not guaranteed; nor do they form part of an offer or contract. If you require clarification on any points then please contact us, especially if you're traveling some distance to view. Please note that appliances and heating systems have not been tested and therefore no warranties can be given as to their good working order.

 **RICS** | Regulated
Estate Agent
and Letting Agent

[dexters.co.uk](https://www.dexters.co.uk)