



## Shore Road, E9

### £800,000

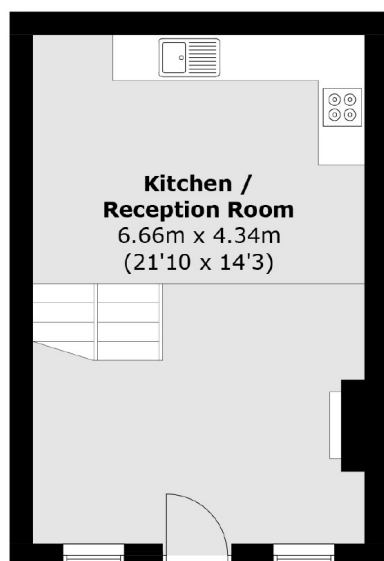
A three-storey maisonette in a quiet gated mews located between London Fields and Victoria Park measuring in excess of 1,000 sqft. The property has a split level open plan living area on the ground floor, a double bedroom and family bathroom as well as a study area on the first floor and the top floor consists of the main bedroom with a large bathroom. The property also features a patio out the front.

Positioned between Victoria Park and London Fields greeneries both with its endless bars, restaurants and cafes. Transport links include London Fields Station and Hackney Central both less than half a mile away.

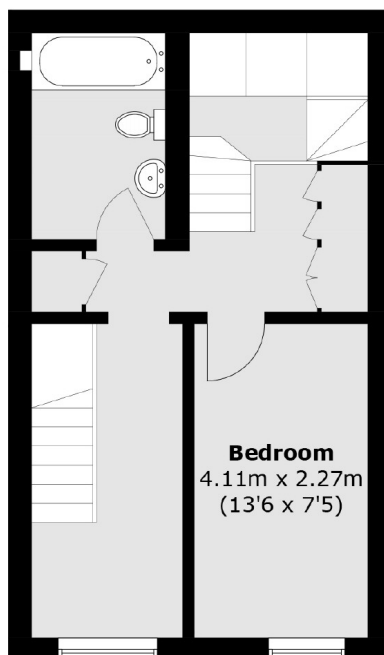
### Features

- Gated Mews
- Three storeys
- Two double bedrooms
- Patio
- Victoria Park
- London Fields

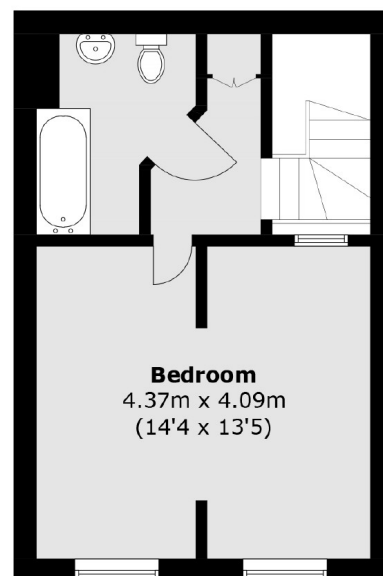
# Shore Road, London, E9



**Ground Floor**



**First Floor**



**Second Floor**

Total area (approx.): 93.8 sq. m (1,009.6 sq. ft)