



Morville Street, E3

£450,000

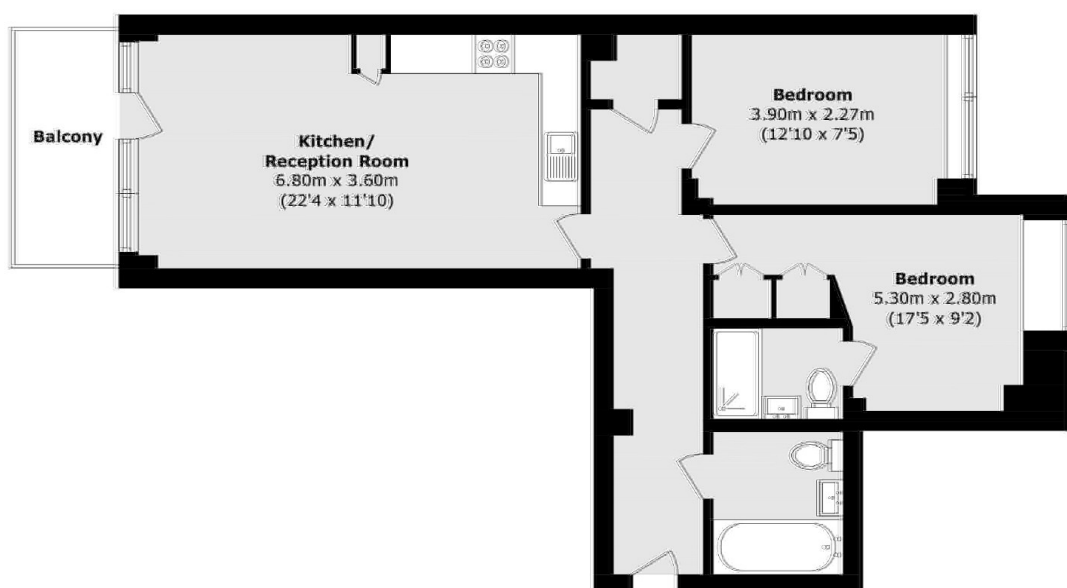
Located on the second floor of a modern development in the heart of Bow is this two bedroom apartment with a south east facing terrace. The property features a well-proportioned lounge/diner and open plan kitchen with integrated appliances including a wine cooler. The apartment also benefits from a contemporary bathroom, engineered wooden flooring and ample storage.

Well situated for excellent transport links, the flat is moments from Bow Road (District and Hammersmith & City Lines) and Bow Church DLR, offering access to Canary Wharf, the City and Stratford. Victoria Park, the Queen Elizabeth Olympic Park and the canal paths are all nearby, making this a great lifestyle location with green spaces, cafes and amenities within easy reach.

Features

- Two Double Bedrooms
- Modern
- Secure Development
- Open Plan
- Balcony
- Two Bathrooms

Morville Street, London, E3



Total area (approx.): 72.8 sq. m (783.6 sq. ft)

Balcony area (approx.): 5.7 sq. m (61.3 sq. ft)