



## Livermere Road, E8

### £325,000

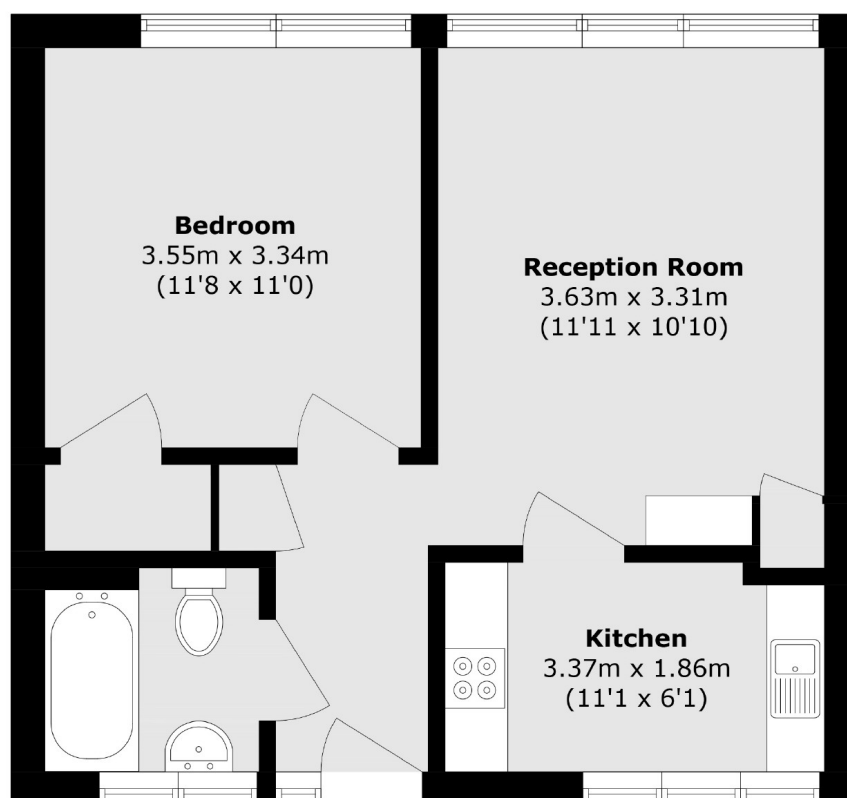
A one double bedroom apartment located within a secure purpose build block. This property has a semi open plan living and kitchen area with space for dining and is being offered chain free.

Hillborough court is located a quarter of a mile from Haggerston over ground station. There is a selection of shops and restaurants on your doorstep in Haggerston as well as Kingsland road and its plethora of cafes, shops and bars.

### Features

- One Double Bedroom
- Semi Open Plan
- Chain Free
- Close to Station
- Secure Access

# Livermere Road, London, E8



Total area (approx.): 44.4 sq. m (477.9 sq. ft)