



Roach Road, E3

£950,000

Dexters



Roach Road, E3

A three double bedroom, two bathroom apartment situated within a secure canal-side development. This property measures in excess of 1560 square feet, with Floor to ceiling glass windows, double height ceilings and mezzanine floor. There is an open plan living and kitchen complete with Island and polished concrete floors. This property is being offered chain free.

Omega works is situated on the corner of the Hertford Union Canal and the Lea Canal in the Hackney Wick area. This development has an abundance of Popular eateries, cafés and bars on its doorstep. The closest station is Hackney Wick on the overground offering great transport to the rest of north and east London.

Features

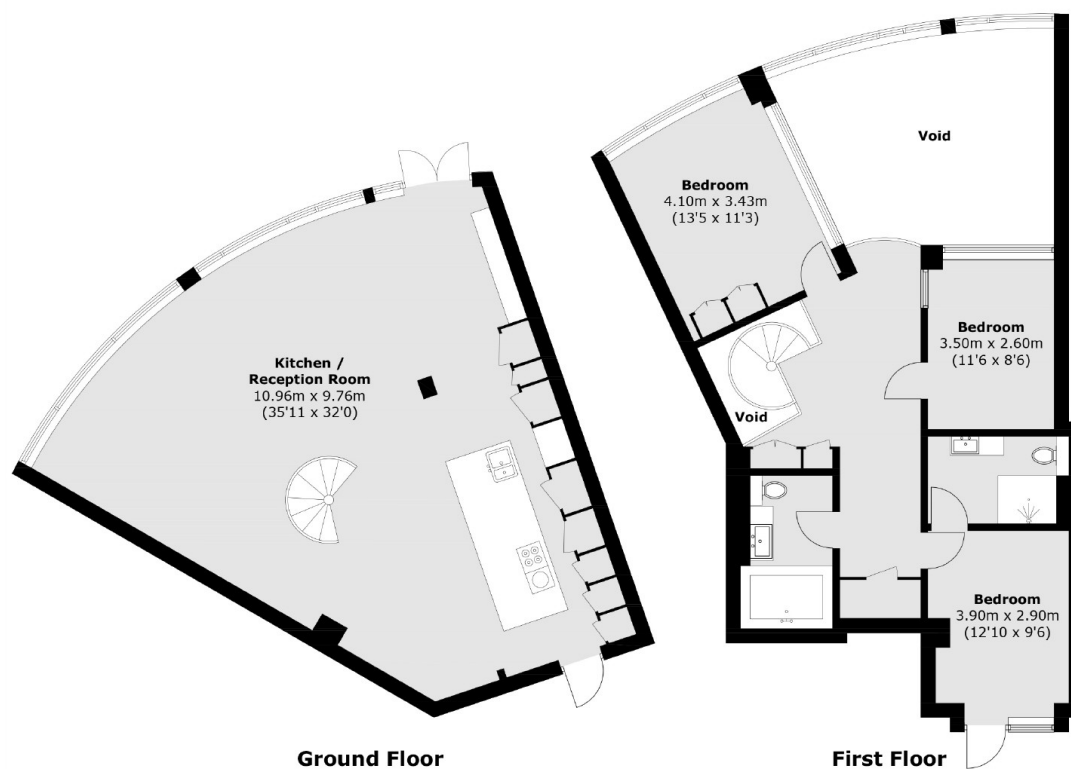
- Three Double Bedrooms
- Open Plan
- Chain Free
- Canal Side Location
- Modern
- Double Height Ceilings







Roach Road, London, E3



Total area (approx.): 145.7 sq. m (1,568.3 sq. ft)
(Excluding Void)

Dexters

Hackney
10 Broadway Market
London
E8 4QJ
Sales
0207 247 2440

Energy Rating: D. We aim to make our particulars both accurate and reliable. However they are not guaranteed; nor do they form part of an offer or contract. If you require clarification on any points then please contact us, especially if you're traveling some distance to view. Please note that appliances and heating systems have not been tested and therefore no warranties can be given as to their good working order.

 **RICS** | Regulated
Estate Agent
and Letting Agent

[dexters.co.uk](https://www.dexters.co.uk)