



Queensbridge Road, E2

£800,000

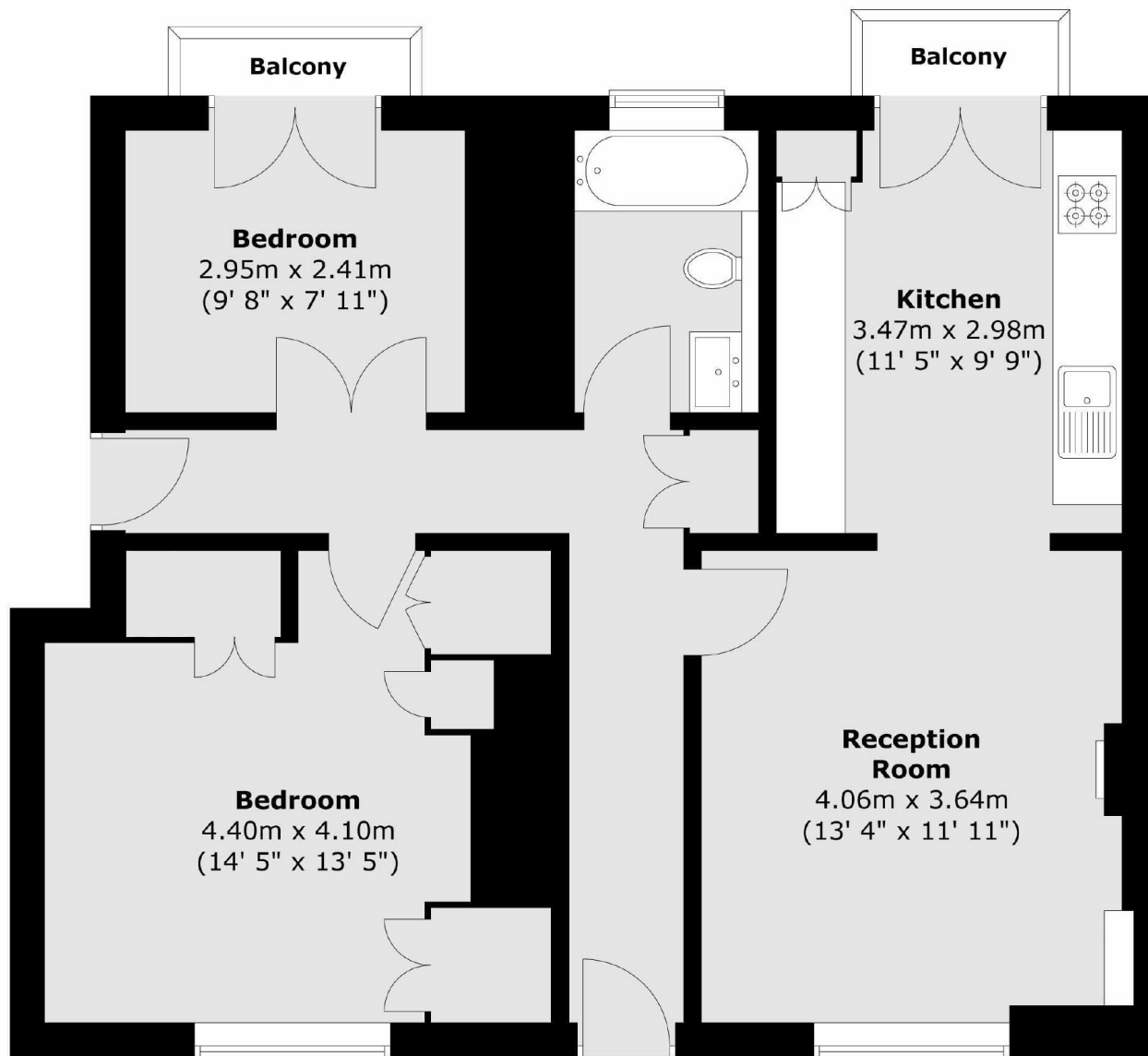
A renovated two-double bedroom period flat with private front door access, designed by an award-winning interior architect. Features a bright semi open-plan living room and bespoke kitchen with custom banquette, a spacious main bedroom with ample storage, and a smaller double with French doors overlooking a communal garden. High-spec finishes include engineered oak flooring, encaustic and terrazzo tiles, composite stone worktops, sash windows, and French doors.

Moments from Haggerston Park and the vibrant Columbia Road Flower Market, with an array of popular restaurants, cafés, markets, and shops nearby. Excellent transport links to Windrush, Central, and Northern lines, all within walking distance.

Features

- Two double bedrooms
- Period
- Private entrance
- Communal Gardens
- Interior designed
- Lateral

Queensbridge Road, London, E2



Total area (approx.) : 66 sq. m (710 sq. ft)
Total balcony area (approx.) : 2.1 sq. m (23 sq. ft)