



High Street, E15

£403 Per week

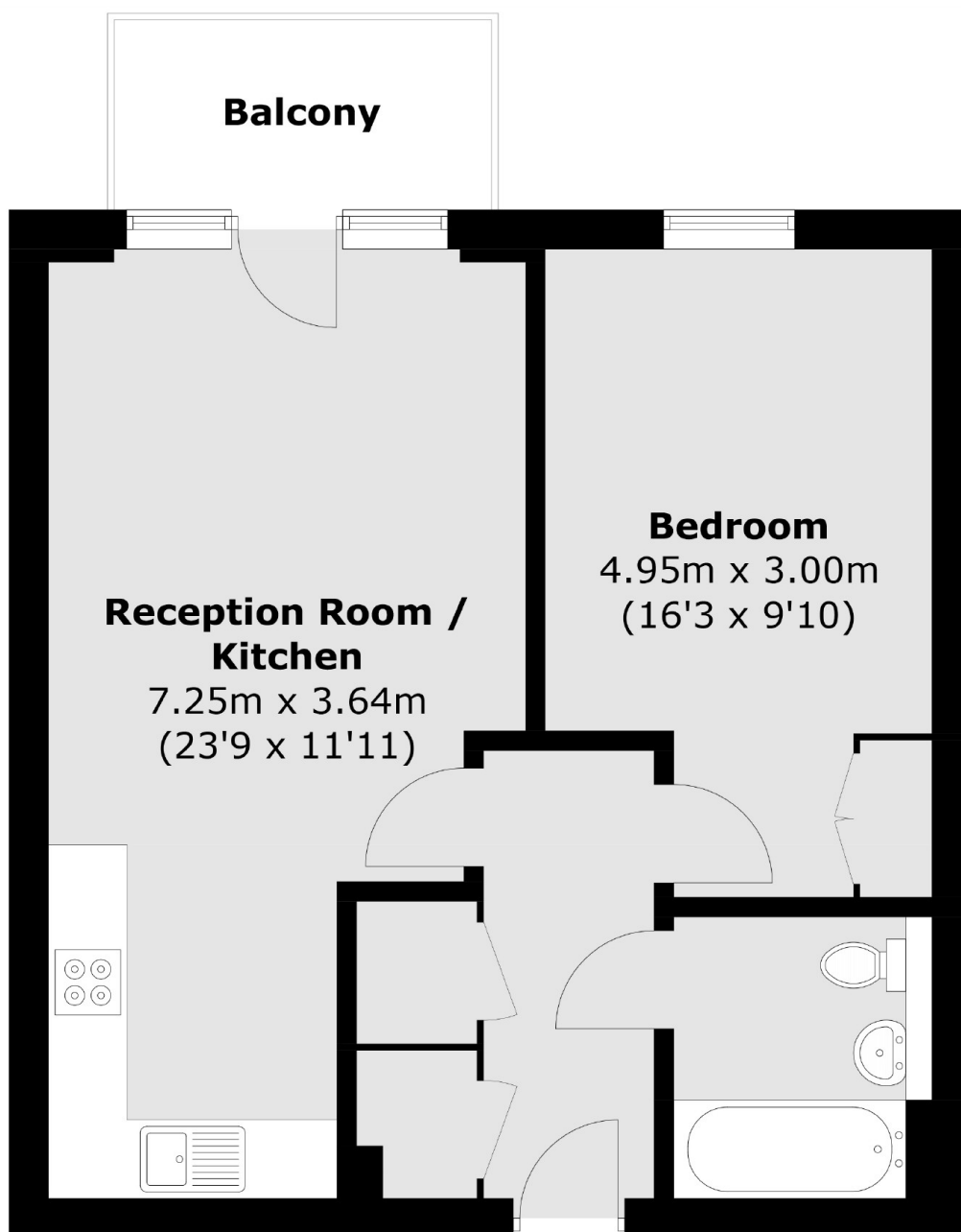
A large one double bedroom apartment in John Wetherby Court. This property comes with an open plan reception, floor to ceiling windows and large private balcony overlooking looking the communal gardens and canal.

Amazing location close to Westfield Shopping Centre and Stratford international station.

Features

- One Double Bedroom
- Open Plan
- Wooden Flooring
- Private Balcony
- Concierge
- 5th Floor

High Street, London, E15



Total area (approx.): 49.1 sq. m (528.5 sq. ft)
Balcony area (approx.): 4.2 sq. m (45.2 sq. ft)

Dexters

Hackney
10 Broadway Market
London
E8 4QJ
Lettings
0207 247 2441

Energy Rating: B. We aim to make our particulars both accurate and reliable. However they are not guaranteed; nor do they form part of an offer or contract. If you require clarification on any points then please contact us, especially if you're traveling some distance to view. Please note that appliances and heating systems have not been tested and therefore no warranties can be given as to their good working order.

 **RICS** | Regulated
Estate Agent
and Letting Agent

[dexters.co.uk](https://www.dexters.co.uk)