



Gore Road, E9

£450,000

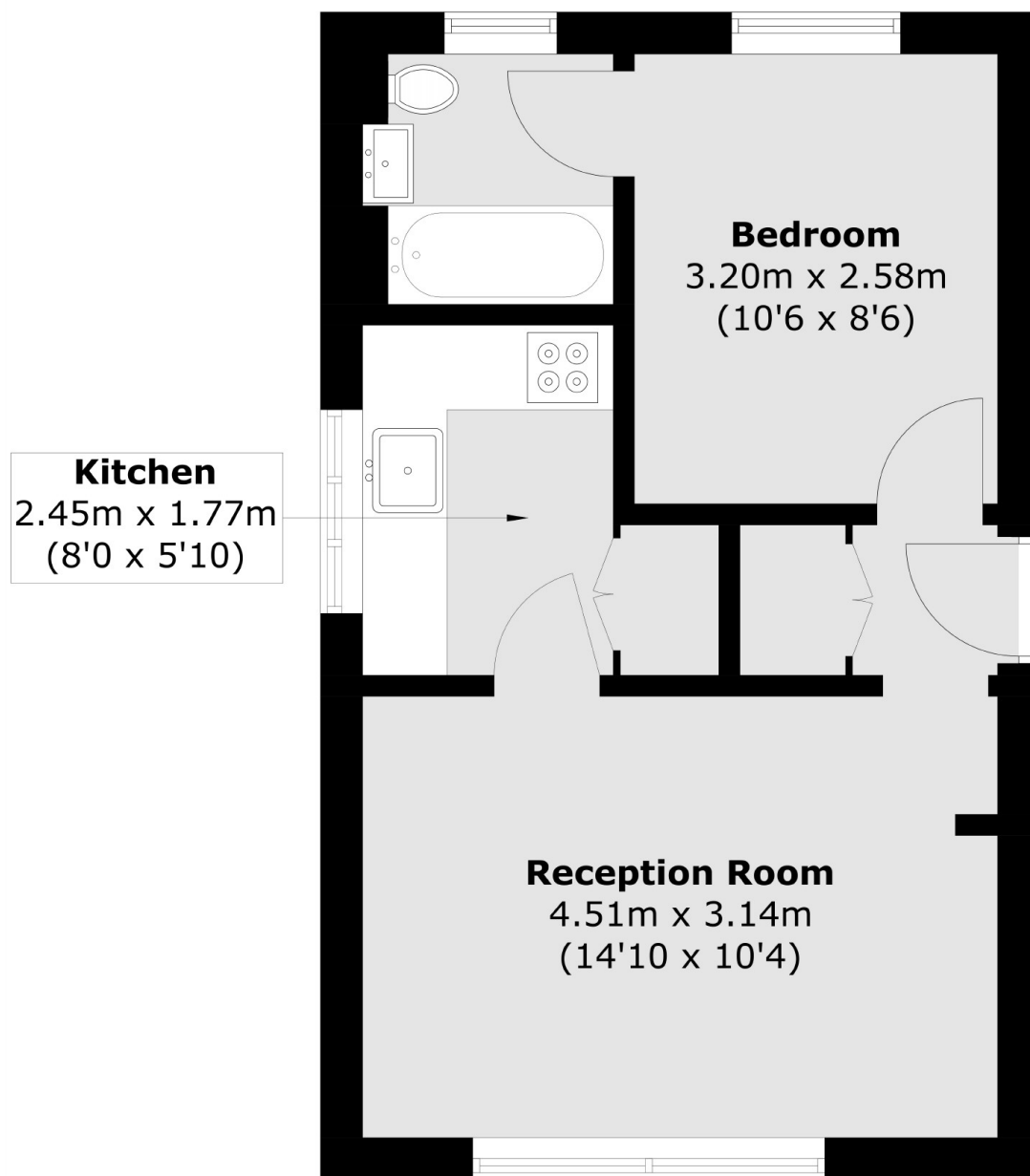
This one double bedroom flat offers a practical layout with a separate kitchen, park views and underfloor heating. It has been well maintained by the current owner making it ready to move in.

Located close to Victoria Park, the area provides easy access to green space and local amenities. Gore Road is nearby to London Fields and Cambridge Heath stations, providing quick links to central London.

Features

- One Double Bedroom
- Separate Kitchen
- Turn Key Condition
- Underfloor Heating
- Victoria Park

Gore Road, London, E9



Total area (approx.): 34.9 sq. m (375.7 sq. ft)